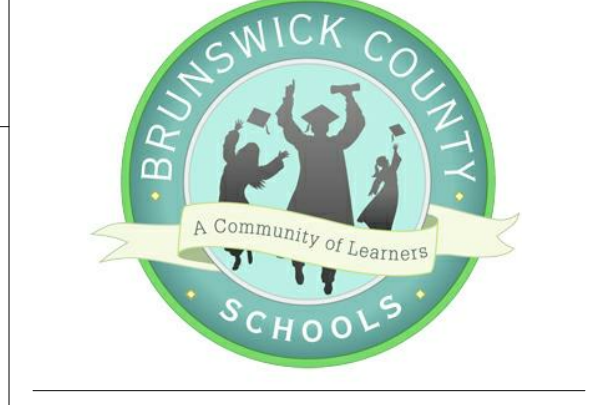
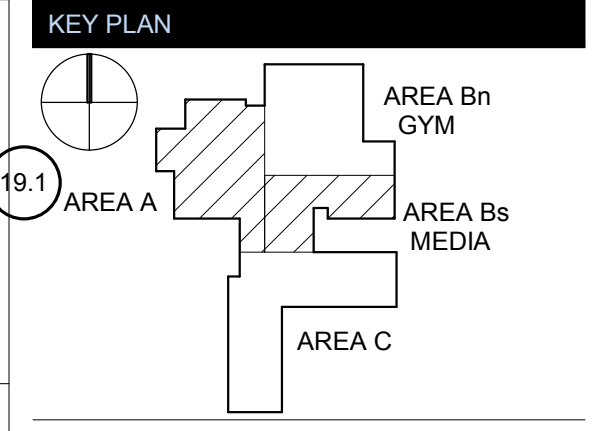


**ARCHITECT**  
**ksqdesign**  
 NEW YORK OKLAHOMA NORTH CAROLINA  
 TEXAS COLORADO SOUTH CAROLINA  
 KSQ Design  
 1930 CAMDEN ROAD, SUITE 260  
 CHARLOTTE, NC 28203  
 704.364.3400 office  
 704.364.7590 fax  
 www.ksqdesign.com  
**Owner**  
**BRUNSWICK COUNTY SCHOOLS**  
 199 SESSIONS DRIVE  
 BOYLINA, NC 28422  
 910.253.2500 office  
 www.bcswan.net  
**Civil Engineer**  
 MCGILL ASSOCIATES  
 712 VILLAGE ROAD SW, SUITE 103  
 SHALLOTTE, NC 28470  
 910.755.5872 office  
 www.mcgillengineer.com  
**Structural Engineer**  
 CRISER, TROUTMAN, TANNER  
 3809 PEACHTREE AVE., SUITE 102  
 WILMINGTON, NC 28403  
 910.397.2971 office  
 www.ctengineering.com  
**MEP Engineer**  
 KSO DESIGN  
 1930 CAMDEN ROAD, SUITE 260  
 CHARLOTTE, NC 28203  
 704.364.3400 office  
 www.ksqdesign.com  
**Electrical Consultant**  
 QUALITY CONSULTING ENGINEERS, PLLC  
 6277-600 CAROLINA COMMONS DRIVE,  
 #350 INDIAN LAND SC 29707  
 803.237.5450 office  
 djones@qualityconsultingengineers.com  
**Acoustic & Technology Consultant**  
 THORBURN ASSOCIATES  
 401 N. TYRON STREET, 10TH FLOOR  
 CHARLOTTE, NC 28202  
 510.886.7626 office  
 www.TA-inc.com  
**Building Envelope Consultant**  
 SKA ENGINEERING  
 7741 MARKET STREET, SUITE F  
 WILMINGTON, NC 28411-9444  
 910.442.2000 office  
 www.skaeng.com  
**Food Service Consultant**  
 HERBIN DESIGN  
 7325 DORN CIRCLE  
 CHARLOTTE, NC 28212-6914  
 704.900.0922  
 www.herbin.com



**TOWN CREEK MIDDLE SCHOOL**  
 6370 LAKE PARK DRIVE SE  
 WINNABOW, NC 28479



**REVISIONS**

No.	Description	Date
1	Addendum #1	6-7-2018
2	Addendum #2	6-19-2018

**ISSUED: CONSTRUCTION DOCUMENTS**  
**DATE:** 05/24/2018  
**SCALE:** 3" = 1'-0"  
**SHEET NAME:** EXTERIOR PLAN DETAILS

**SHEET NUMBER:**  
**A-514**