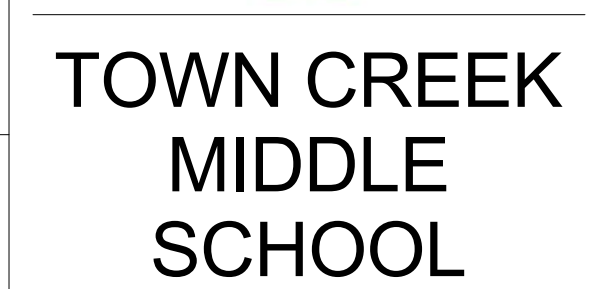


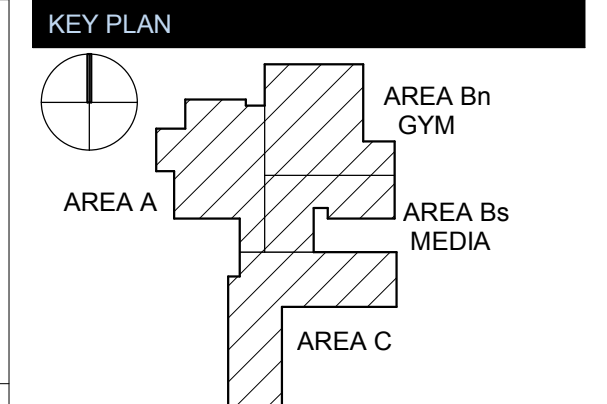
ROLLING COUNTER FIRE DOOR JAMB
1 1/2" = 1'-0" **F2**

ROLLING COUNTER FIRE DOOR SECTION
1 1/2" = 1'-0" **A2**

ARCHITECT
ksqdesign
NEW YORK OKLAHOMA NORTH CAROLINA
TEXAS COLORADO SOUTH CAROLINA
KSO Design
1930 CAMDEN ROAD, SUITE 260
CHARLOTTE, NC 28203
704.364.3400 office
704.364.7590 fax
www.ksqdesign.com
Owner
BRUNSWICK COUNTY SCHOOLS
199 SESSIONS DRIVE
BOULDER, NC 28422
910.253.2500 office
www.bcswn.net
Civil Engineer
MCGILL ASSOCIATES
712 VILLAGE ROAD SW, SUITE 103
SHALLOTTE, NC 28470
910.755.5872 office
www.mcgillengineer.com
Structural Engineer
CRISER, TROUTMAN, TANNER
3809 PEACHTREE AVE., SUITE 102
WILMINGTON, NC 28403
910.397.2971 office
www.ctengineering.com
MEP Engineer
KSO DESIGN
1930 CAMDEN ROAD, SUITE 260
CHARLOTTE, NC 28203
704.364.3400 office
www.ksqdesign.com
Electrical Consultant
QUALITY CONSULTING ENGINEERS, PLLC
6277-600 CAROLINA COMMONS DRIVE,
#350 INDIAN LAND SC 29707
803.237.5450 office
djones@qualityconsultingengineers.com
Acoustic & Technology Consultant
THORBURN ASSOCIATES
401 N. TYRON STREET, 10TH FLOOR
CHARLOTTE, NC 28202
510.886.7826 office
www.TA-inc.com
Building Envelope Consultant
SKA ENGINEERING
7741 MARKET STREET, SUITE F
WILMINGTON, NC 28411-9444
910.442.2000 office
www.skaeng.com
Food Service Consultant
HERBIN DESIGN
7525 DORN CIRCLE
CHARLOTTE, NC 28212-6914
704.900.0922
www.herbin.com



TOWN CREEK MIDDLE SCHOOL
6370 LAKE PARK DRIVE SE
WINNABOW, NC 28479



REVISIONS

No.	Description	Date
1	Addendum #1	6-7-2018
2	Addendum #2	6-19-2018

ISSUED: CONSTRUCTION DOCUMENTS
DATE: 05/24/2018
SCALE: 1 1/2" = 1'-0"
SHEET NAME: DOOR DETAILS
SHEET NUMBER:

A-612