



TOWN CREEK MIDDLE SCHOOL

6370 LAKE PARK DRIVE SE WINNABOW, NC 28479



REVISIONS table with columns for No., Description, and Date.

ISSUED: CONSTRUCTION DOCUMENTS DATE: 05/24/2018 SCALE: 1/16" = 1'-0" SHEET NAME: SHEET INDEX AND NOTES SHEET NUMBER:

TELECOMMUNICATIONS table listing abbreviations like 110, ADF, BDC, etc.

MEASUREMENTS table listing abbreviations like BTU, D or Dp, DA, etc.

ELECTRICAL table listing abbreviations like A or amp, BND, C, etc.

GENERAL table listing abbreviations like (a)(e), (a)(n), ABV, etc.

ABBREVIATIONS

DIRECTIONAL table listing abbreviations like DN, E, HORIZ, etc.

COLOR CODE table listing abbreviations like A, B, C, etc.

WIRE AND CABLE table listing abbreviations like AFNW, ARMW, AWG, etc.

WIRE AND CABLE table listing abbreviations like AFNW, ARMW, AWG, etc.

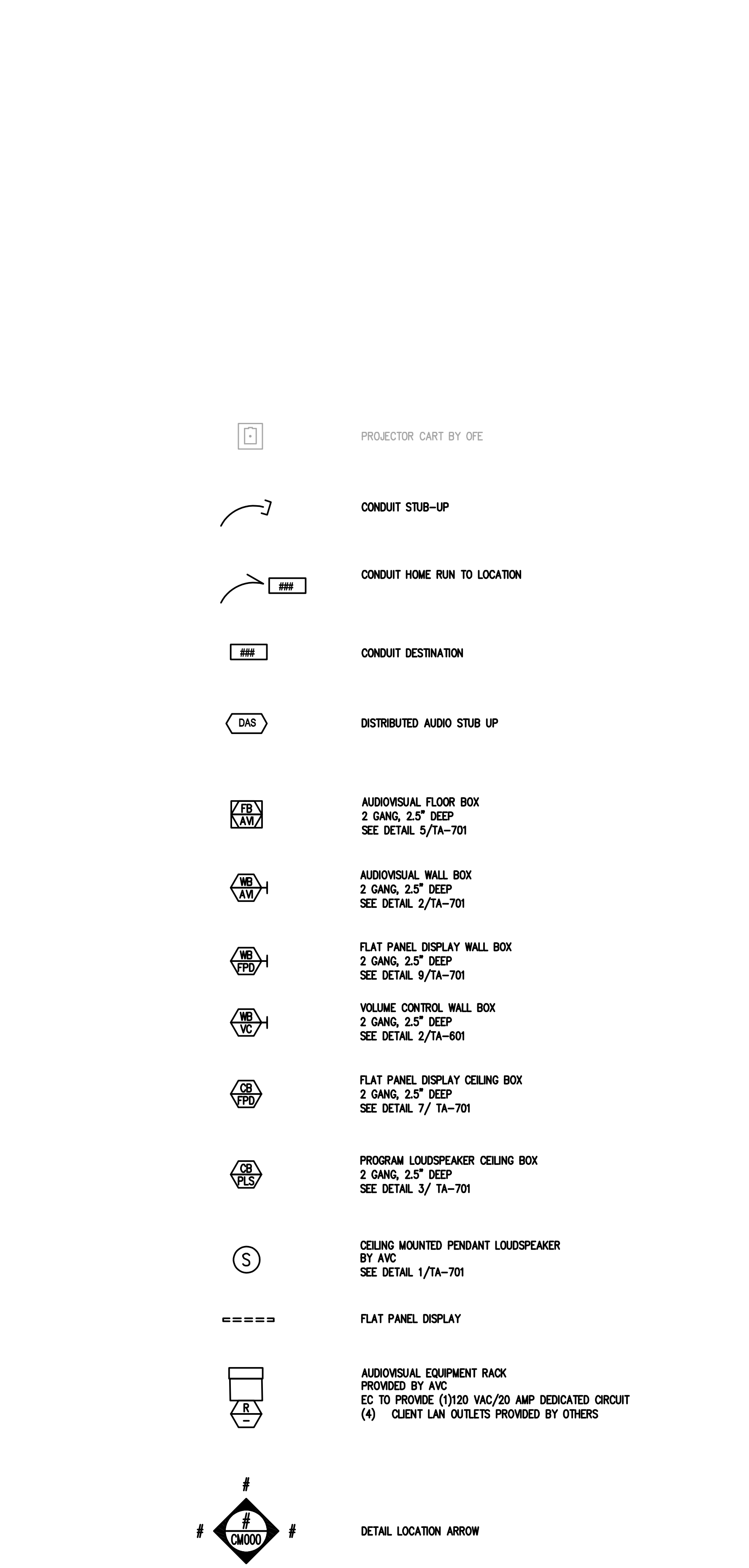
PROJECT NOTES

- 1. PATCH CABLES - DEDICATED NETWORK PATCH CABLES FOR THE AV NETWORK SHALL BE YELLOW. DEDICATED NETWORK PATCH CABLES FOR THE CONTROL NETWORK SHALL BE BLUE. DATA JACKS SHALL MATCH PATCH CABLE COLOR.
2. LOUSPEAKER CONNECTORS. ALL CONNECTIONS TO SCREW CLAMP OR BINDING POST TERMINALS REQUIRE APPROPRIATELY COLOR CODED FLANGED OR SNAP SPADE TYPE LUGS. BARE WIRE CONNECTED TO A BINDING POST IS NOT ACCEPTABLE. GAS TIGHT INSULATION DISPLACEMENT "PUNCH-DOWN BLOCKS" ARE ACCEPTABLE TERMINAL CONNECTIONS FOR MICROPHONE AND LINE LEVEL INTERCONNECTIONS WITHIN EQUIPMENT ENCLOSURES.

GENERAL NOTES

- 1. POWER: A EACH CIRCUIT THAT SERVES TECHNOLOGY SYSTEMS MUST HAVE A DEDICATED GROUND AND NEUTRAL CONDUCTOR. SHARED GROUNDS AND NEUTRALS ARE NOT ACCEPTABLE.
2. TECHNOLOGY CONVEYANCE SYSTEM: A CONDUITS WHICH CARRY POWER MUST BE SEPARATED FROM TECHNOLOGY CONDUITS BY 12 INCHES FOR VOLTAGES OVER 100 VAC, 24 INCHES FOR VOLTAGES OVER 200 VAC AND 48 INCHES FOR ALL VOLTAGES OVER 300 VAC.

PROJECT SYMBOLS

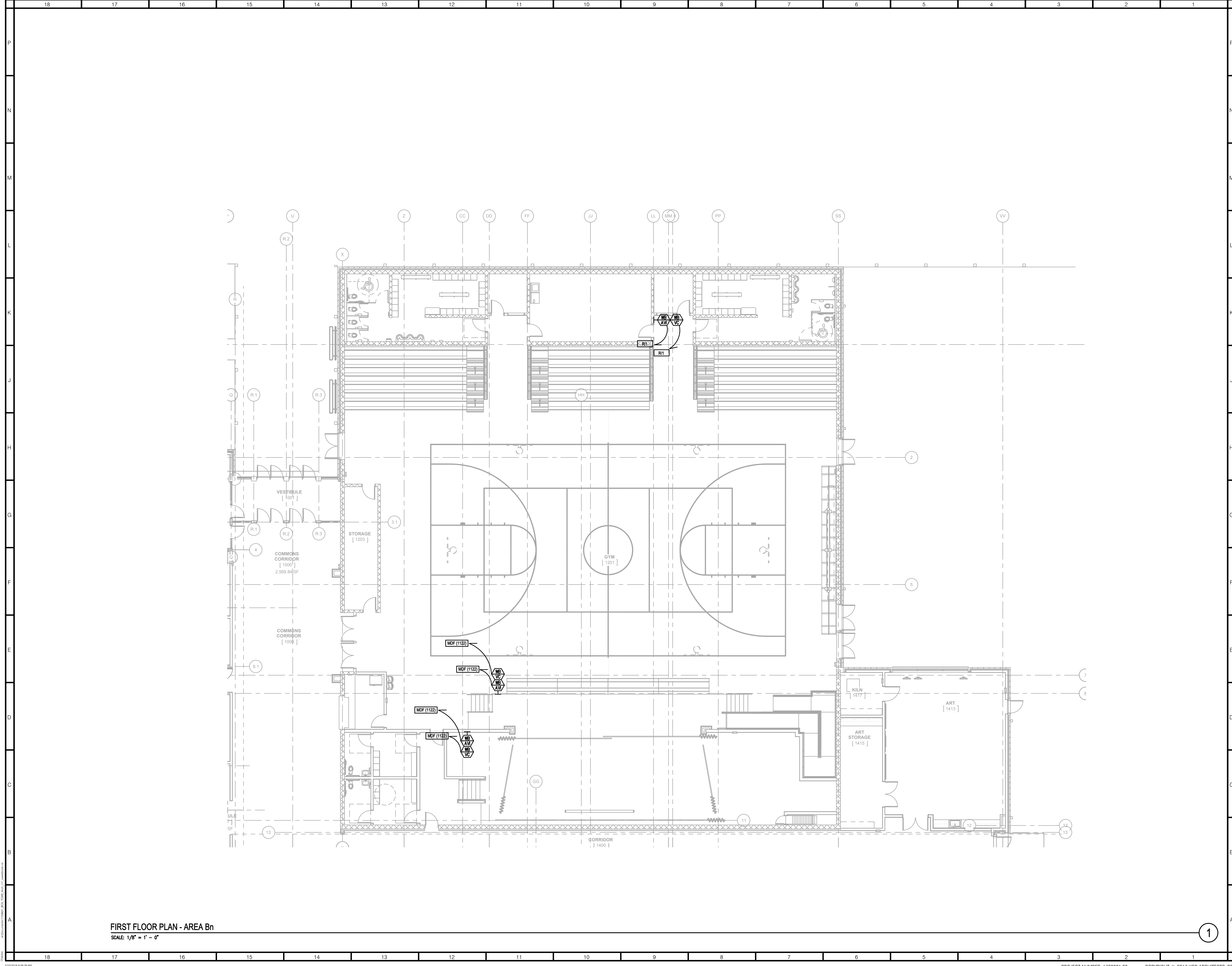


PROJECT SYMBOLS

SHEET INDEX

Table with columns for NUMBER, DRAWING NAME, and a grid of X's indicating sheet locations.

SHEET INDEX



FIRST FLOOR PLAN - AREA Bn
SCALE: 1/8" = 1' - 0"

1

ARCHITECT
ksqdesign
NEW YORK OKLAHOMA NORTH CAROLINA
TEXAS COLORADO SOUTH CAROLINA

KSQ Design
1930 CAMDEN ROAD, SUITE 260
CHARLOTTE, NC 28203
704.364.3400 office
704.364.7080 fax
www.ksqdesign.com

Owner
BRUNSWICK COUNTY SCHOOLS
199 SESSIONS DRIVE
BOLIVIA, NC 28422
910.253.2900 office
www.bcswan.net

Civil Engineer
McGILL ASSOCIATES
712 VILLAGE ROAD SW, SUITE 103
SHALLOTTE, NC 28470
910.755.5872 office
www.mcgillengineer.com

Structural Engineer
CRISER, TROUTMAN, TANNER
3809 PEACHTREE AVE., SUITE 102
WILMINGTON, NC 28403
910.397.2971 office
www.ctengineering.com

MEP Engineer
KSG DESIGN
1930 CAMDEN ROAD, SUITE 260
CHARLOTTE, NC 28203
704.364.3400 office
www.ksqdesign.com

Electrical Consultant
QUALITY CONSULTING ENGINEERS, PLLC
6277-600 CAROLINA COMMONS DRIVE,
#350 INDIAN LAND SC 29707
803.207.5450 office
qse@qualityconsultingengineers.com

Acoustic & Technology Consultant
THORBURN ASSOCIATES
401 N. TYRON STREET - 10TH FLOOR
CHARLOTTE, NC 28202
510.886.7826 office
www.TA-inc.com

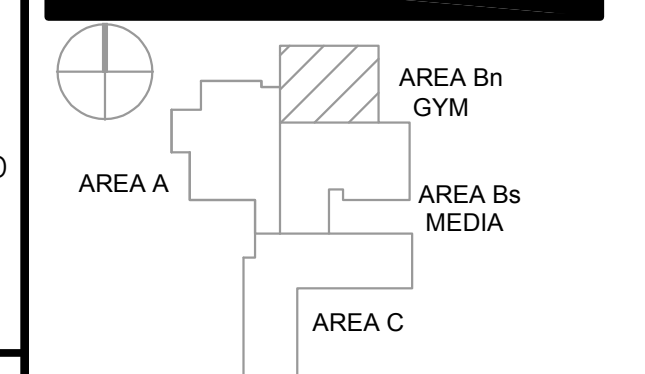
Building Envelope Consultant
SKA ENGINEERING
7741 MARKET STREET, SUITE F
WILMINGTON, NC 28411-9444
910.442.2000 office
www.skaeng.com

Food Service Consultant
HERBIN DESIGN
7325 DORN CIRCLE
CHARLOTTE, NC 28212-6914
704.900.0922
www.herbin.com



**TOWN CREEK
MIDDLE
SCHOOL**

6370 LAKE PARK DRIVE
SE
WINNABOW, NC 28479



REVISIONS

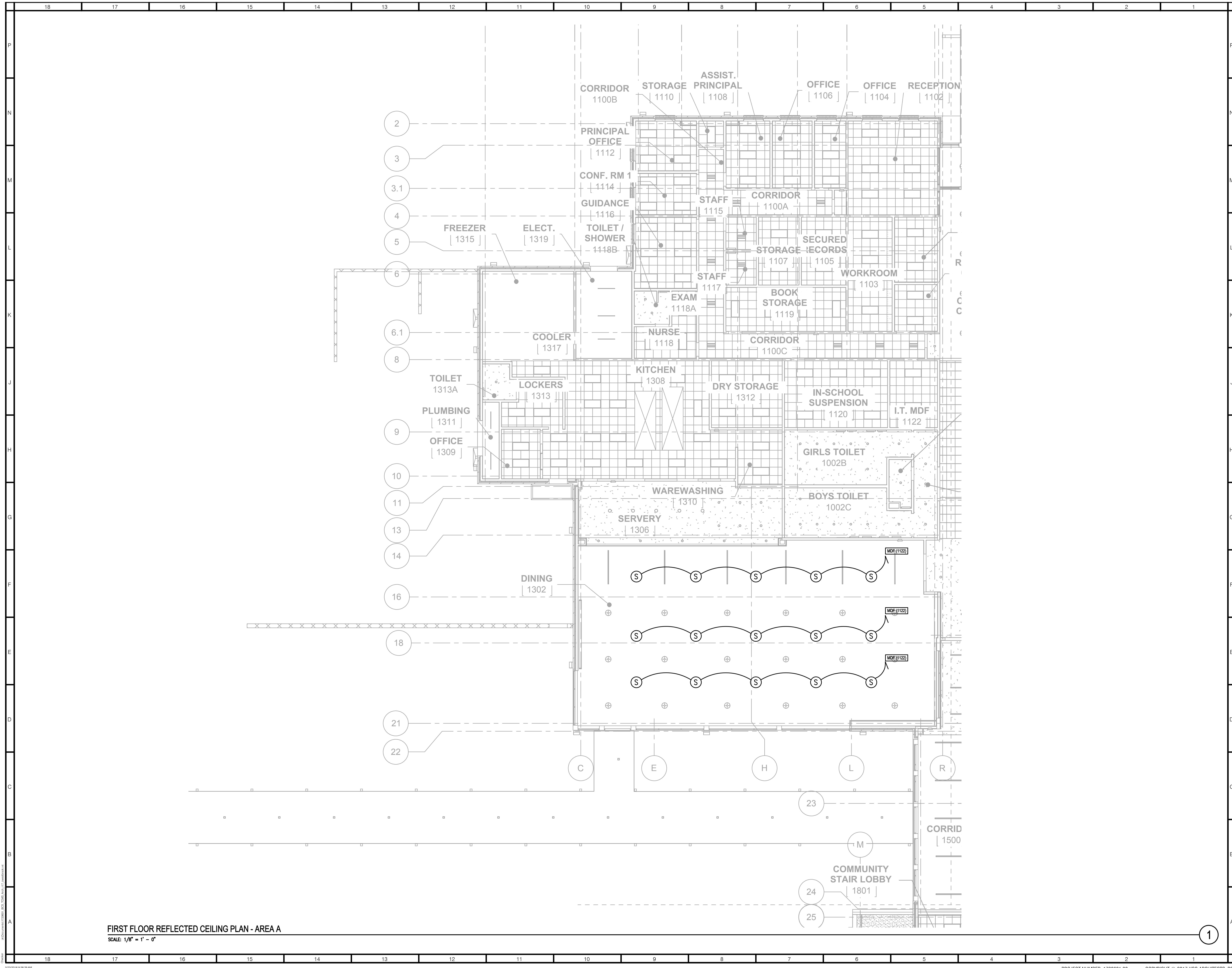
No.	Description	Date

ISSUED: CONSTRUCTION DOCUMENTS

DATE: 05/24/2018
SCALE: 1/16" = 1'-0"

SHEET NAME:
FIRST FLOOR PLAN - AREA Bn

SHEET NUMBER:
TA-101Bn



ARCHITECT
ksqdesign
 NEW YORK OKLAHOMA NORTH CAROLINA
 TEXAS COLORADO SOUTH CAROLINA

KSQ Design
 1930 CAMDEN ROAD, SUITE 260
 CHARLOTTE, NC 28203
 704.364.3400 office
 704.364.7080 fax
 www.ksqdesign.com

Owner
BRUNSWICK COUNTY SCHOOLS
 199 SESSIONS DRIVE
 BOLIVIA, NC 28422
 910.253.2900 office
 www.bcswh.net

Civil Engineer
 MCGILL ASSOCIATES
 712 VILLAGE ROAD SW, SUITE 103
 SHALLOTTE, NC 28470
 910.755.5872 office
 www.mcgillengineer.com

Structural Engineer
 CRISER, TROUTMAN, TANNER
 3809 PEACHTREE AVE., SUITE 102
 WILMINGTON, NC 28403
 910.397.2971 office
 www.ctengineering.com

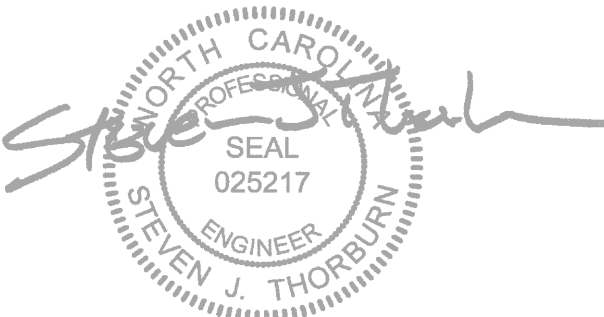
MEP Engineer
 KSQ DESIGN
 1930 CAMDEN ROAD, SUITE 260
 CHARLOTTE, NC 28203
 704.364.3400 office
 www.ksqdesign.com

Electrical Consultant
 QUALITY CONSULTING ENGINEERS, PLLC
 6277 693 CAROLINA COMMONS DRIVE,
 #350 INDIAN LAND SC 29707
 803.207.5450 office
 sjones@qualityconsultingengineers.com

Acoustic & Technology Consultant
 THORBURN ASSOCIATES
 401 N. TYRON STREET - 10TH FLOOR
 CHARLOTTE, NC 28202
 510.686.7826 office
 www.TA-inc.com

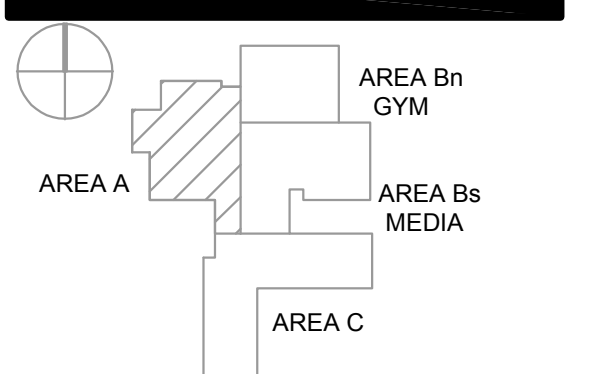
Building Envelope Consultant
 SKA ENGINEERING
 7741 MARKET STREET, SUITE F
 WILMINGTON, NC 28411-9444
 910.442.2000 office
 www.skaeng.com

Food Service Consultant
 HERBIN DESIGN
 7325 DORN CIRCLE
 CHARLOTTE, NC 28212-6914
 704.900.0922
 www.herbin.com



**TOWN CREEK
 MIDDLE
 SCHOOL**

6370 LAKE PARK DRIVE
 SE
 WINNABOW, NC 28479



REVISIONS

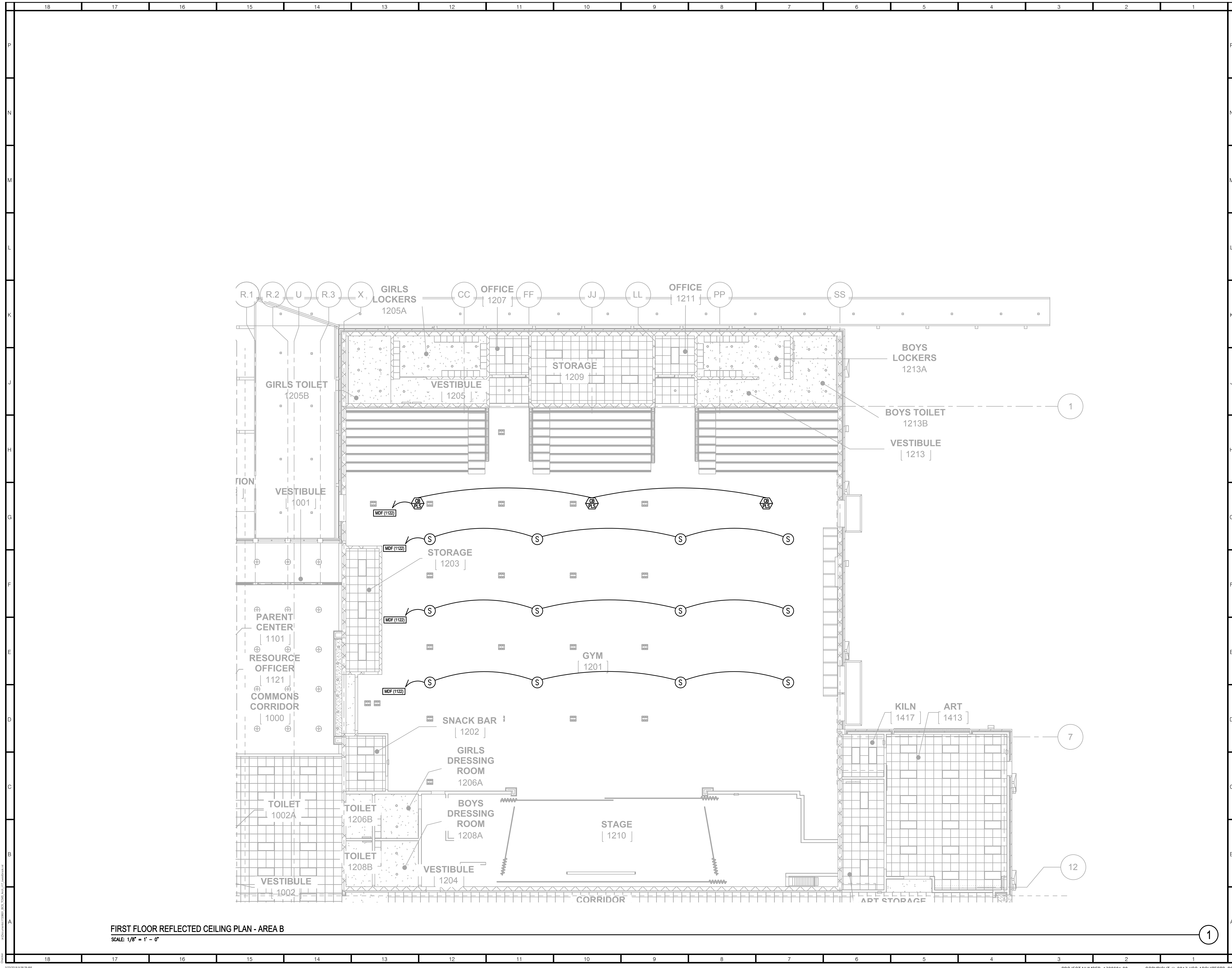
No.	Description	Date

ISSUED: CONSTRUCTION DOCUMENTS

DATE: 05/24/2018
SCALE: 1/16" = 1'-0"
SHEET NAME:
 FIRST FLOOR REFLECTED
 CEILING PLAN - AREA A
SHEET NUMBER:

TA-201A

DRAWN BY: A. ALY
 CHECKED BY: J. GARDNER
 DATE: 05/24/2018 9:18:29 AM



FIRST FLOOR REFLECTED CEILING PLAN - AREA B
SCALE: 1/8" = 1' - 0"

1

ARCHITECT
ksqdesign
NEW YORK OKLAHOMA NORTH CAROLINA
TEXAS COLORADO SOUTH CAROLINA

KSQ Design
1930 CAMDEN ROAD, SUITE 260
CHARLOTTE, NC 28203
704.364.3400 office
704.364.7080 fax
www.ksqdesign.com

Owner
BRUNSWICK COUNTY SCHOOLS
199 SESSIONS DRIVE
BOLIVIA, NC 28422
910.253.2900 office
www.bcsd.net

Civil Engineer
McGILL ASSOCIATES
712 VILLAGE ROAD SW, SUITE 103
SHALLOTTE, NC 28470
910.755.5872 office
www.mcgillengineering.com

Structural Engineer
CRISER, TROUTMAN, TANNER
3809 PEACHTREE AVE., SUITE 102
WILMINGTON, NC 28403
910.397.2971 office
www.ctengineering.com

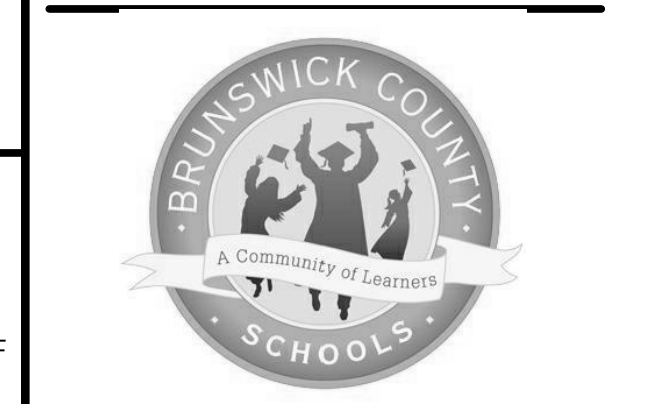
MEP Engineer
KSG DESIGN
1930 CAMDEN ROAD, SUITE 260
CHARLOTTE, NC 28203
704.364.3400 office
www.ksqdesign.com

Electrical Consultant
QUALITY CONSULTING ENGINEERS, PLLC
6277 693 CAROLINA COMMONS DRIVE,
#350 INDIAN LAND SC 29707
803.207.5450 office
sjones@qualityconsultingengineers.com

Acoustic & Technology Consultant
THORBURN ASSOCIATES
401 N. TYRON STREET - 10TH FLOOR
CHARLOTTE, NC 28202
910.886.7826 office
www.TA-inc.com

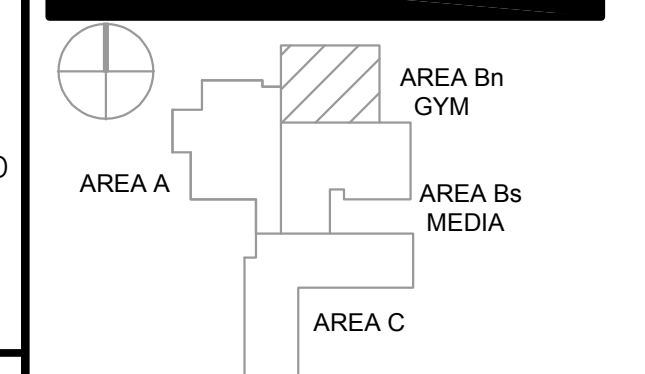
Building Envelope Consultant
SKA ENGINEERING
7741 MARKET STREET, SUITE F
WILMINGTON, NC 28411-9444
910.442.2000 office
www.skaeng.com

Food Service Consultant
HERBIN DESIGN
7325 DORN CIRCLE
CHARLOTTE, NC 28212-6914
704.900.0922
www.herbin.com



**TOWN CREEK
MIDDLE
SCHOOL**

6370 LAKE PARK DRIVE
SE
WINNABOW, NC 28479



REVISIONS

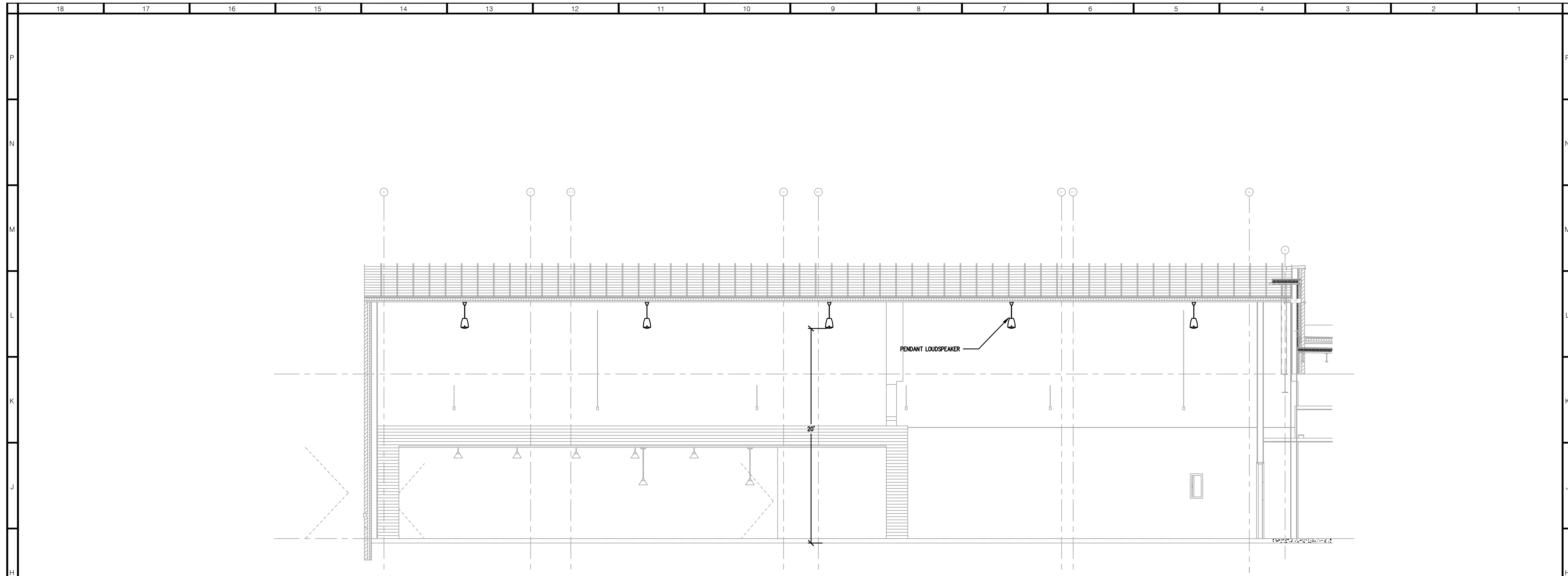
No.	Description	Date

ISSUED: CONSTRUCTION DOCUMENTS

DATE: 05/24/2018
SCALE: 1/16" = 1'-0"
SHEET NAME:
FIRST FLOOR REFLECTED
CEILING PLAN - AREA B

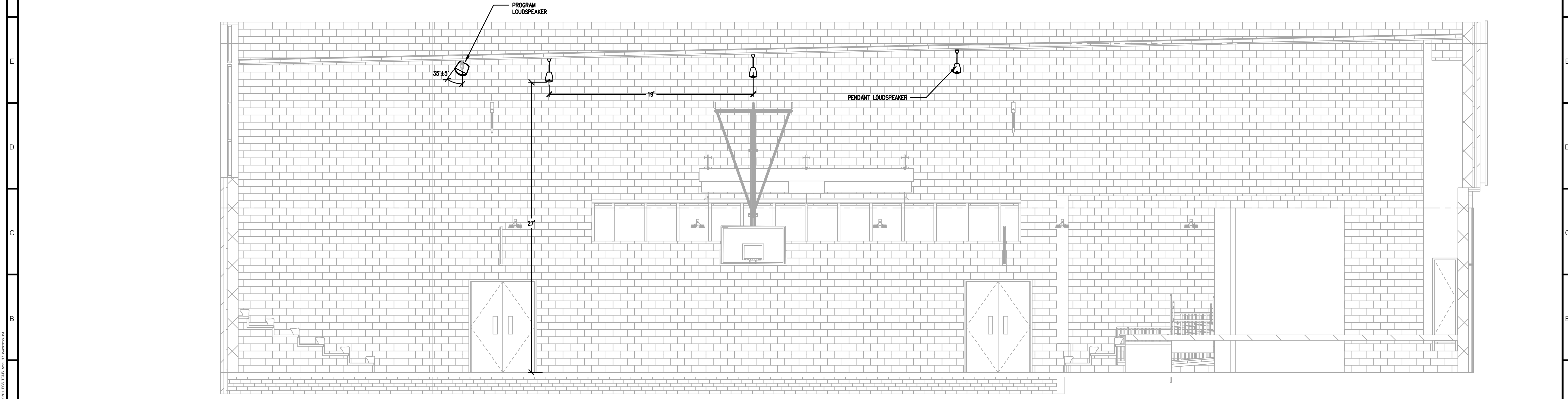
SHEET NUMBER:
TA-201Bn

DRAWN BY: J. ALLEN
CHECKED BY: J. ALLEN
DATE: 05/24/2018 10:29 AM



DINING (1302) SECTION
SCALE: 1/4" = 1' - 0"

3



GYM (1201) SECTION
SCALE: 1/4" = 1' - 0"

1

ARCHITECT
ksqdesign
NEW YORK OKLAHOMA NORTH CAROLINA
TEXAS COLORADO SOUTH CAROLINA

KSQ Design
1930 CAMDEN ROAD, SUITE 260
CHARLOTTE, NC 28203
704.364.3400 office
704.364.7080 fax
www.ksqdesign.com

Owner
BRUNSWICK COUNTY SCHOOLS
199 SESSIONS DRIVE
BOLIVIA, NC 28422
910.253.2900 office
www.bcsd.net

Civil Engineer
McGILL ASSOCIATES
712 VILLAGE ROAD SW, SUITE 103
SHALLOTTE, NC 28470
910.755.5872 office
www.mcgillengineer.com

Structural Engineer
CRISER, TROUTMAN, TANNER
3809 PEACHTREE AVE, SUITE 102
WILMINGTON, NC 28403
910.397.2971 office
www.ctengineering.com

MEP Engineer
KSO DESIGN
1930 CAMDEN ROAD, SUITE 260
CHARLOTTE, NC 28203
704.364.3400 office
www.ksqdesign.com

Electrical Consultant
QUALITY CONSULTING ENGINEERS, PLLC
6277-693 CAROLINA COMMONS DRIVE,
#350 INDIAN LAND SC 29707
803.207.5450 office
qlm@qualityconsultingengineers.com

Acoustic & Technology Consultant
THORBURN ASSOCIATES
401 N. TYRON STREET - 10TH FLOOR
CHARLOTTE, NC 28202
510.886.7826 office
www.TA-inc.com

Building Envelope Consultant
SKA ENGINEERING
7741 MARKET STREET, SUITE F
WILMINGTON, NC 28411-9444
910.442.2000 office
www.skaeng.com

Food Service Consultant
HERBIN DESIGN
7325 DORN CIRCLE
CHARLOTTE, NC 28212-6914
704.900.0922
www.herbin.com



**TOWN CREEK
MIDDLE
SCHOOL**

6370 LAKE PARK DRIVE
SE
WINNABOW, NC 28479

REVISIONS

No.	Description	Date

ISSUED: CONSTRUCTION DOCUMENTS

DATE: 05/24/2018
SCALE: 1/16" = 1'-0"
SHEET NAME:
SECTIONS AND ELEVATIONS

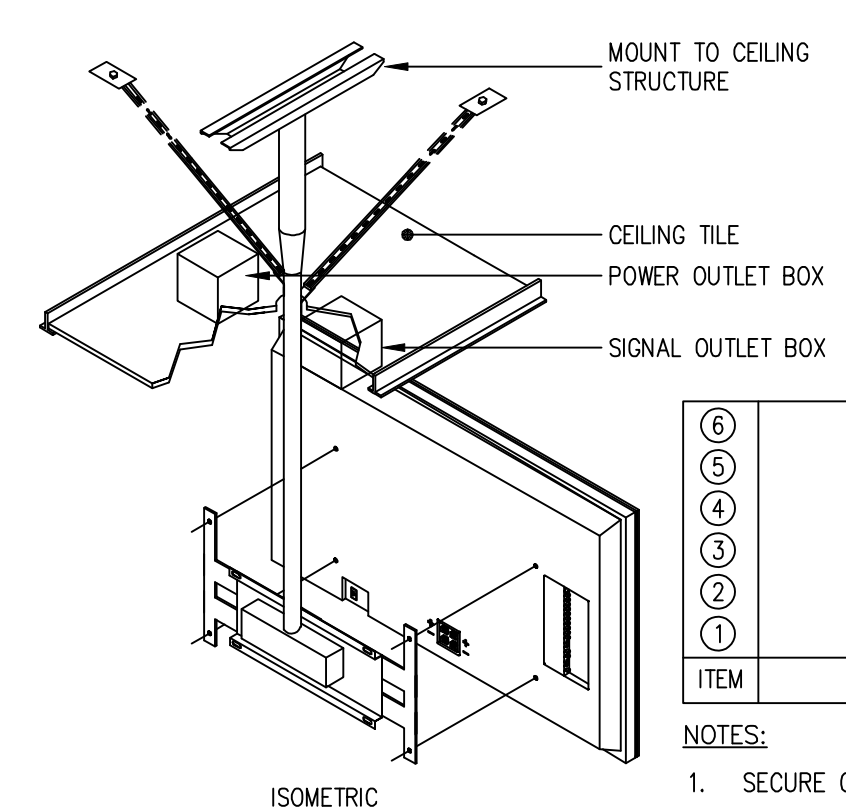
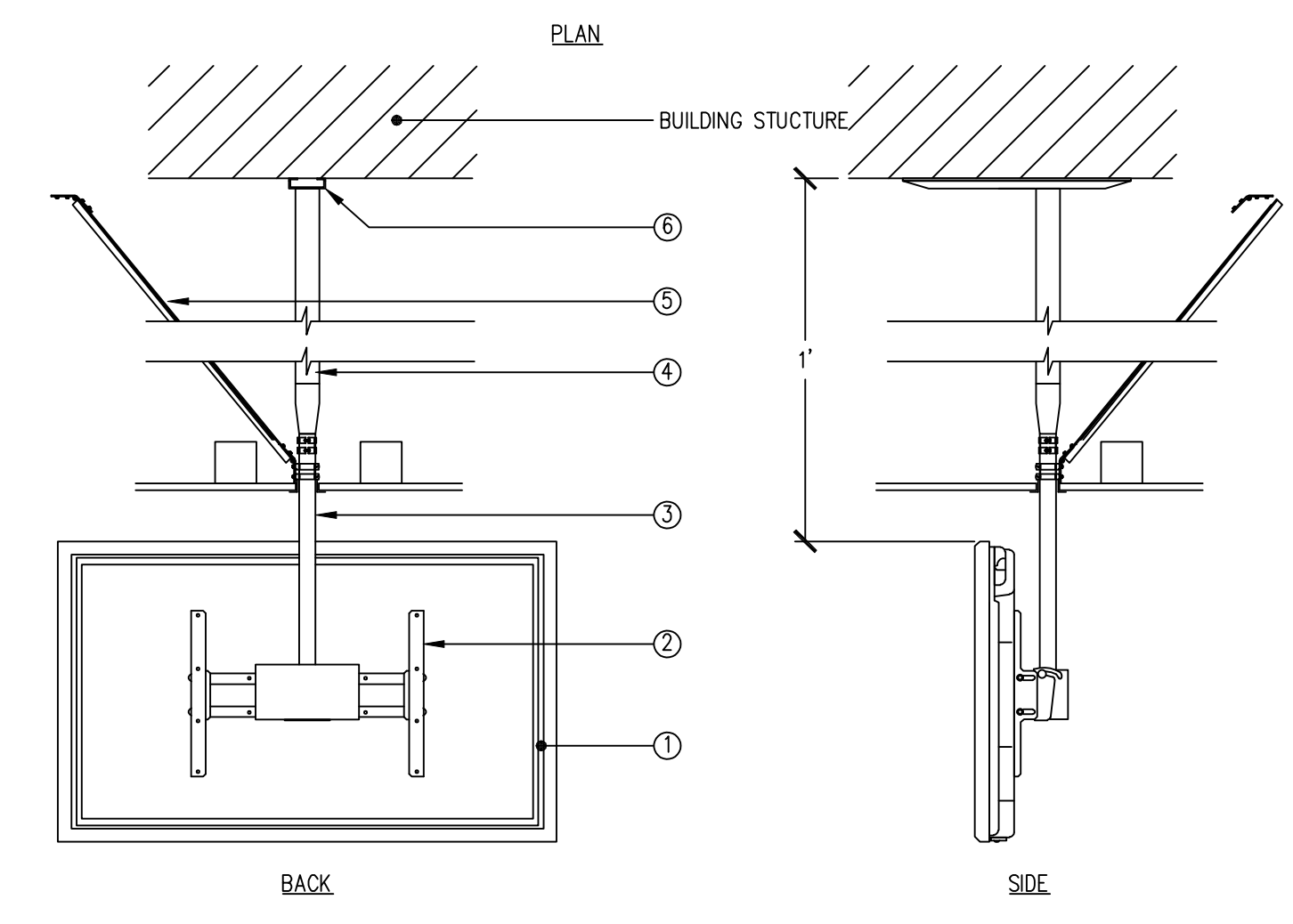
SHEET NUMBER:

TA-301

P
N
M
L
K
J
H
G
F
E
D
C
B
A

18 17 16 15 14 13 12 11 10 9 8 7 6 5 4 3 2 1

ARCHITECT
ksqdesign
NEW YORK OKLAHOMA NORTH CAROLINA
TEXAS COLORADO SOUTH CAROLINA
KSG Design
1930 CAMDEN ROAD, SUITE 260
CHARLOTTE, NC 28203
704.364.3400 office
704.364.7080 fax
www.ksqdesign.com
Owner
BRUNSWICK COUNTY SCHOOLS
199 SESSIONS DRIVE
BOLIVIA, NC 28422
910.253.2900 office
www.bcsdwan.net
Civil Engineer
McGILL ASSOCIATES
712 VILLAGE ROAD SW, SUITE 103
SHALLOTTE, NC 28470
910.755.5872 office
www.mcgillengineer.com
Structural Engineer
CRISER, TROUTMAN, TANNER
3809 PEACHTREE AVE, SUITE 102
WILMINGTON, NC 28403
910.397.2971 office
www.ctengineering.com
MEP Engineer
KSG DESIGN
1930 CAMDEN ROAD, SUITE 260
CHARLOTTE, NC 28203
704.364.3400 office
www.ksqdesign.com
Electrical Consultant
QUALITY CONSULTING ENGINEERS, PLLC
6277-693 CAROLINA COMMONS DRIVE,
#350 INDIAN LAND SC 29707
803.207.5450 office
qjones@qualityconsultingengineers.com
Acoustic & Technology Consultant
THORBURN ASSOCIATES
401 N. TYRON STREET, 10TH FLOOR
CHARLOTTE, NC 28202
510.886.7826 office
www.TA-inc.com
Building Envelope Consultant
SKA ENGINEERING
7741 MARKET STREET, SUITE F
WILMINGTON, NC 28411-9444
910.442.2000 office
www.skaeng.com
Food Service Consultant
HERBIN DESIGN
7325 DORN CIRCLE
CHARLOTTE, NC 28212-6914
704.900.0922
www.herbin.com

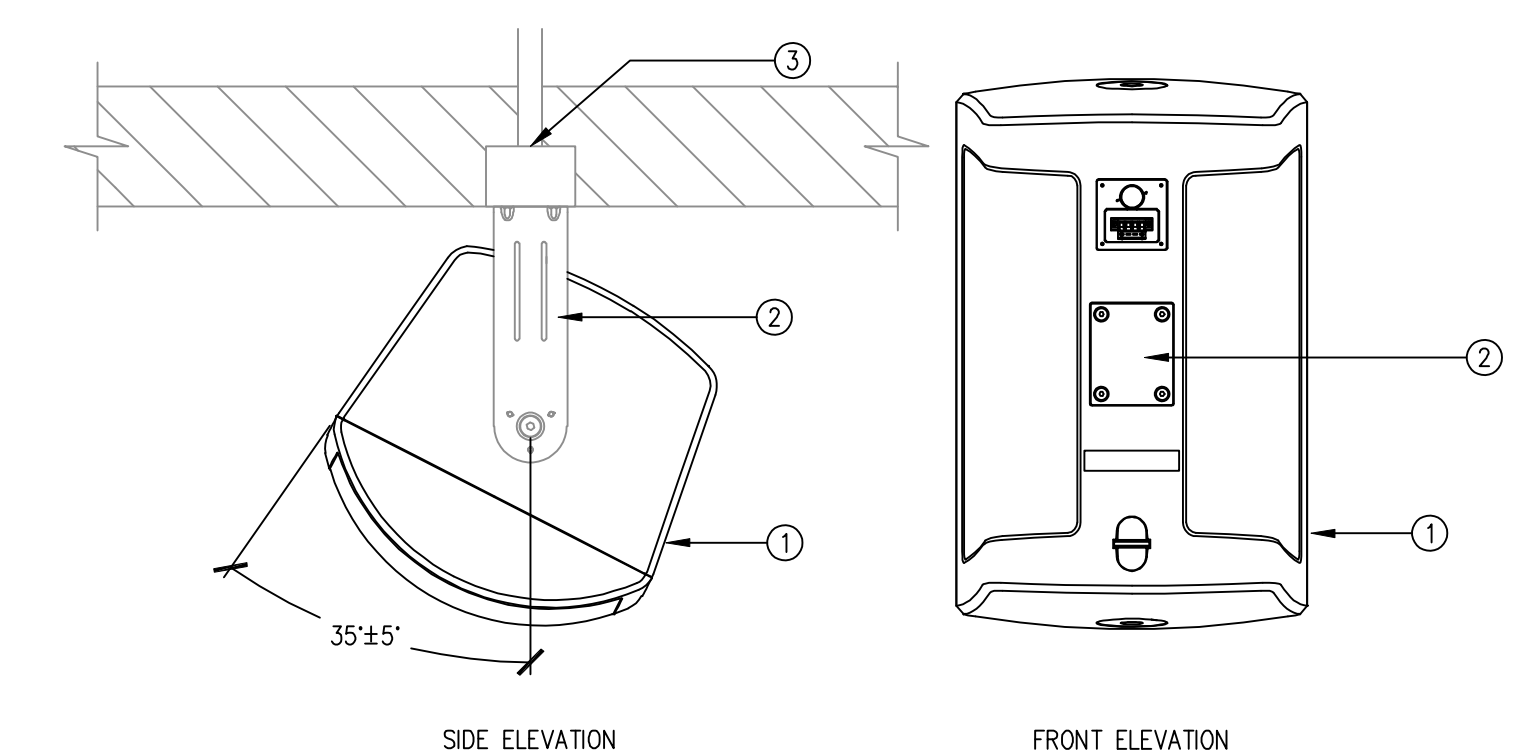


ITEM	DESCRIPTION	MFG/MODEL	BY	QTY.
6	CEILING PLATE		AS PER AV SPEC	AVC 1
5	EXTENSION STABILIZING KIT		AS PER AV SPEC	AVC 1
4	ADJUSTABLE LENGTH EXTENSION COLUMN		AS SPECIFIED	AVC 1
3	COLUMN CEILING MOUNT		AS SPECIFIED	AVC 1
2	ADAPTER PLATE		AS SPECIFIED	AVC 1
1	LCD DISPLAY		AS SPECIFIED	AVC 1

NOTES:
1. SECURE CEILING PLATE TO BUILDING STRUCTURE TO SUPPORT 150 LBS.

CEILING MOUNTED DISPLAY

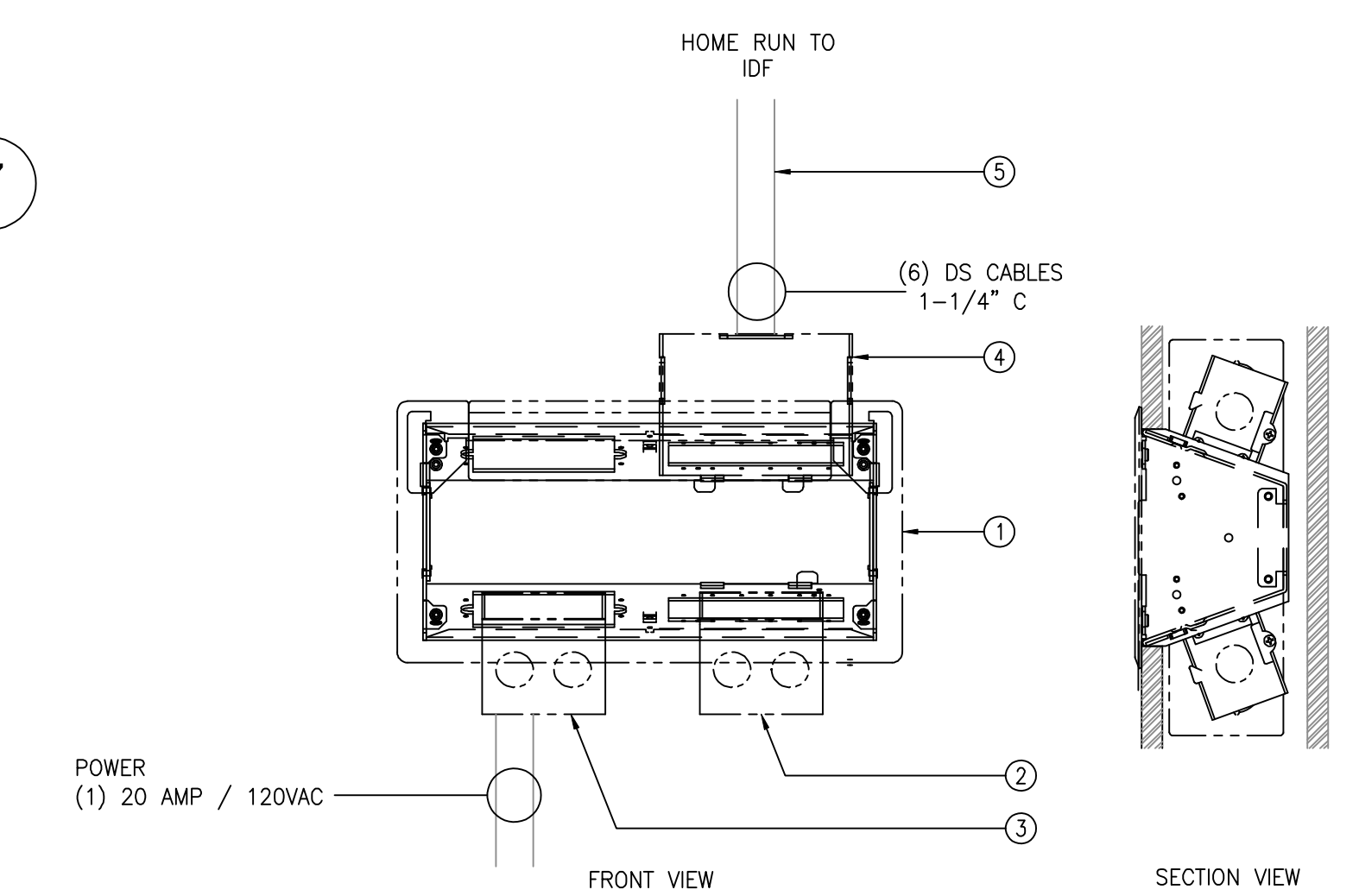
SCALE: NTS



ITEM	DESCRIPTION	MFG/MODEL	BY	QTY.
3	CEILING BOX		AS SPECIFIED	EC 1
2	MOUNTING BRACKET		AS SPECIFIED	AVC 1
1	LOUDSPEAKER	TANNOY AMS 8DC	AVC	1

PROGRAM LOUDSPEAKER MOUNTING

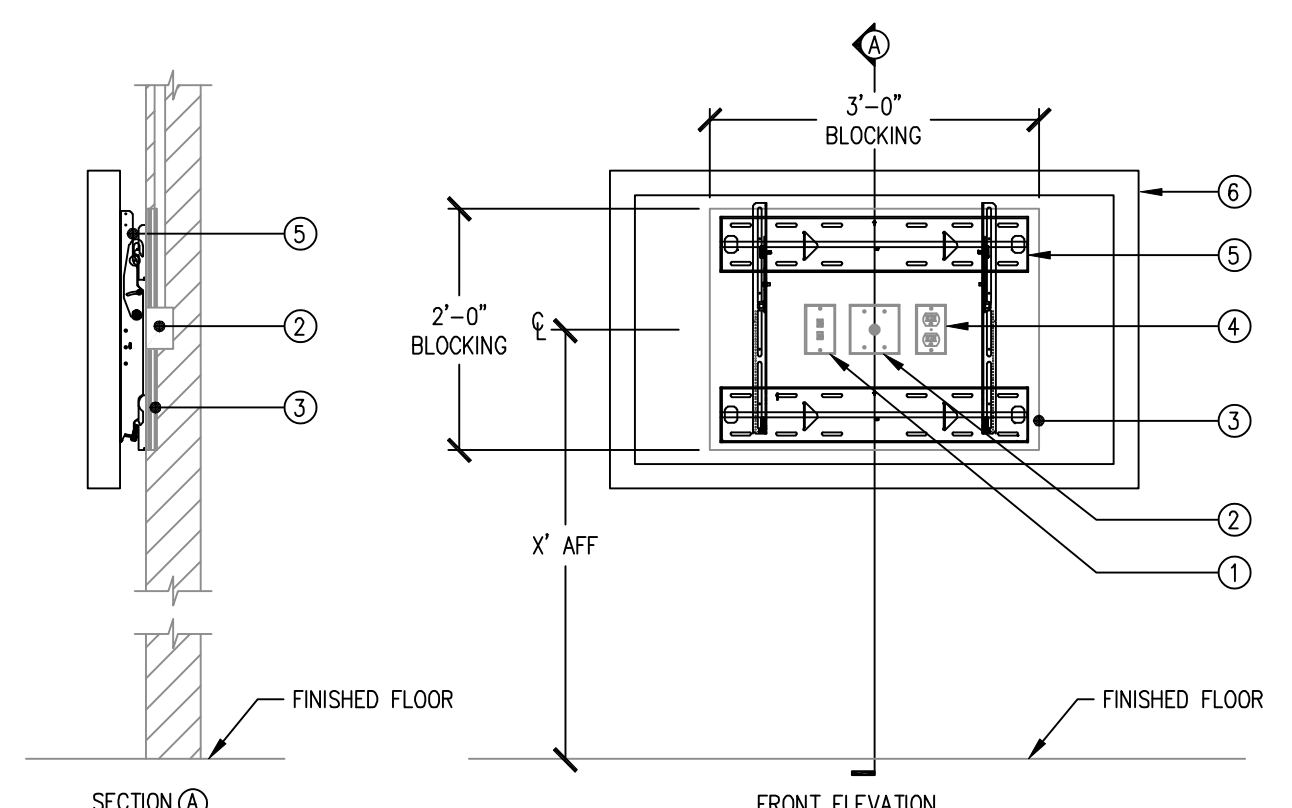
SCALE: NTS



ITEM	DESCRIPTION	PROVIDED BY	QTY.
5	CUSTOM FEMALE HDMI / FEMALE USB TYPE B PLATE		AVC 1
4	DATA - 2 PORTS		DTC 1
3	POWER - 20 AMP 120VAC		EC 1
2	CUSTOM CONTACT CLOSURE SWITCH PLATE		AVC 1
1	4 GANG WALL BOX		AVC 1

AUDIOVISUAL WALL BOX DETAIL

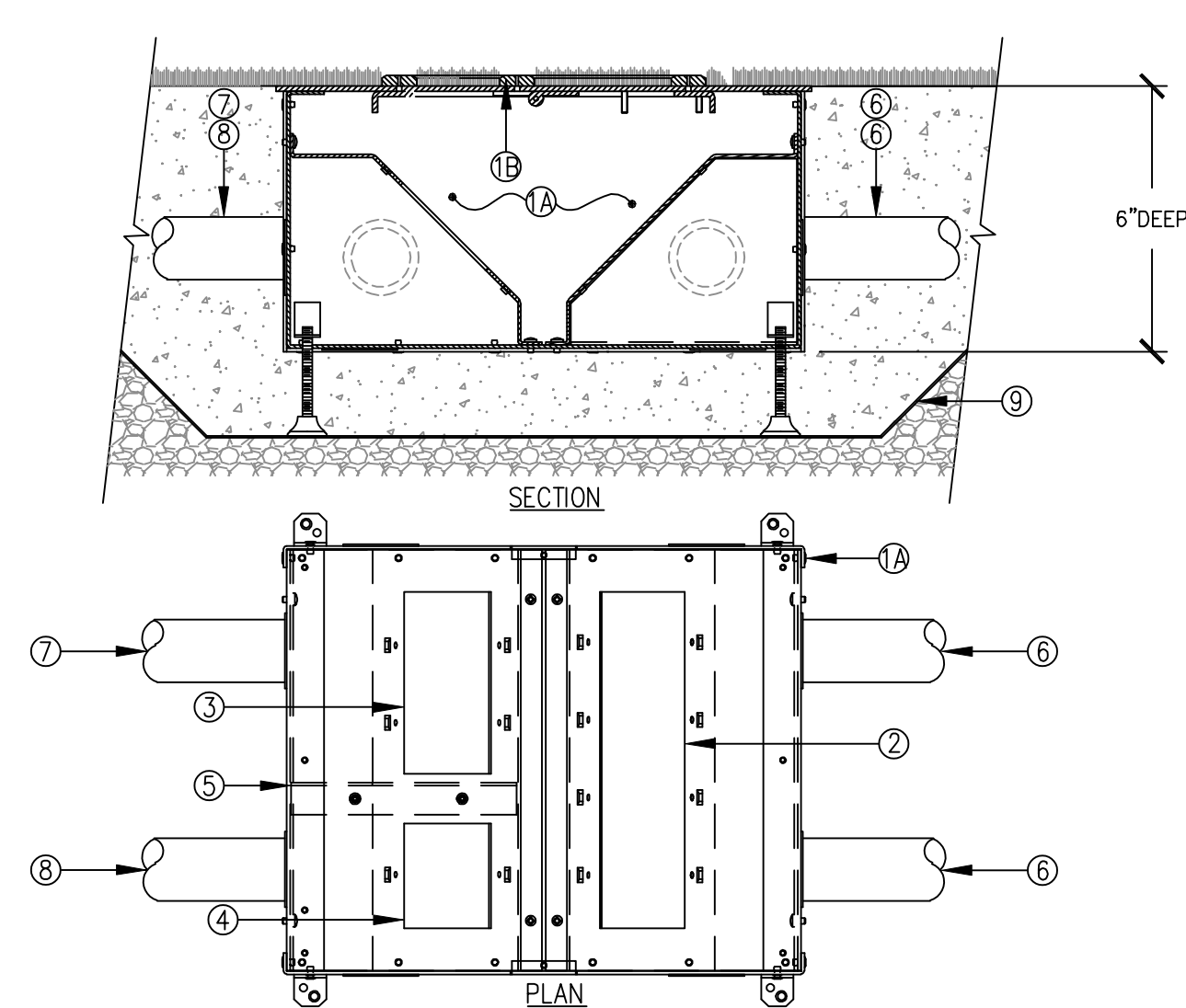
SCALE: NTS



ITEM	DESCRIPTION	MFG/MODEL	BY	QTY.
6	X" DISPLAY		AS PER AV SPEC	AVC AS REQ.
5	DISPLAY MOUNTING BRACKET		AS PER AV SPEC	AVC 1
4	POWER OUTLET		AS SPECIFIED	EC 1
3	BLOCKING TO SUPPORT 150 LBS		AS SPECIFIED	EC 1
2	LCD DISPLAY CABLE OUTLET BOX		AS SPECIFIED	EC 1
1	DATA OUTLET BOX		AS SPECIFIED	EC 1

TYPICAL FLAT PANEL DISPLAY MOUNTING

SCALE: NTS

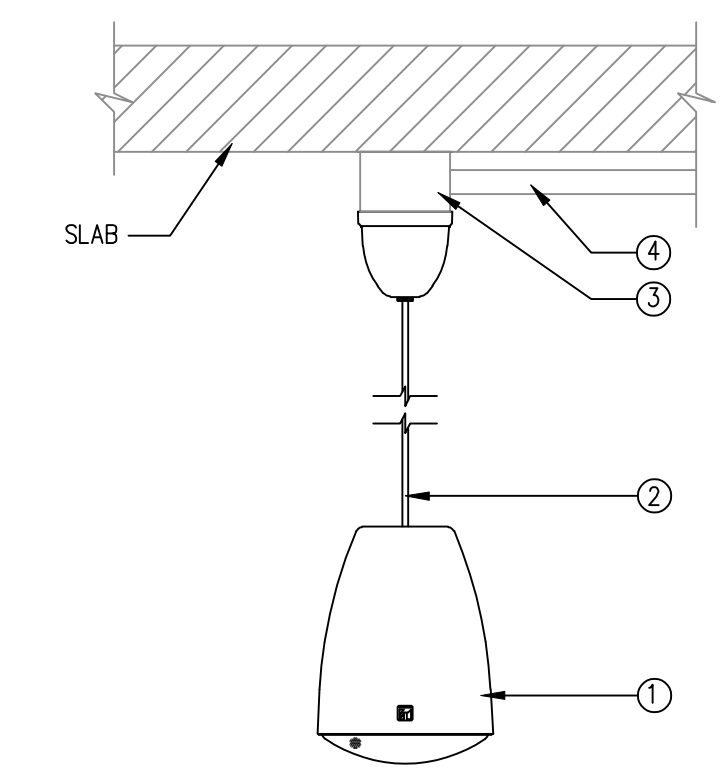


ITEM	DESCRIPTION	MFG/MODEL	BY	QTY.
10	POUR PAN		FSR #FL-GRD4 (4") OR #FL-GRD2 (2")	EC/CC 1
9	POWER CONDUIT (1/2" OR 3/4" KNOCKOUT)		AS SPECIFIED	EC 1
8	DATA CONDUIT (1/2" OR 3/4" KNOCKOUT)		AS SPECIFIED	EC 1
7	AV CONDUIT (1/2" OR 3/4" KNOCKOUT)		AS SPECIFIED	EC 1
6	AC DIVIDER PLATE		INCLUDED	
5	POWER -- 1 GANG (BY EC)		AS SPECIFIED	EC 1
4	DATA -- 1 GANG (BY DTC)		AS SPECIFIED	DTC 1
3	AV -- 3 GANG (BY AVC)		PER AV SPEC	AVC 1
2	AV -- 6 GANG (BY AVC)		PER AV SPEC	AVC 1
1B	FLOOR BOX		FSR # FL-500P-6	EC/CC 1
1A	BOX COVER		(FSR # FL-600P-X-C)	EC/CC 1

NOTE:
1. THIS FLOOR BOX IS MANUFACTURED AND DISTRIBUTED BY FSR INC. (973) 785-4347

AV FLOOR BOX DETAIL

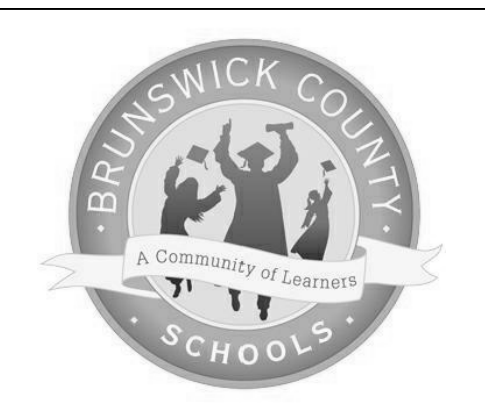
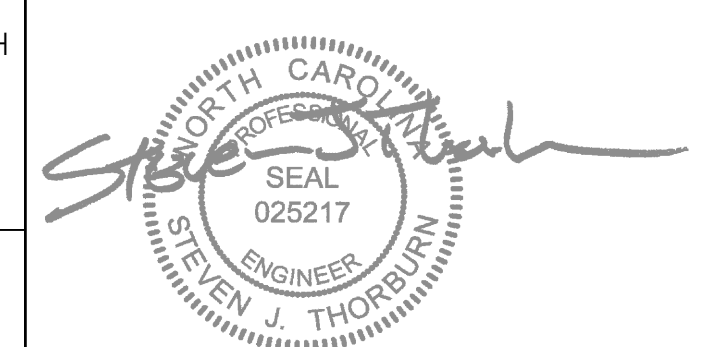
SCALE: NTS



ITEM	DESCRIPTION	MFG/MODEL	BY	QTY.
4	CONDUIT		AS PER ELEC SPEC	EC 1
3	2 GANG BOX		AS PER ELEC SPEC	EC 1
2	SUPPORT/SPEAKER CABLE		AS SPECIFIED	AVC 1
1	PENDANT LOUDSPEAKER	TANNOY DCV 8	AVC	1

PENDANT LOUDSPEAKER MOUNTING

SCALE: NTS



TOWN CREEK MIDDLE SCHOOL

6370 LAKE PARK DRIVE SE
WINNABOW, NC 28479

REVISIONS

No.	Description	Date

ISSUED: CONSTRUCTION DOCUMENTS
DATE: 05/24/2018
SCALE: 1/16" = 1'-0"
SHEET NAME: COORDINATION DETAILS

SHEET NUMBER: TA-701