



NEW YORK OHLAHOMA NORTH CAROLINA  
TEXAS COLORADO SOUTH CAROLINA

KSQ Design  
1930 CAMDEN ROAD, SUITE 260  
CHARLOTTE, NC 28203  
704.364.3400 office  
704.364.7080 fax  
www.ksqdesign.com

Owner  
**BRUNSWICK COUNTY SCHOOLS**  
199 SESSIONS DRIVE  
SOLIVA, NC 28427  
910.253.2900 office  
www.bcswan.net

Civil Engineer  
McGILL ASSOCIATES  
712 VILLAGE ROAD SW, SUITE 103  
SHALLOTTE, NC 28470  
910.755.5872 office  
www.mcgillengineer.com

Structural Engineer  
CRISER TROUTMAN TANNER  
3809 PRACETREE AVE., SUITE 102  
WILMINGTON, NC 28403  
910.397.2971 office  
www.ctengineering.com

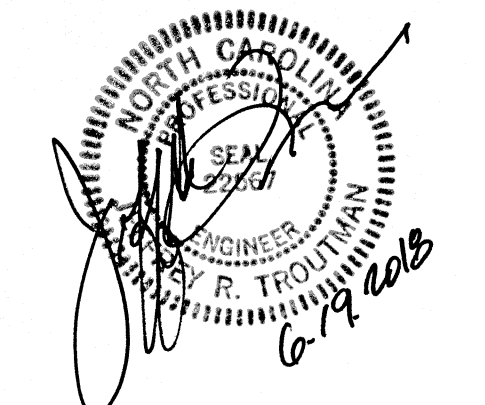
MEP Engineer  
KSO DESIGN  
2115 REXFORD ROAD, SUITE 500  
CHARLOTTE, NC 28211  
704.364.3400 office  
www.ksqdesign.com

Electrical Consultant  
Quality Consulting Engineers, PLLC  
6277-600 Carolina Commons Drive, #350  
Indian Land, SC 29707  
(p) 803.207.5450 office  
qjones@qualityconsultingengineers.com

Acoustic & Technology Consultant  
THORBURK ASSOCIATES  
401 N. TYRON STREET, 10TH FLOOR  
CHARLOTTE, NC 28202  
510.385.7828 office  
www.TA-inc.com

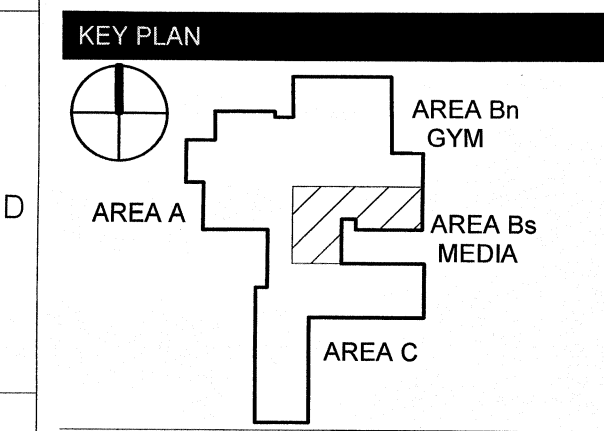
Building Envelope Consultant  
SKA ENGINEERING  
7741 MARKET STREET, SUITE F  
WILMINGTON, NC 28411-9444  
910.442.2000 office  
www.skaeng.com

Food Service Consultant  
HERBIN DESIGN  
7325 DORN CIRCLE  
CHARLOTTE, NC 28212-6914  
704.900.0922  
www.herbin.com



# TOWN CREEK MIDDLE SCHOOL

6370 LAKE PARK DRIVE SE  
WINNABOW, NC 28479



REVISIONS

No.	Description	Date
2	Addendum #2	6/19/18

ISSUED: CONSTRUCTION DOCUMENTS

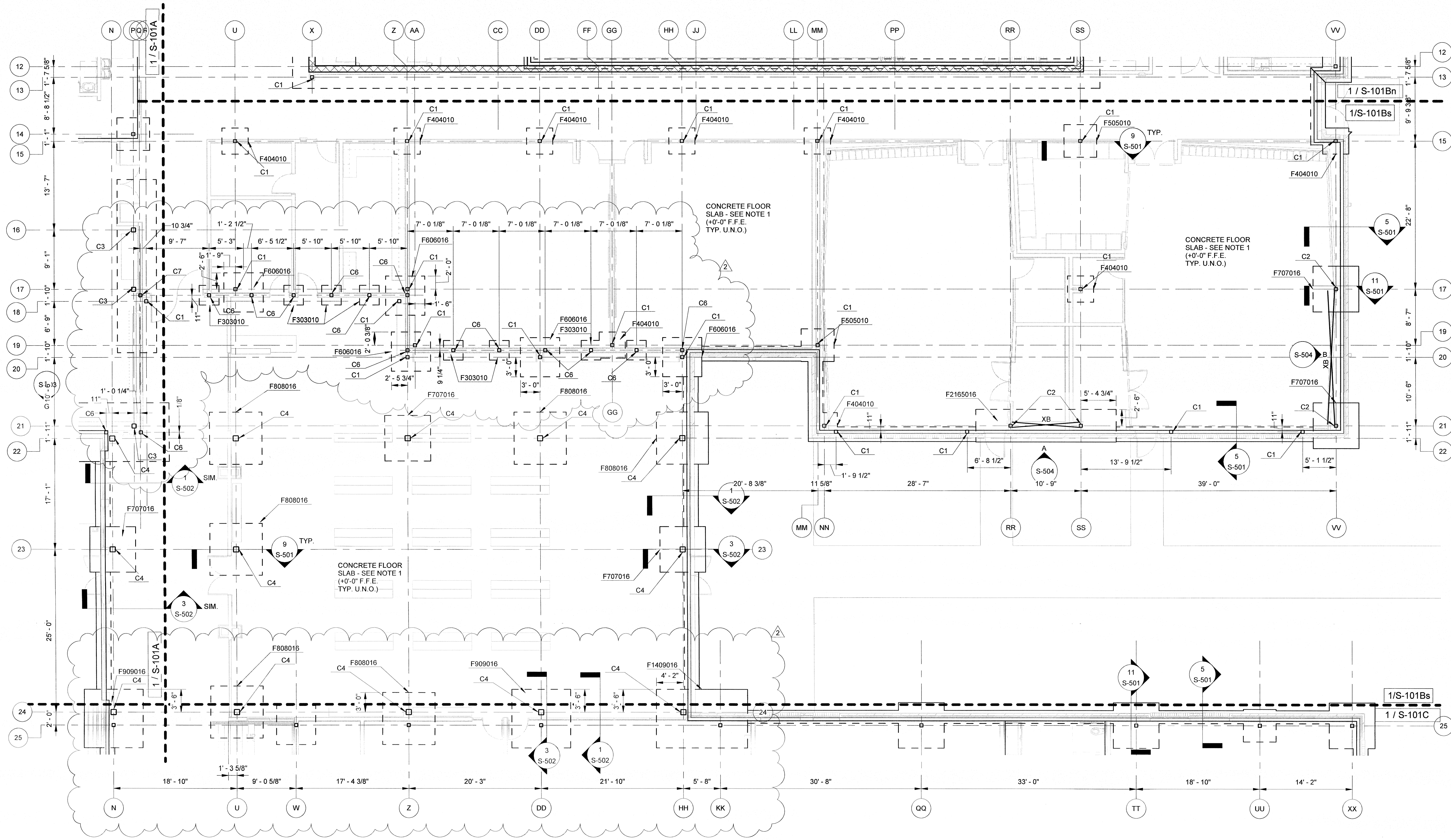
DATE: 05/24/2018

SCALE: As indicated

SHEET NAME: FOUNDATION PLAN - AREA B SOUTH

SHEET NUMBER:

## S-101Bs



### FOUNDATION AND SLAB PLAN - AREA B SOUTH

1/8" = 1'-0" 1

- FOUNDATION PLAN NOTES:
- TYPICAL SLAB-ON-GRADE SHALL BE 4", 3000 PSI CONCRETE REINFORCED W/ 6x6-W2.9xW2.9 WWR ON VAPOR RETARDER OVER 6" POROUS STONE FILL ON COMPACTED SUBGRADE/FILL, U.N.O.
  - HATCHED AREA DENOTES SLAB DEPRESSIONS. SEE ARCHITECTURAL DRAWINGS FOR EXTENTS VERIFY DEPRESSION DEPTH.
  - C - INDICATES COLUMN MARK - SEE COLUMN SCHEDULE.
  - F - INDICATES FOOTING MARK - SEE FOOTING SCHEDULE.
  - XB - INDICATES STEEL CROSS-BRACING.
  - CB - INDICATES STEEL COMPRESSION BRACING.
  - FINISH FLOOR ELEVATION - SEE ARCH DRAWINGS.
  - TYPICAL TOP OF FOOTING DEPTH AT EXTERIOR IS [2'-0"] BELOW FINISHED FLOOR & [1'-0"] AT INTERIOR, U.N.O.
  - PROVIDE CONTROL JOINTS (C.J.) USING SAWED JOINTS (S.J.) OR KEVED JOINTS (K.J.) AS REQUIRED BY CONCRETE PLACEMENT. DETAILS 1/S-501 RESPECTIVELY BUT SHALL NOT BE LOCATED MORE THAN 16' APART AND SHALL HAVE AREAS LIMITED TO A MAXIMUM LENGTH-TO-WIDTH RATIO OF 1.5 OR LESS, U.N.O. FOR SLABS. SAWCUT PER SPECIFICATIONS.
  - SEE ARCHITECTURAL DRAWINGS FOR MASONRY WALL JOINT LOCATIONS. SEE 1/S-504 FOR JOINT DETAIL.
  - PROVIDE COLUMN ISOLATION JOINTS AT EACH COLUMN PER 4/S-501.

COLUMN SCHEDULE

MARK	C1	C2	C3	C4	C5	C6	C7	C8
MARK	HSS60x6x1/4	HSS56x6x3/8	HSS36x6x5/8	HSS10x10x1/2	W12x50	HSS56x6x3/8	HSS36x6x5/8	HSS36x6x3/8
BASE PLATE MARK	BP-1	BP-2	BP-3	BP-4	BP-5	BP-1	BP-1	BP-6
ANCHOR BOLT MARK	AR-1 (U.N.O.)	AR-2	AR-2	AR-2	AR-2	AR-1	AR-1	AR-1

NOTE: SEE S-502 FOR BASE PLATE AND ANCHOR BOLT DETAILS.

STRUCTURAL FOUNDATION SCHEDULE

MARK	SIZE			REINF.	COMMENTS
	LENGTH	WIDTH	THICKNESS		
F303010	7'-0"	7'-0"	1'-0"	(8) #5 EACH WAY	
F404010	4'-0"	4'-0"	1'-0"	(3) #5 E.W. BOTT.	
F505010	5'-0"	5'-0"	1'-0"	(5) #5 E.W. BOTT.	
F606010	6'-0"	6'-0"	1'-0"	(6) #5 E.W. BOTT.	
F606016	6'-0"	6'-0"	1'-6"	(11) #6 E.W. T&B	
F707016	7'-0"	7'-0"	1'-6"	(9) #5 E.W. T&B	
F808016	8'-0"	8'-0"	1'-6"	(16) #4 E.W. T&B	
F909016	9'-0"	9'-0"	1'-6"	(5) #7 T&B LONG, (9) #6 BOTT. TRANS.	
F1409020	14'-0"	9'-0"	2'-0"	(14) #5 E.W. T&B	
F2165016	21'-6"	5'-0"	1'-6"	(16) #5 LONG T&B, (22) #6 TRANS. T&B	
F2866016	28'-6"	6'-0"	1'-6"	(4) #7 T&B LONG, (23) #6 T&B TRANS.	
F2866016	28'-6"	6'-0"	1'-6"	(5) #9 T&B LONG, (44) #6 T&B TRANS.	
F3506020	35'-0"	6'-0"	2'-0"	(5) #8 T&B LONG, (39) #6 T&B TRANS.	
F3505020	35'-0"	5'-0"	2'-0"	(4) #10 T&B LONG, (37) #6 T&B TRANS.	
F4307020	43'-0"	7'-0"	2'-0"	(8) #6 T&B LONG, (43) #6 T&B TRANS.	
F4607020	46'-0"	7'-0"	2'-0"	(7) #6 TOP LONG, (21) #6 BOTT. LONG, (46) #6 T&B TRANS.	
F1101016	11'-0"	11'-0"	1'-6"	(8) #7 E.W. T&B	
F14014020	14'-0"	14'-0"	2'-0"	(10) #6 E.W. T&B	
F-ELEVATOR	11'-11 1/4"	10'-3 1/4"	1'-6"	#6 @ 9" E.W. TOP & BOT. #6 @ 9" O.C. E.W. T&B	