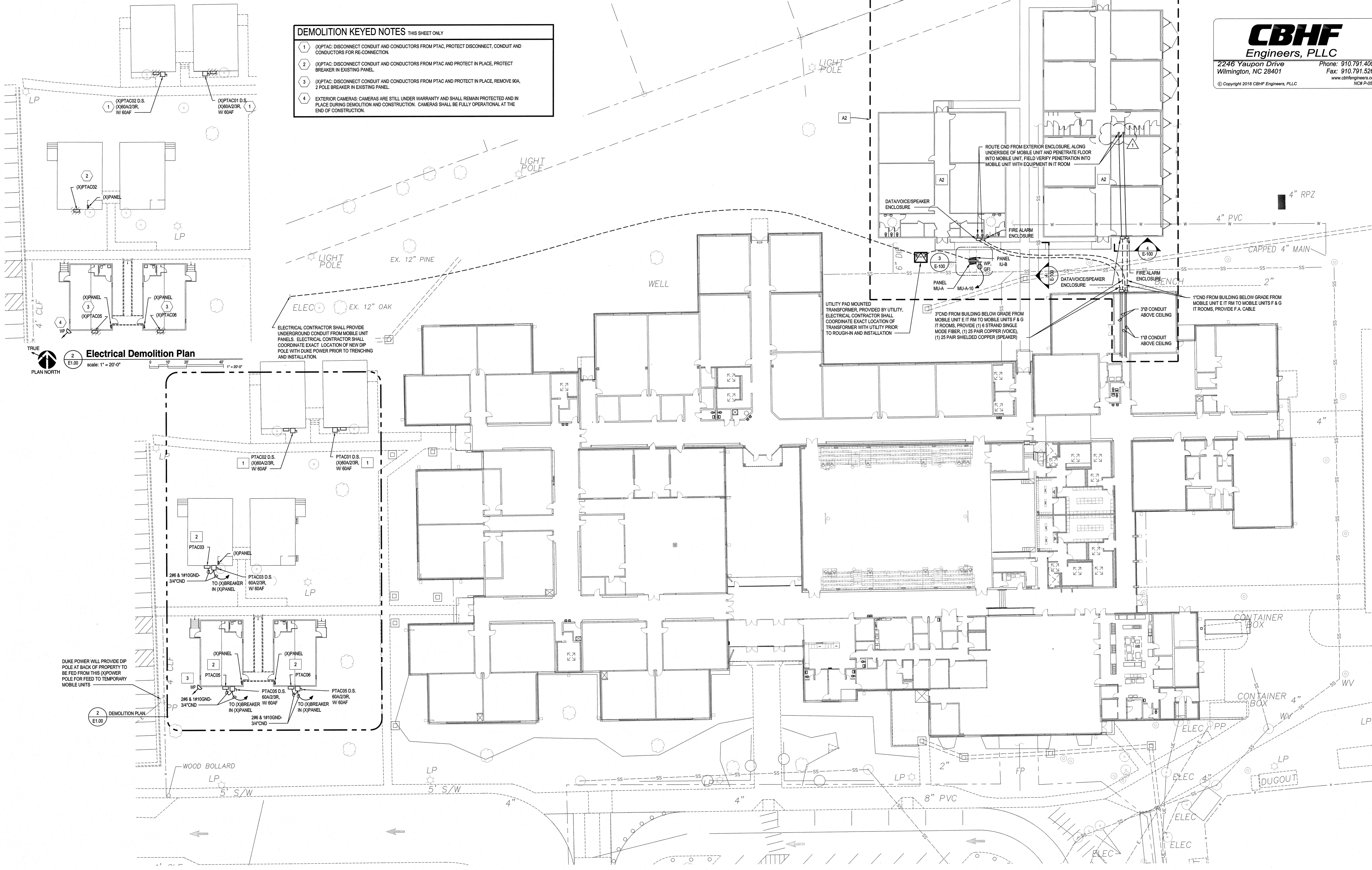


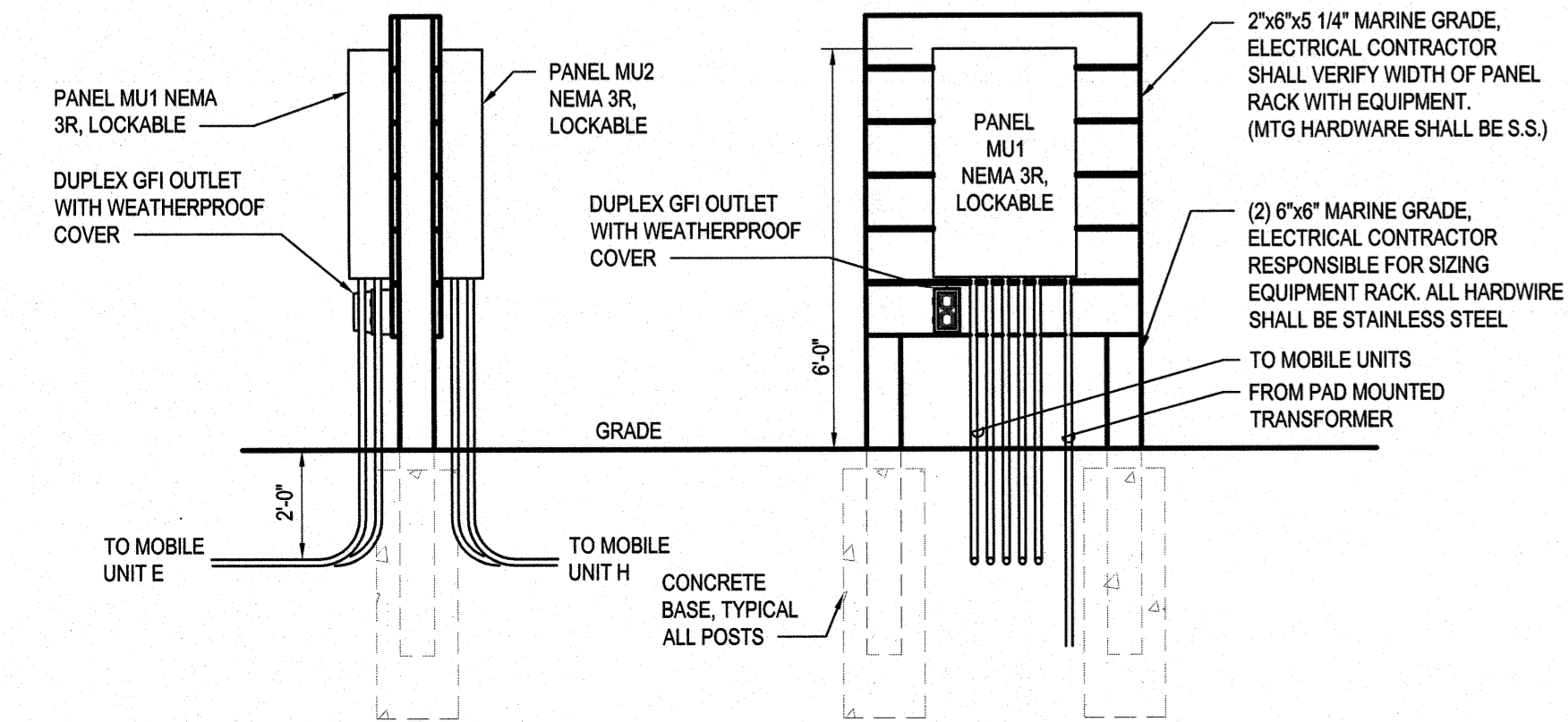
DEMOLITION KEYED NOTES THIS SHEET ONLY

- (X)PTAC: DISCONNECT CONDUIT AND CONDUCTORS FROM PTAC, PROTECT DISCONNECT, CONDUIT AND CONDUCTORS FOR RE-CONNECTION.
- (X)PTAC: DISCONNECT CONDUIT AND CONDUCTORS FROM PTAC AND PROTECT IN PLACE, PROTECT BREAKER IN EXISTING PANEL.
- (X)PTAC: DISCONNECT CONDUIT AND CONDUCTORS FROM PTAC AND PROTECT IN PLACE, REMOVE 60A, 2 POLE BREAKER IN EXISTING PANEL.
- EXTERIOR CAMERAS: CAMERAS ARE STILL UNDER WARRANTY AND SHALL REMAIN PROTECTED AND IN PLACE DURING DEMOLITION AND CONSTRUCTION. CAMERAS SHALL BE FULLY OPERATIONAL AT THE END OF CONSTRUCTION.

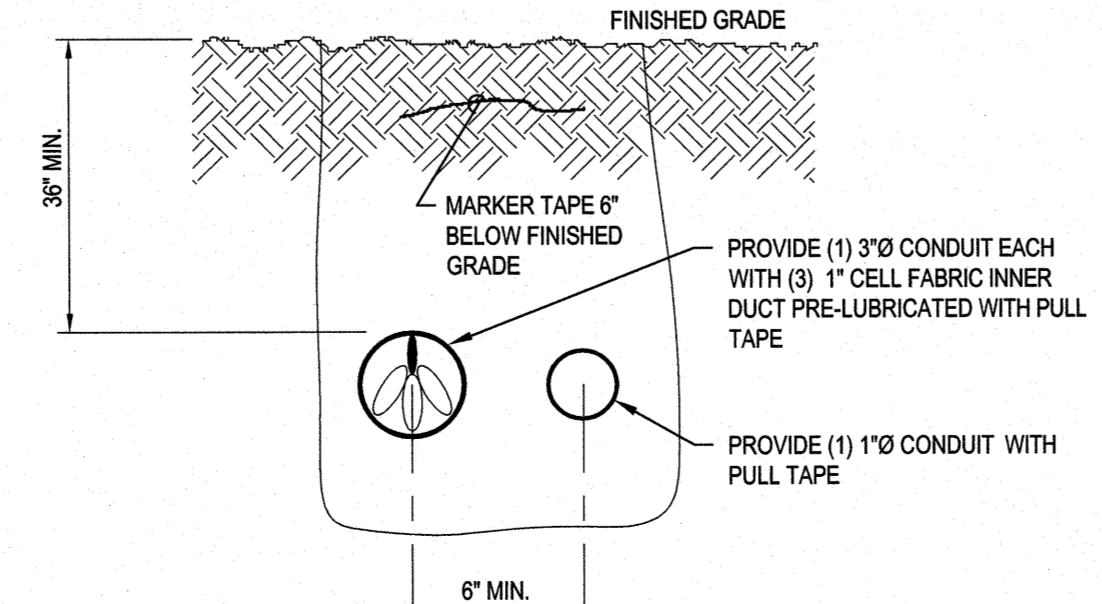


Electrical Demolition Plan
E1.00
scale: 1" = 20'-0"

DUKE POWER WILL PROVIDE DIP POLE AT BACK OF PROPERTY TO BE FED FROM THIS (X)POWER POLE FOR FEED TO TEMPORARY MOBILE UNITS



3 EQUIPMENT RACK DETAIL
E1.00 Not To Scale



4 TELECOM DUCTBANK SECTION
E1.00 Not To Scale

KEYED NOTES THIS SHEET ONLY

- PTAC: CONNECT CONDUIT AND CONDUCTORS REMOVED AND PROTECTED DURING DEMOLITION.
- PTAC: PROVIDE 60A, 2 POLE BREAKER IN EXISTING PANEL, CONNECT CONDUIT AND CONDUCTORS REMOVED AND PROTECTED DURING DEMOLITION.
- EXTERIOR CAMERAS: CONTRACTOR SHALL VERIFY CAMERA IS OPERATIONAL.

ALTERNATE KEYED NOTE

A2 MOBILE UNITS: ALL SYSTEMS SECURITY INFRASTRUCTURE SHALL BE INCLUDED IN ALTERNATE #2.

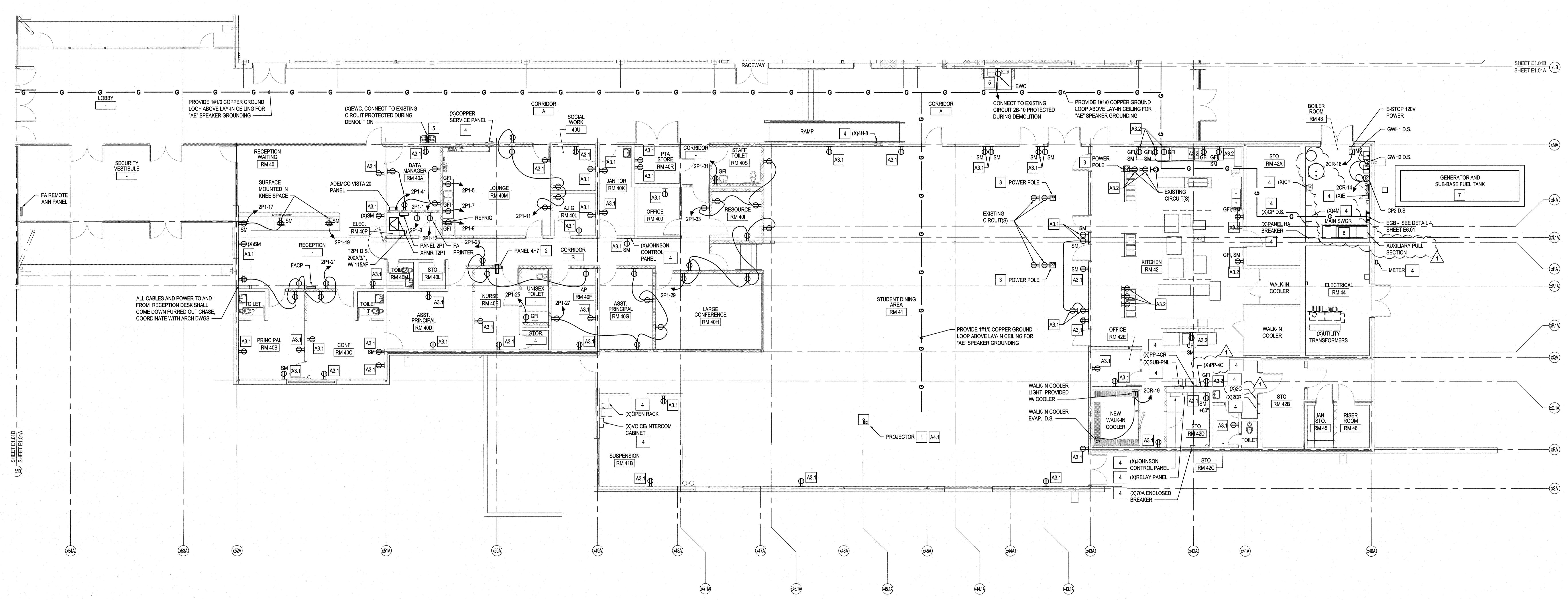
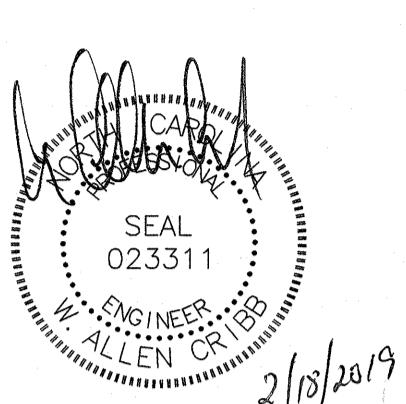
Site Plan - Electrical
E1.00
scale: 1" = 20'-0"

Renovations to:
M.C.S. Noble Middle School
6520 Market Street
Wilmington, North Carolina 28405

SITE PLAN - ELECTRICAL
DEMOLITION, NEW WORK
AND DETAILS

JOB NUMBER
18005
DRAWN BY
HGH
CHECKED BY
WAC
DATE
02-04-2019
REVISIONS
ADDENDUM #1: DEPARTMENT
OF PUBLIC INSTRUCTION
RESPONSE 2-18-2019

SHEET NUMBER
E1.00



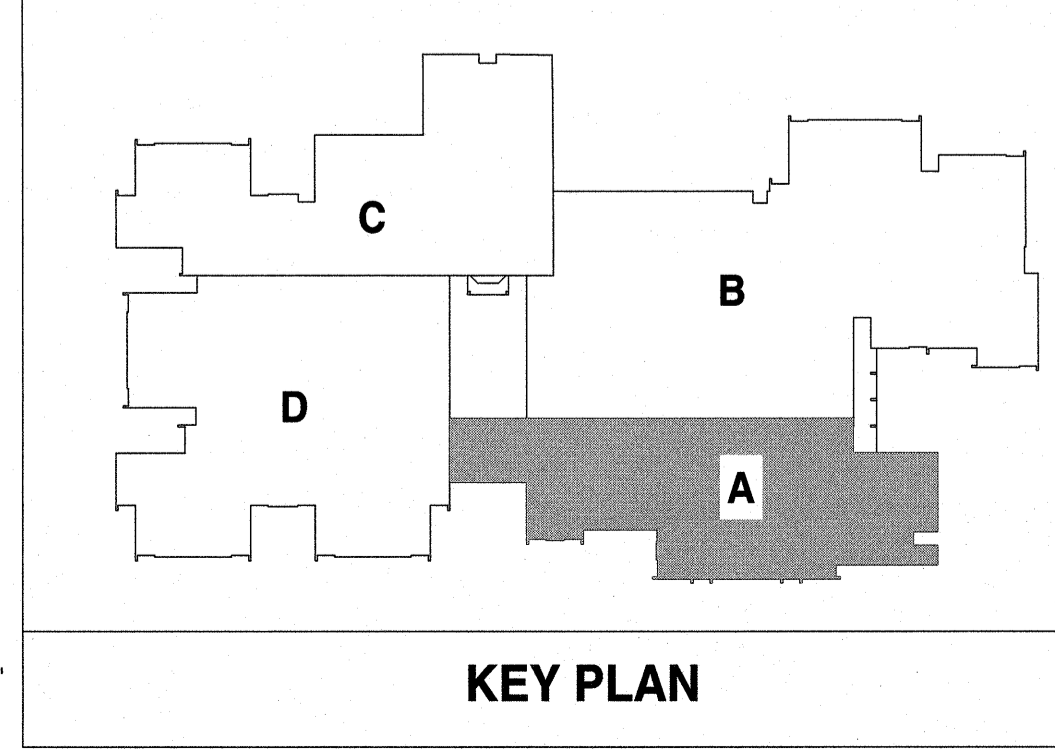
KEYED NOTES THIS SHEET ONLY	
1	PROJECTOR: PROVIDE 2#12 & #12GND, 3/4" CND AND EXTEND CIRCUIT TO PROJECTOR PAN IN LOCATION INDICATED. RECONNECT DUPLEX RECEPTACLE IN PROJECTOR PAN.
2	PROVIDE JUNCTION BOX, (1) ABOVE CEILING AS REQUIRED TO EXTEND PANEL CONDUIT AND CONDUCTORS TO PANEL 4H7 NEW LOCATION, SEE RISER DIAGRAM
3	POWER POLE: CONNECT RECEPTABLES TO CONDUCTORS REMOVED AND PROTECTED ABOVE CEILING DURING DEMOLITION.
4	EQUIPMENT: EQUIPMENT SHALL BE OPERATIONAL AFTER DEMOLITION AND CONSTRUCTION.
5	EWC: ELECTRICAL CONTRACTOR SHALL TRACE EXISTING EWC CIRCUIT AND REPLACE BREAKER WITH GFI BREAKER. PROVIDE DUPLEX RECEPTACLE AND PROVIDE ALL NEW CONDUCTORS FROM GFI BREAKER TO RECEPTACLE. NEUTRAL CONDUCTORS SHALL BE DEDICATED PER BREAKER AND NOT SHARED.
6	MAIN SWGR: SEE RISER DIAGRAM. RECONNECT BRANCH CIRCUITS REMOVED AND PROTECTED DURING DEMOLITION.
7	GENERATOR AND MTS: GENERATOR AND MTS IS THE PROPERTY OF NEW HANOVER COUNTY. PROTECT GENERATOR IN PLACE, REMOVE MTS AND DELIVER TO NEW HANOVER COUNTY SCHOOLS FOR STORAGE. NEW HANOVER COUNTY SCHOOLS WILL DELIVER TO NEW HANOVER COUNTY AT A LATER DATE.

ALTERNATE KEYED NOTES	
A3.1	ELECTRICAL CONTRACTOR SHALL PROVIDE RECEPTACLE AND FACEPLATE IN EXISTING BOX, CONNECT TO EXISTING CIRCUIT REMOVED AND PROTECTED DURING DEMOLITION.
A3.2	ELECTRICAL CONTRACTOR SHALL PROVIDE GFCI RECEPTACLE AND FACEPLATE IN EXISTING BOX, CONNECT TO EXISTING CIRCUIT REMOVED AND PROTECTED DURING DEMOLITION.
A4.1	PROJECTOR: EXISTING PROJECTOR CEILING PAN STORED DURING DEMOLITION SHALL BE LOCATED AS SHOWN. CONNECT EXISTING RECEPTABLE IN PROJECTOR CEILING PAN TO EXISTING RECEPTACLE CIRCUIT PROTECTED DURING DEMOLITION.

NOTE: IF ALTERNATE TAKEN TO INSTALL INTERACTIVE FLAT PANEL DISPLAY, PRIOR TO ANY ROUGH-IN AND INSTALLATION THE ELECTRICAL CONTRACTOR SHALL COORDINATE WITH NEW HANOVER COUNTY SCHOOLS AND GET APPROVAL FOR ALL FINAL LOCATIONS OF INTERACTIVE FLAT PANEL DISPLAYS AND TEACHER DESKS IN EACH CLASSROOM.

NOTE	
1.	ELECTRICAL CONTRACTOR SHALL SECURE ALL CABLES, CONDUIT AND BOXES LOCATED ABOVE CEILING IN PLACE THAT ARE TO REMAIN OR TO BE REUSED AND FASTENED PER NEC.
2.	ELECTRICAL CONTRACTOR SHALL REMOVE ALL ABANDONED SURFACE MOUNTED RACEWAY ON WALLS AND FLOORS.
3.	ATTEMPT HAS BEEN MADE TO LOCATE AND SHOW ALL RECEPTACLE AND DATA DEVICES ON THESE PLANS AND ARE BELIEVED TO BE CORRECT. NOTWITHSTANDING, THE CONTRACTOR SHALL VERIFY ALL DEVICE LOCATIONS, CIRCUITS, AND WIRING ASSOCIATED WITH WORK FOR THIS PROJECT AND REPLACE ALL DEVICES EVEN IF NOT INDICATED ON PLANS.

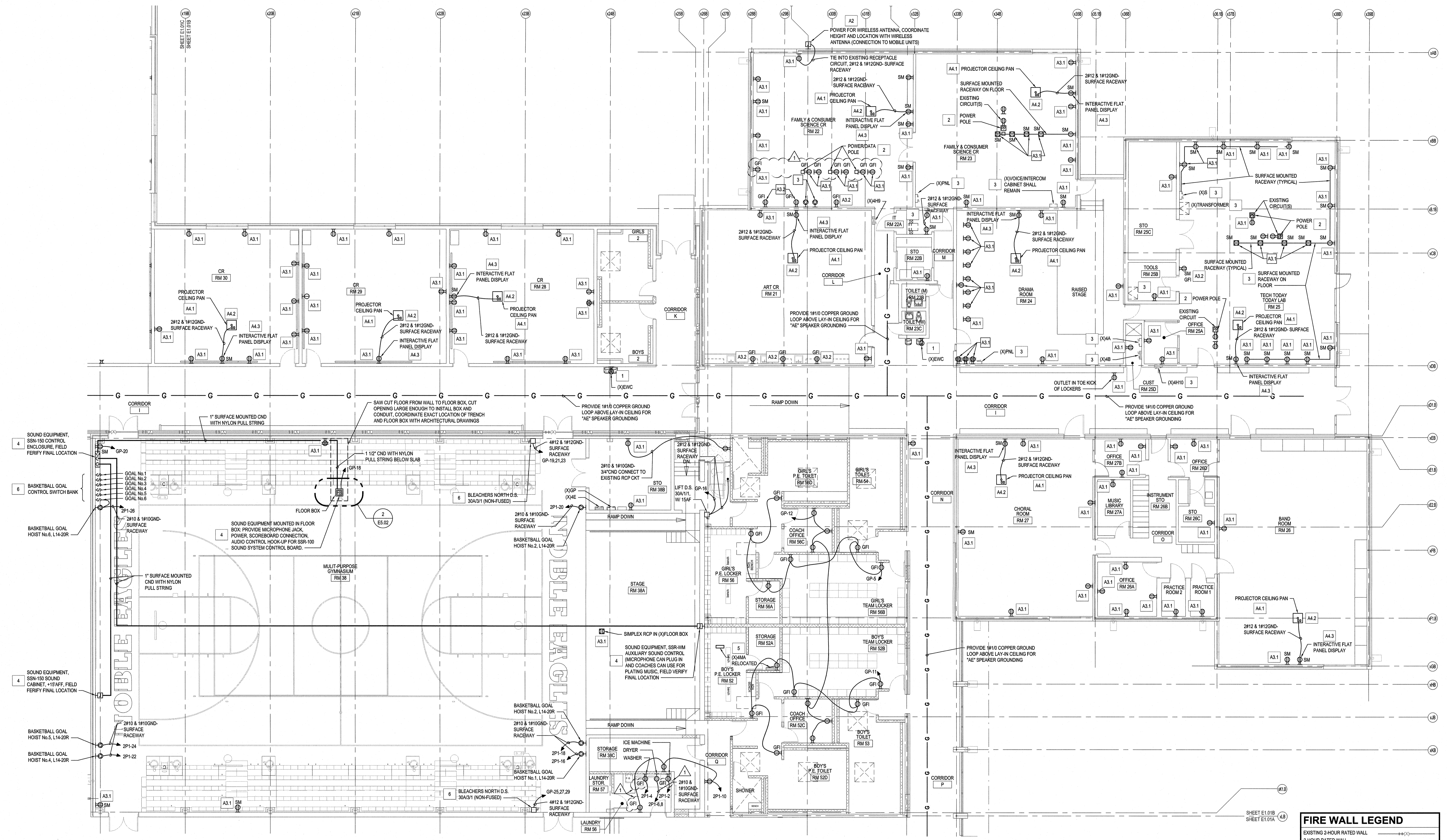
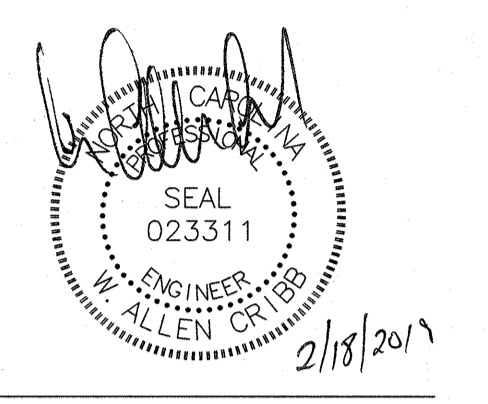
FIRE WALL LEGEND	
EXISTING 2-HOUR RATED WALL	---
2-HOUR RATED WALL	---



Renovations to:
M.C.S. Noble Middle School
 6520 Market Street
 Wilmington, North Carolina 28405

POWER FLOOR PLAN -
 AREA A

JOB NUMBER
 18005
 DRAWN BY
 GH
 CHECKED BY
 WAC
 DATE
 02-04-2019
 REVISIONS
 ADDENDUM #1: DEPARTMENT
 OF PUBLIC INSTRUCTION
 RESPONSE 2-18-2019



KEYED NOTES THIS SHEET ONLY

- 1 EWC: ELECTRICAL CONTRACTOR SHALL TRACE EXISTING EWC CIRCUIT AND REPLACE BREAKER WITH GFI BREAKER. PROVIDE DUPLEX RECEPTACLE AND PROVIDE ALL NEW CONDUCTORS FROM GFI BREAKER TO RECEPTACLE. NEUTRAL CONDUCTORS SHALL BE DEDICATED PER BREAKER AND NOT SHARED.
- 2 POWER POLE: CONNECT RECEPTACLES TO CONDUCTORS REMOVED AND PROTECTED ABOVE CEILING DURING DEMOLITION.
- 3 EQUIPMENT: EQUIPMENT SHALL BE OPERATIONAL AFTER DEMOLITION AND CONSTRUCTION. RECEPTACLE CIRCUITS SHALL REMAIN AS CIRCUITED PRIOR TO DEMOLITION UNLESS SPECIFICALLY NOTED OTHERWISE.
- 4 SOUND EQUIPMENT: SOUND SYSTEM PURCHASED BY NEW HANOVER COUNTY. SYSTEM SHALL BE WIRELESS WITH REDUNDANT HARDWARE CONNECTIONS SIMILAR TO DAKTRONICS. SOUND SYSTEM AND ALL HARDWARE CONNECTIONS AND RACEWAY SHALL BE INSTALLED BY THE AV CONTRACTOR.
- 5 (X)PANEL 4MA: REWORK EXISTING FEEDER CONDUIT AND CONDUCTORS TO ROUTE TO NEW LOCATION OF PANEL 4MA. SEE PLAN ON SHEET E1.01B. PROVIDE JUNCTION BOX ABOVE CEILING AS REQUIRED TO EXTEND BRANCH CIRCUIT CONDUIT AND CONDUCTORS TO PANEL 4MA NEW LOCATION. SEE RISER DIAGRAM.
- 6 INTERCONNECT BLEACHER CONTROLS AND CROSS-COURT BACKBOARDS SUCH THAT WHEN BLEACHERS ARE EXTENDED CROSS-COURT BACKBOARDS CANNOT BE LOWERED AND WHEN BACKBOARDS ARE LOWERED, BLEACHERS CANNOT BE EXTENDED. PROVIDE ALL RELAYS, CONTACTS AND WIRING REQUIRED TO PROVIDE

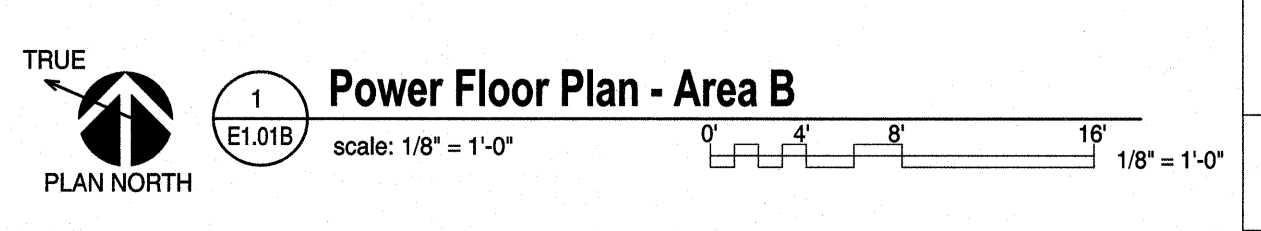
ALTERNATE KEYED NOTES

- A2 MOBILE LATE DEMOLITION SYSTEMS (SOUND SYSTEMS, BLEACHERS, LIFT D.S., BOYS TOILET, GIRLS TOILET) DISTRIBUTION PANEL, FIRE ALARM, SECURITY, DATA, PA, ETC.
- A3.1 ELECTRICAL CONTRACTOR SHALL PROVIDE RECEPTACLE AND FACEPLATE IN EXISTING BOX. CONNECT TO EXISTING CIRCUIT REMOVED AND PROTECTED DURING DEMOLITION.
- A3.2 ELECTRICAL CONTRACTOR SHALL PROVIDE GFCI RECEPTACLE AND FACEPLATE IN EXISTING BOX. CONNECT TO EXISTING CIRCUIT REMOVED AND PROTECTED DURING DEMOLITION.
- A4.1 EXISTING PROJECTOR CEILING PAN STORED DURING DEMOLITION SHALL BE LOCATED AS SHOWN. CONNECT EXISTING RECEPTACLE IN PROJECTOR CEILING PAN TO EXISTING RECEPTACLE CIRCUIT PROTECTED DURING DEMOLITION. SEE DETAIL 4, SHEET E5.02.
- A4.2 EA SPEAKER LOCATE SPEAKER LOCATION INDICATED. CONNECT SPEAKER CABLE FROM 3 SMM JACK LOCATED IN SURFACE BOX AT TEACHERS STATION. POWER SPEAKER FROM RECEPTACLE MOUNTED IN PROJECTOR CEILING PAN. SEE DETAIL 4, SHEET E5.02.
- A4.3 INTERACTIVE FLAT PANEL DISPLAY: PROVIDE SURFACE MOUNTED DUPLEX RECEPTACLE ABOVE SCREEN. SEE DETAIL 4, SHEET E5.02.

NOTE: IF ALTERNATE TAKEN TO INSTALL INTERACTIVE FLAT PANEL DISPLAY. PRIOR TO ANY ROUGH-IN AND INSTALLATION THE ELECTRICAL CONTRACTOR SHALL COORDINATE WITH NEW HANOVER COUNTY SCHOOLS AND GET APPROVAL FOR ALL FINAL LOCATIONS OF INTERACTIVE FLAT PANEL DISPLAYS AND TEACHER DESKS IN EACH CLASSROOM.

NOTE

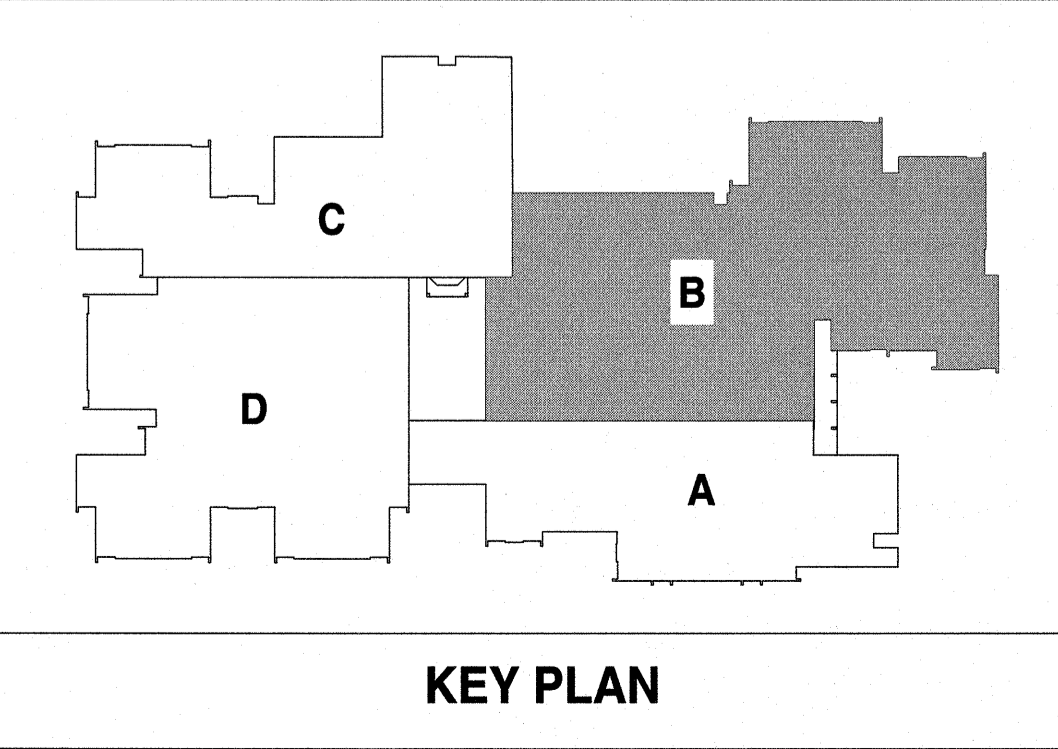
1. ELECTRICAL CONTRACTOR SHALL SECURE ALL CABLES, CONDUIT AND BOXES LOCATED ABOVE CEILING IN PLACE THAT ARE TO REMAIN OR TO BE REUSED AND FASTENED PER NEC.
2. ELECTRICAL CONTRACTOR SHALL REMOVE ALL ABANDONED SURFACE MOUNTED RACEWAY ON WALLS AND FLOORS.
3. ATTEMPT HAS BEEN MADE TO LOCATE AND SHOW ALL RECEPTACLE AND DATA DEVICES ON THESE PLANS AND ARE BELIEVED TO BE CORRECT. NOTWITHSTANDING, THE CONTRACTOR SHALL VERIFY ALL DEVICE LOCATIONS, CIRCUITS, AND WIRING ASSOCIATED WITH WORK FOR THIS PROJECT AND REPLACE ALL DEVICES EVEN IF NOT INDICATED ON PLANS.



FIRE WALL LEGEND

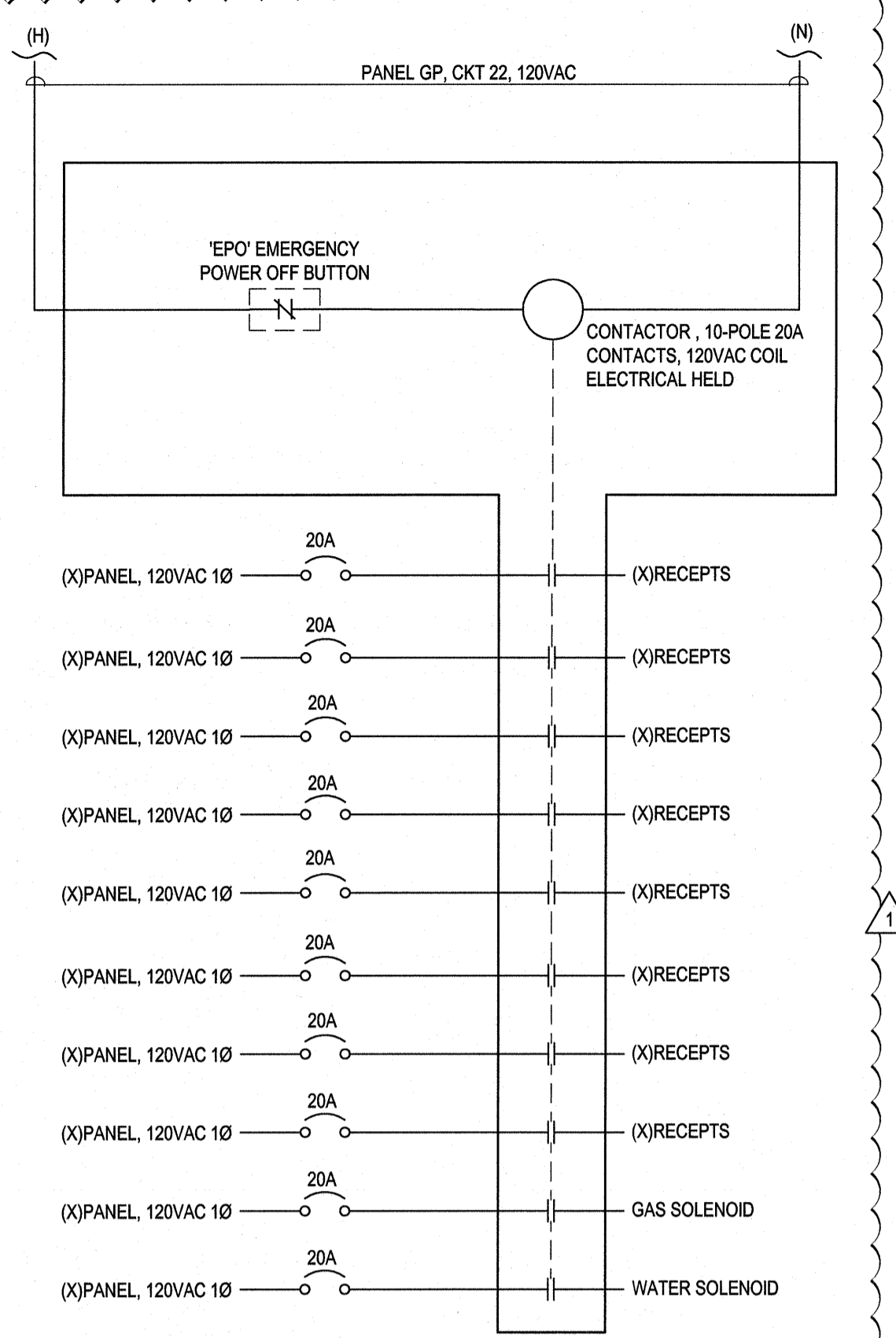
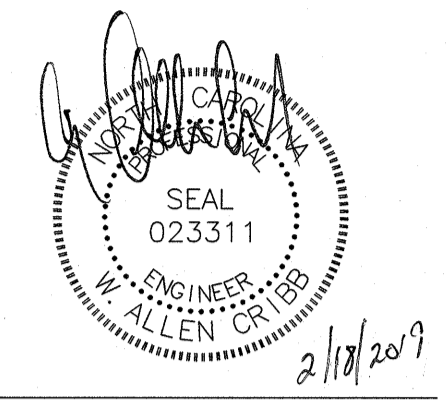
EXISTING 2-HOUR RATED WALL

2-HOUR RATED WALL

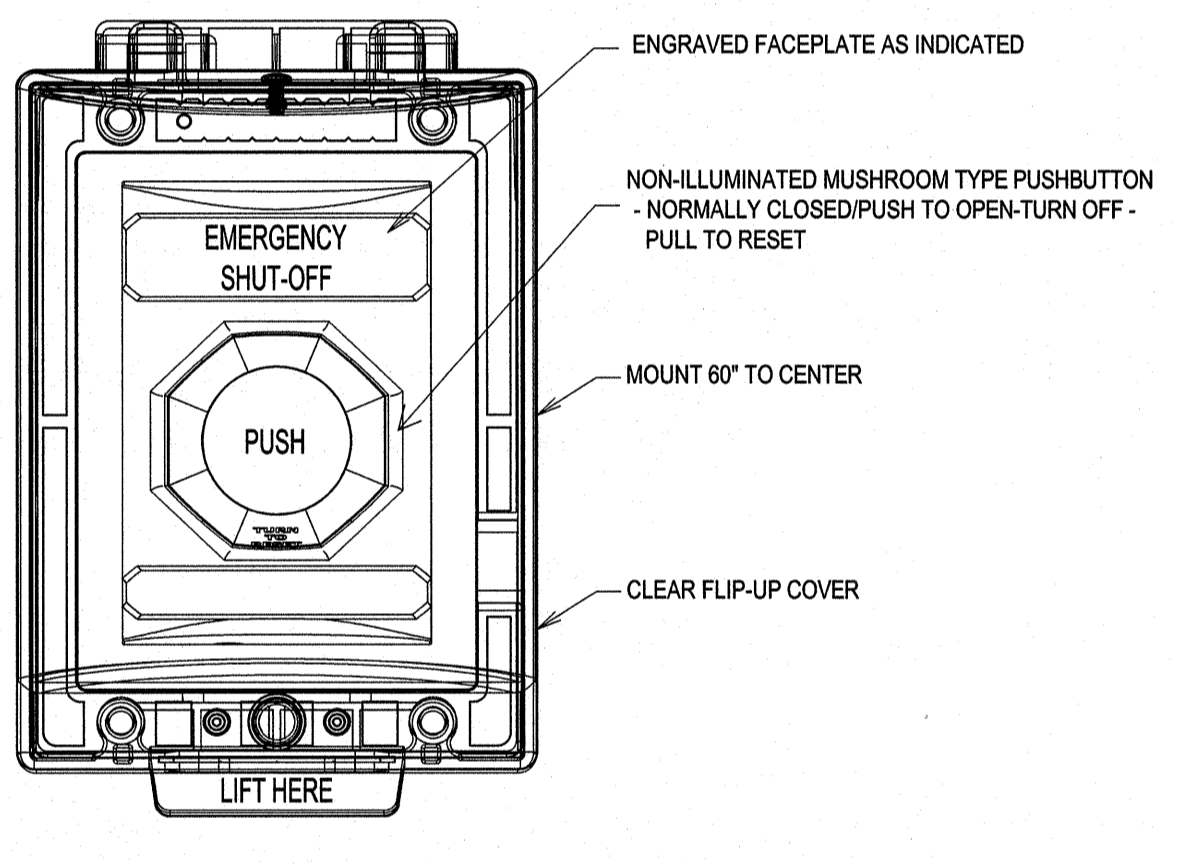


Renovations to:
M.C.S. Noble Middle School
 6520 Market Street
 Wilmington, North Carolina 28405

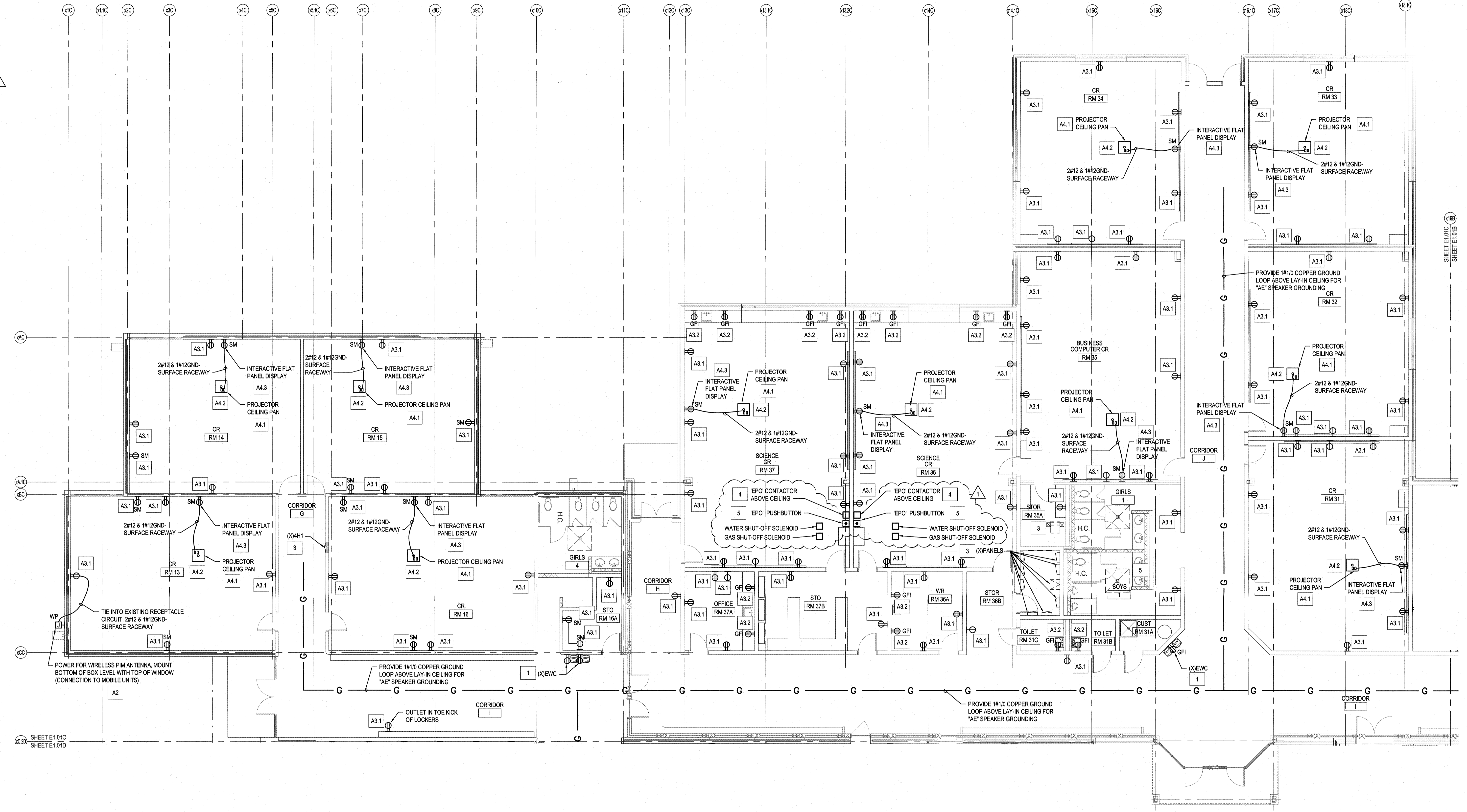
POWER FLOOR PLAN - AREA B
 JOB NUMBER 19005
 DRAWN BY HGH
 CHECKED BY WAC
 DATE 02-04-2019
 REVISIONS
 ADDENDUM #1: DEPARTMENT OF PUBLIC INSTRUCTION RESPONSE 2-18-2019
 SHEET NUMBER **E1.01B**



EPO CONTACTOR, CLASSROOMS CR36, CR37, CR9, CR10, CR11 and CR12
2
E1.01C Not To Scale



EMERGENCY POWER OFF "EPO" BUTTON DETAIL
3
E1.01C Not To Scale



KEYED NOTES THIS SHEET ONLY

- 1 EWC - ELECTRICAL CONTRACTOR SHALL TRACE EXISTING EWC CIRCUIT AND REPLACE BREAKER WITH GFI BREAKER. PROVIDE DUPLEX RECEPTACLE AND NEW CONDUCTORS. NEUTRAL CONDUCTORS SHALL BE DEDICATED PER BREAKER AND NOT SHARED.
- 2 NOT USED
- 3 EQUIPMENT: EQUIPMENT SHALL BE OPERATIONAL AFTER DEMOLITION AND CONSTRUCTION.
- 4 EPO CONTACTOR: EXISTING RECEPTACLE CIRCUITS, WATER AND GAS SHUT-OFF SOLENOIDS SHALL BE ROUTED THROUGH EPO CONTACTOR LOCATED ABOVE CEILING. ELECTRICAL CONTRACTOR SHALL VERIFY EXISTING CIRCUITS. SEE DETAIL 2, E1.01C
- 5 EPO PUSHBUTTON: SEE DETAIL 3, SHEET E1.01C FIELD VERIFY EXACT LOCATION WITH ARCHITECT/TOWNER.

ALTERNATE KEYED NOTES

- A2 MOBILE UNITS: ALL INFRASTRUCTURE INCLUDING BUT NOT LIMITED TO UTILITY POWER, DISTRIBUTION PANEL, FIRE ALARM, SECURITY, DATA, PA ETC.
- A3.1 ELECTRICAL CONTRACTOR SHALL PROVIDE RECEPTACLE AND FACEPLATE IN EXISTING BOX, CONNECT TO EXISTING CIRCUIT REMOVED AND PROTECTED DURING DEMOLITION.
- A3.2 ELECTRICAL CONTRACTOR SHALL PROVIDE GFCI RECEPTACLE AND FACEPLATE IN EXISTING BOX, CONNECT TO EXISTING CIRCUIT REMOVED AND PROTECTED DURING DEMOLITION.
- A4.1 EXISTING PROJECTOR CEILING PAN STORED DURING DEMOLITION SHALL BE LOCATED AS SHOWN, CONNECT EXISTING RECEPTACLE IN PROJECTOR CEILING PAN TO EXISTING RECEPTACLE CIRCUIT PROTECTED DURING DEMOLITION SEE DETAIL 4, SHEET E5.02.
- A4.2 EA SPEAKER: LOCATE SPEAKER IN LOCATION INDICATED. CONNECT SPEAKER CABLE FROM 3.5MM JACK LOCATED IN SURFACE BOX AT TEACHERS STATION. POWER SPEAKER FROM RECEPTACLE MOUNTED IN PROJECTOR CEILING PAN. SEE DETAIL 4, SHEET E5.02.
- A4.3 INTERACTIVE FLAT PANEL DISPLAY: PROVIDE SURFACE MOUNTED DUPLEX RECEPTACLE ABOVE SCREEN, SEE DETAIL 4, SHEET E5.02.
- A4.4 INTERACTIVE FLAT PANEL DISPLAY: UTILIZE EXISTING SURFACE MOUNTED DUPLEX RECEPTACLE ABOVE SCREEN, ADJUST RECEPTACLE LOCATION TO ACCOMMODATE INTERACTIVE FLAT PANEL DISPLAY LOCATION, SEE DETAIL 4, SHEET E5.02.

NOTE: IF ALTERNATE TAKEN TO INSTALL INTERACTIVE FLAT PANEL DISPLAY, PRIOR TO ANY ROUGH-IN AND INSTALLATION THE ELECTRICAL CONTRACTOR SHALL COORDINATE WITH NEW HANOVER COUNTY SCHOOLS AND GET APPROVAL FOR ALL FINAL LOCATIONS OF INTERACTIVE FLAT PANEL DISPLAYS AND TEACHER DESKS IN EACH CLASSROOM.

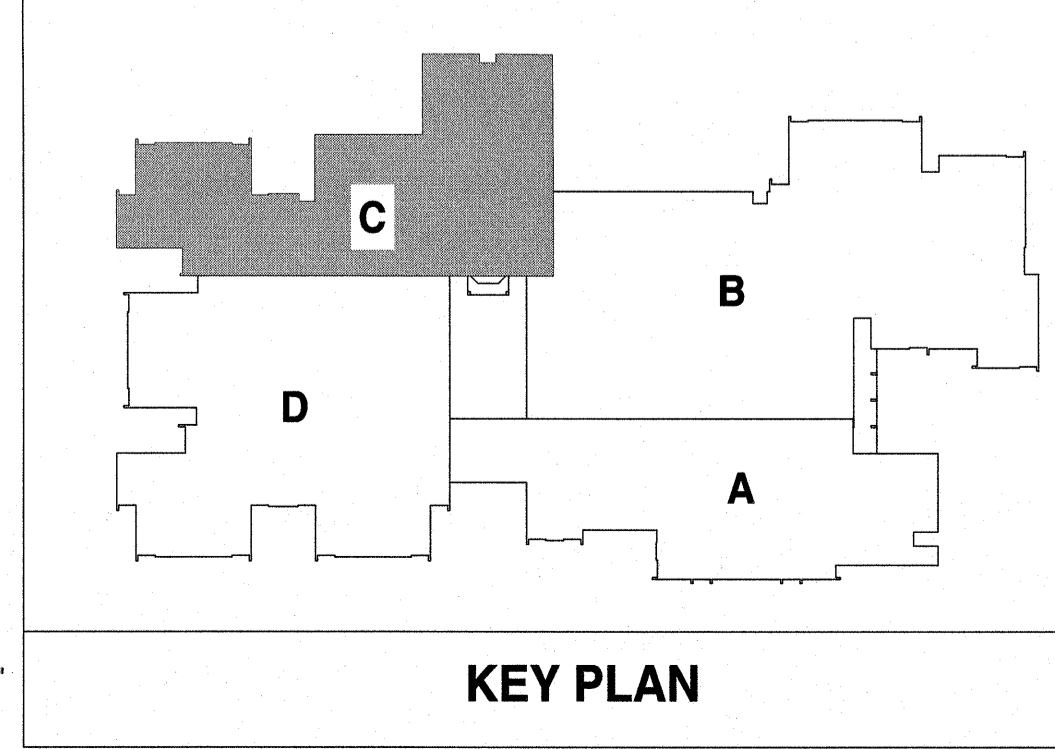
NOTE

1. ELECTRICAL CONTRACTOR SHALL SECURE ALL CABLES, CONDUIT AND BOXES LOCATED ABOVE CEILING IN PLACE THAT ARE TO REMAIN OR TO BE REUSED AND FASTENED PER NEC.
2. ELECTRICAL CONTRACTOR SHALL REMOVE ALL ABANDONED SURFACE MOUNTED RACEWAY ON WALLS AND FLOORS.
3. ATTEMPT HAS BEEN MADE TO LOCATE AND SHOW ALL RECEPTACLE AND DATA DEVICES ON THESE PLANS AND ARE BELIEVED TO BE CORRECT. NOTWITHSTANDING, THE CONTRACTOR SHALL VERIFY ALL DEVICE LOCATIONS, CIRCUITS, AND WIRING ASSOCIATED WITH WORK FOR THIS PROJECT AND REPLACE ALL DEVICES EVEN IF NOT INDICATED ON PLANS.

FIRE WALL LEGEND

EXISTING 2-HOUR RATED WALL ————

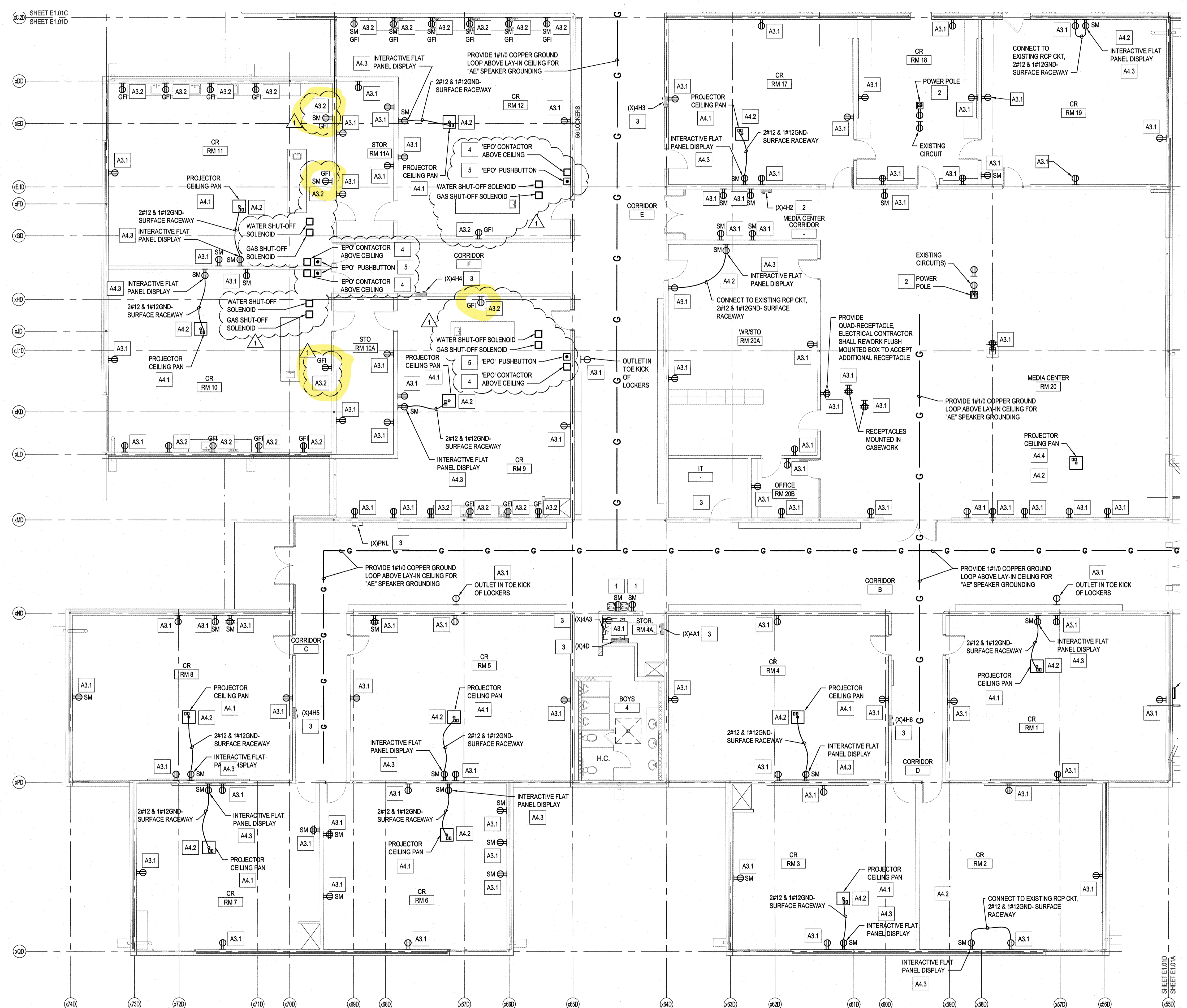
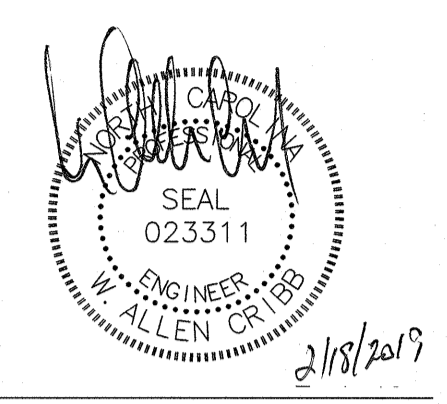
2-HOUR RATED WALL ————



Renovations to:
M.C.S. Noble Middle School
6520 Market Street
Wilmington, North Carolina 28405

POWER FLOOR PLAN - AREA C

JOB NUMBER: 18005
DRAWN BY: HGH
CHECKED BY: WAC
DATE: 02-04-2019
REVISIONS:
ADDENDUM #1: DEPARTMENT OF PUBLIC INSTRUCTION RESPONSE 2-18-2019

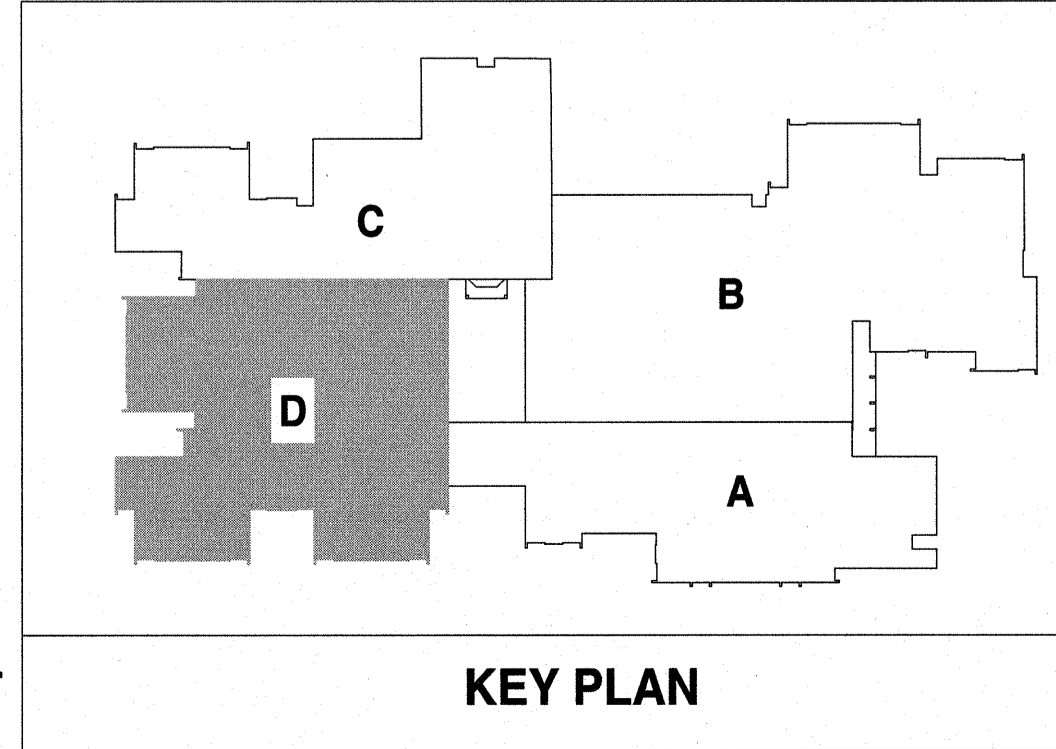


KEYED NOTES THIS SHEET ONLY	
1	EVC: ELECTRICAL CONTRACTOR SHALL TRACE EXISTING EVC CIRCUIT AND REPLACE BREAKER WITH GFI BREAKER, PROVIDE DUPLEX RECEPTACLE AND NEW CONDUCTORS. NEUTRAL CONDUCTORS SHALL BE DEDICATED PER BREAKER AND NOT SHARED.
2	POWER POLE: CONNECT RECEPTACLES TO CONDUCTORS REMOVED AND PROTECTED ABOVE CEILING DURING DEMOLITION.
3	EQUIPMENT: EQUIPMENT SHALL BE OPERATIONAL AFTER DEMOLITION AND CONSTRUCTION.
4	EPO CONTACTOR: EXISTING RECEPTACLE CIRCUITS, WATER AND GAS SHUT-OFF SOLENOIDS SHALL BE ROUTED THRU EPO CONTACTOR LOCATED ABOVE CEILING. ELECTRICAL CONTRACTOR SHALL VERIFY EXISTING CIRCUITS. SEE DETAIL 2, E1.01C
5	EPO PUSHBUTTON: SEE DETAIL 3, SHEET E1.01C FIELD VERIFY EXACT LOCATION WITH ARCHITECT/OWNER.

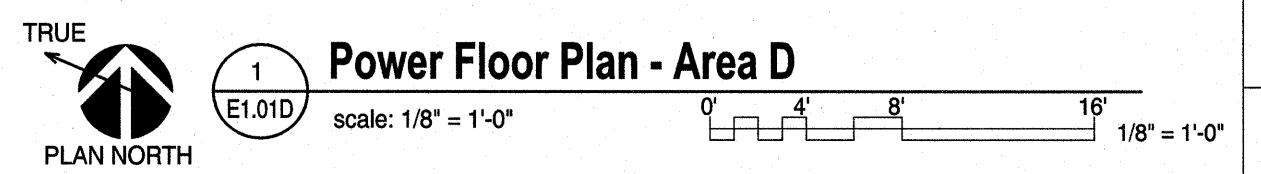
ALTERNATE KEYED NOTES	
A3.1	ELECTRICAL CONTRACTOR SHALL PROVIDE RECEPTACLE AND FACEPLATE IN EXISTING BOX, CONNECT TO EXISTING CIRCUIT REMOVED AND PROTECTED DURING DEMOLITION.
A3.2	ELECTRICAL CONTRACTOR SHALL PROVIDE GFCI RECEPTACLE AND FACEPLATE IN EXISTING BOX, CONNECT TO EXISTING CIRCUIT REMOVED AND PROTECTED DURING DEMOLITION.
A4.1	EXISTING PROJECTOR CEILING PAN STORED DURING DEMOLITION SHALL BE LOCATED AS SHOWN, CONNECT EXISTING RECEPTACLE IN PROJECTOR CEILING PAN TO EXISTING RECEPTACLE CIRCUIT PROTECTED DURING DEMOLITION SEE DETAIL 4, SHEET E5.02.
A4.2	EA SPEAKER: LOCATE SPEAKER IN LOCATION INDICATED, CONNECT SPEAKER CABLE FROM 3.5M JACK LOCATED IN SURFACE BOX AT TEACHERS STATION. POWER SPEAKER FROM RECEPTACLE MOUNTED IN PROJECTOR CEILING PAN, SEE DETAIL 4, SHEET E5.02.
A4.3	INTERACTIVE FLAT PANEL DISPLAY: PROVIDE SURFACE MOUNTED DUPLEX RECEPTACLE ABOVE SCREEN, SEE DETAIL 4, SHEET E5.02.
A4.4	PROJECTOR: EXISTING PROJECTOR CEILING PAN STORED DURING DEMOLITION SHALL BE LOCATED AS SHOWN, CONNECT EXISTING RECEPTACLE IN PROJECTOR CEILING PAN TO EXISTING RECEPTACLE CIRCUIT PROTECTED DURING DEMOLITION.

NOTE	
1.	ELECTRICAL CONTRACTOR SHALL SECURE ALL CABLES, CONDUIT AND BOXES LOCATED ABOVE CEILING IN PLACE THAT ARE TO REMAIN OR TO BE REUSED AND FASTENED PER NEC.
2.	ELECTRICAL CONTRACTOR SHALL REMOVE ALL ABANDONED SURFACE MOUNTED RACEWAY ON WALLS AND FLOORS.
3.	ATTEMPT HAS BEEN MADE TO LOCATE AND SHOW ALL RECEPTACLE AND DATA DEVICES ON THESE PLANS AND ARE BELIEVED TO BE CORRECT. NOTWITHSTANDING, THE CONTRACTOR SHALL VERIFY ALL DEVICE LOCATIONS, CIRCUITS, AND WIRING ASSOCIATED WITH WORK FOR THIS PROJECT AND REPLACE ALL DEVICES EVEN IF NOT INDICATED ON PLANS.

FIRE WALL LEGEND	
EXISTING 2-HOUR RATED WALL	
2-HOUR RATED WALL	



NOTE: IF ALTERNATE TAKEN TO INSTALL INTERACTIVE FLAT PANEL DISPLAY, PRIOR TO ANY ROUGH-IN AND INSTALLATION THE ELECTRICAL CONTRACTOR SHALL COORDINATE WITH NEW HANOVER COUNTY SCHOOLS AND GET APPROVAL FOR ALL FINAL LOCATIONS OF INTERACTIVE FLAT PANEL DISPLAYS AND TEACHER DESKS IN EACH CLASSROOM.

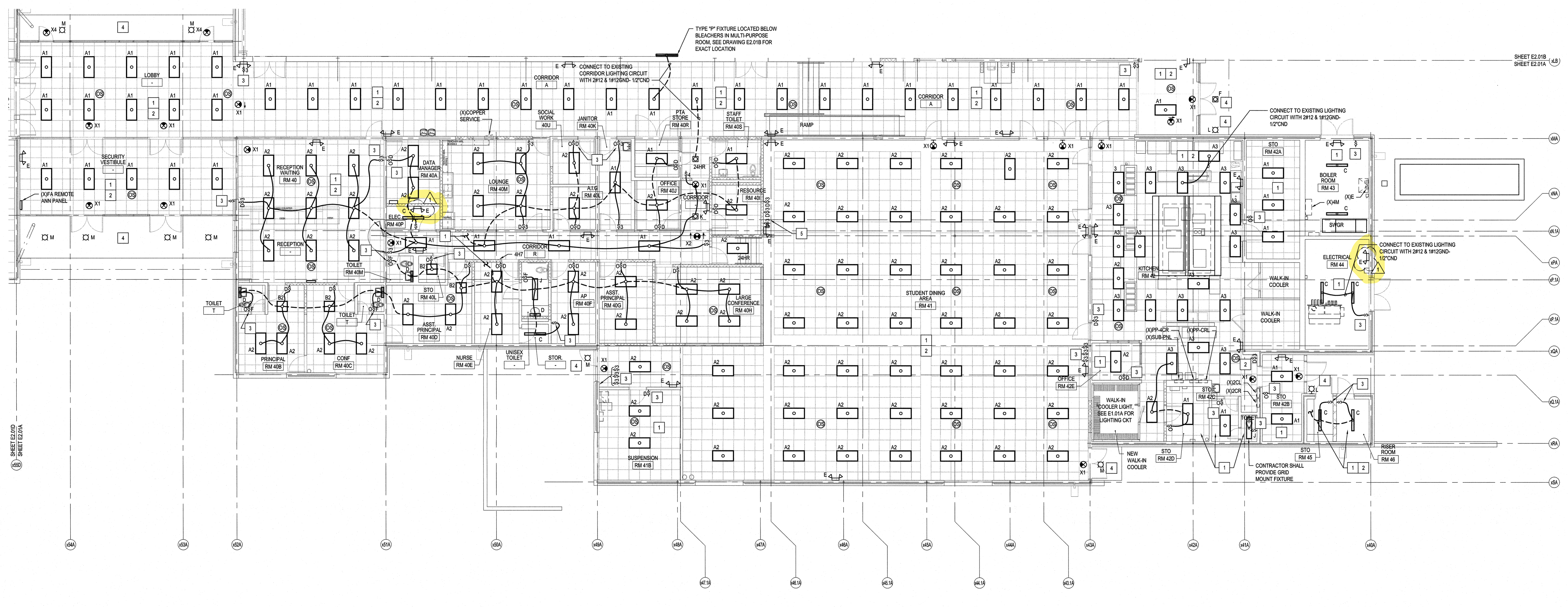
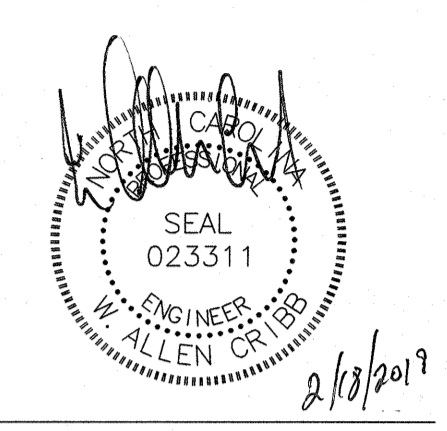


Renovations to:
M.C.S. Noble Middle School
 6520 Market Street
 Wilmington, North Carolina 28405

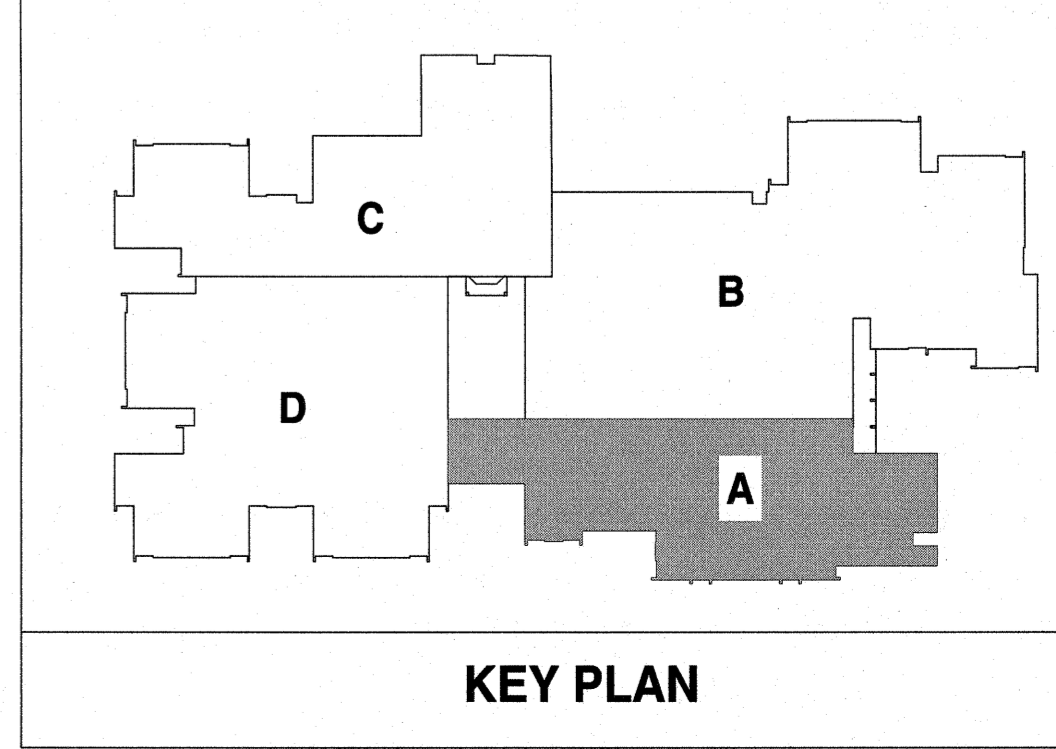
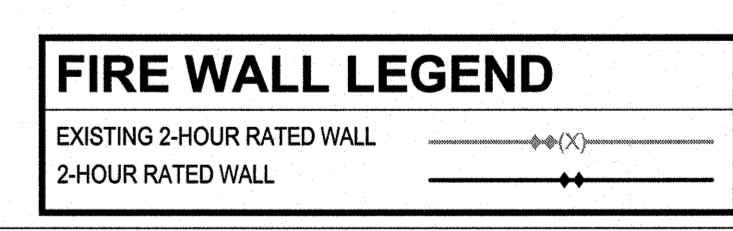
POWER FLOOR PLAN -
 AREA D

JOB NUMBER
18005
 DRAWN BY
HGH
 CHECKED BY
WAC
 DATE
02-04-2019
 REVISIONS
 ADDENDUM #1: DEPARTMENT
OF PUBLIC INSTRUCTION
RESPONSE 2-18-2019

SHEET NUMBER
E1.01D



- KEYED NOTES**
- 1 INTERIOR LIGHTS: CONNECT FIXTURES TO EXISTING LIGHTING CIRCUIT UTILIZED PRIOR TO DEMOLITION IN EACH AREA.
 - 2 POWER SUPPLY(S) AND OCC SENSOR(S): SEE DETAILS ON E-03 FOR CONNECTION DIAGRAMS. CONTRACTOR SHALL PROVIDE A LABEL ON THE CEILING GRID T-BAR IDENTIFYING THE LOCATION ABOVE FOR LIGHTING CONTROL COMPONENTS. COORDINATE LABEL TYPE AND COLOR WITH ARCHITECT.
 - 3 SWITCH: UTILIZE EXISTING CONDUIT AND FLUSH MOUNTED BOX FOR INSTALLATION OF LV SWITCH AND CABLE. SEE DETAILS ON E-03 FOR SWITCHING DIAGRAMS. CONTRACTOR SHALL PROVIDE A LABEL ON THE CEILING GRID T-BAR IDENTIFYING THE LOCATION ABOVE FOR LIGHTING CONTROL COMPONENTS. COORDINATE LABEL TYPE AND COLOR WITH ARCHITECT.
 - 4 EXTERIOR EGRESS LIGHT: CONNECT TO EXISTING LIGHTING CKT PROTECTED DURING DEMOLITION. PROVIDE 2#12 & 1#12GND EXISTING CONDUIT. PROVIDE 3/4\"/>
 - 5 SWITCH BANK: CONNECT SWITCHES TO MATCH SWITCHING SCHEME PRIOR TO DEMOLITION.



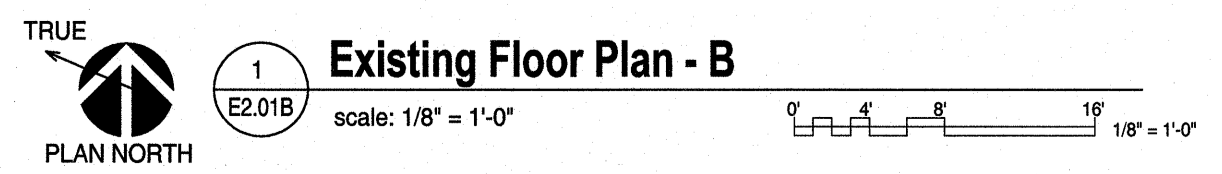
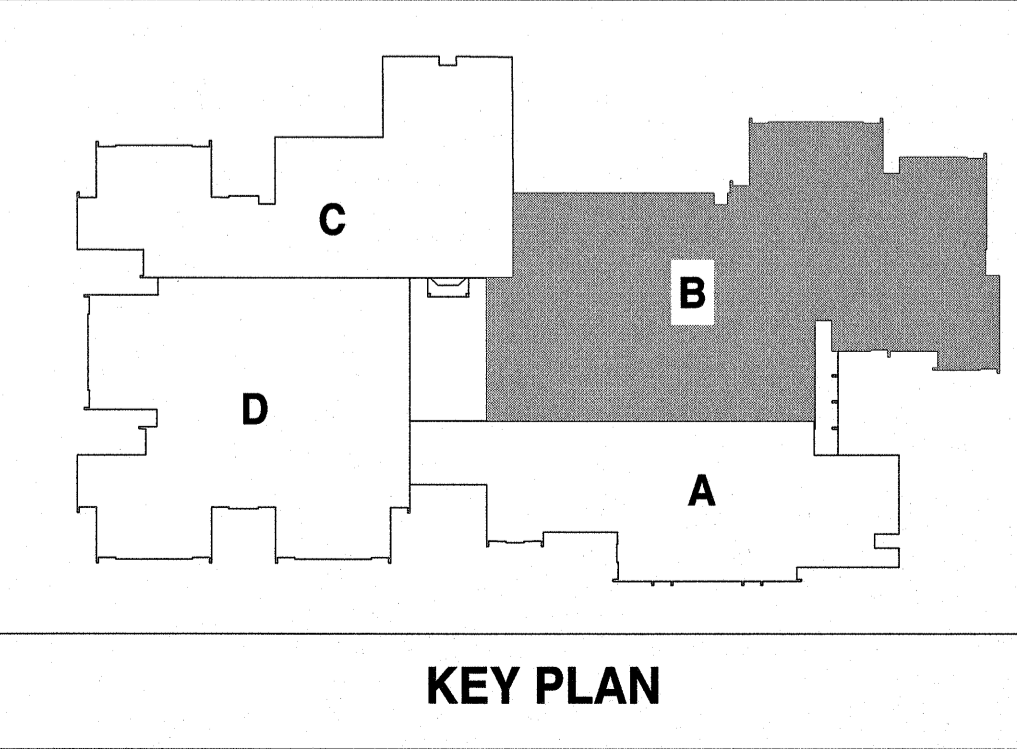
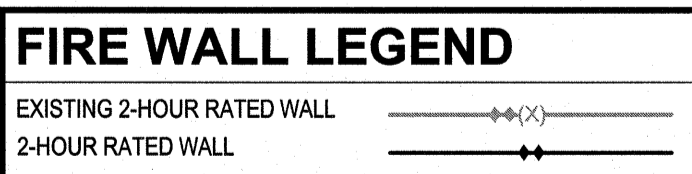
Renovations to:
M.C.S. Noble Middle School
 6520 Market Street
 Wilmington, North Carolina 28405

ELECTRICAL
 LIGHTING FLOOR PLAN -
 AREA A

JOB NUMBER: 18005
 DRAWN BY: GH
 CHECKED BY: WAC
 DATE: 02-04-2019
 REVISIONS:
 ADDENDUM #1: DEPARTMENT OF PUBLIC INSTRUCTION RESPONSE 2-18-2019



- KEYED NOTES**
- INTERIOR LIGHTS: CONNECT FIXTURES TO EXISTING LIGHTING CIRCUIT UTILIZED PRIOR TO DEMOLITION IN EACH AREA.
 - POWER SUPPLIES AND OCC SENSOR(S): SEE DETAILS ON E.03 FOR CONNECTION DIAGRAMS. CONTRACTOR SHALL PROVIDE A LABEL ON THE CEILING GRID T-BAR IDENTIFYING THE LOCATION ABOVE FOR LIGHTING CONTROL COMPONENTS. COORDINATE LABEL TYPE AND COLOR WITH ARCHITECT.
 - SWITCH: UTILIZE EXISTING CONDUIT AND FLUSH MOUNTED BOX FOR INSTALLATION OF LV SWITCH AND CABLE. SEE DETAILS ON E.03 FOR SWITCHING DIAGRAMS. PROVIDE BLANK PLATE COVER ON BOXES NO LONGER IN USE OR NEEDED. CONTRACTOR SHALL PROVIDE A LABEL ON THE CEILING GRID T-BAR IDENTIFYING THE LOCATION ABOVE FOR LIGHTING CONTROL COMPONENTS. COORDINATE LABEL TYPE AND COLOR WITH ARCHITECT.
 - EXTERIOR EGRESS LIGHT: CONNECT TO EXISTING LIGHTING CKT PROTECTED DURING DEMOLITION. PROVIDE 2#12 & 1#12GND EXISTING CONDUIT. PROVIDE 3/4\"/>



Renovations to:
M.C.S. Noble Middle School
6520 Market Street
Wilmington, North Carolina 28405

ELECTRICAL FLOOR PLAN -
AREA B

JOB NUMBER
18005
DRAWN BY
GHM
CHECKED BY
WAC
DATE
02-04-2019
REVISIONS
ADDENDUM #1: DEPARTMENT
OF PUBLIC INSTRUCTION
RESPONSE 2-18-2019

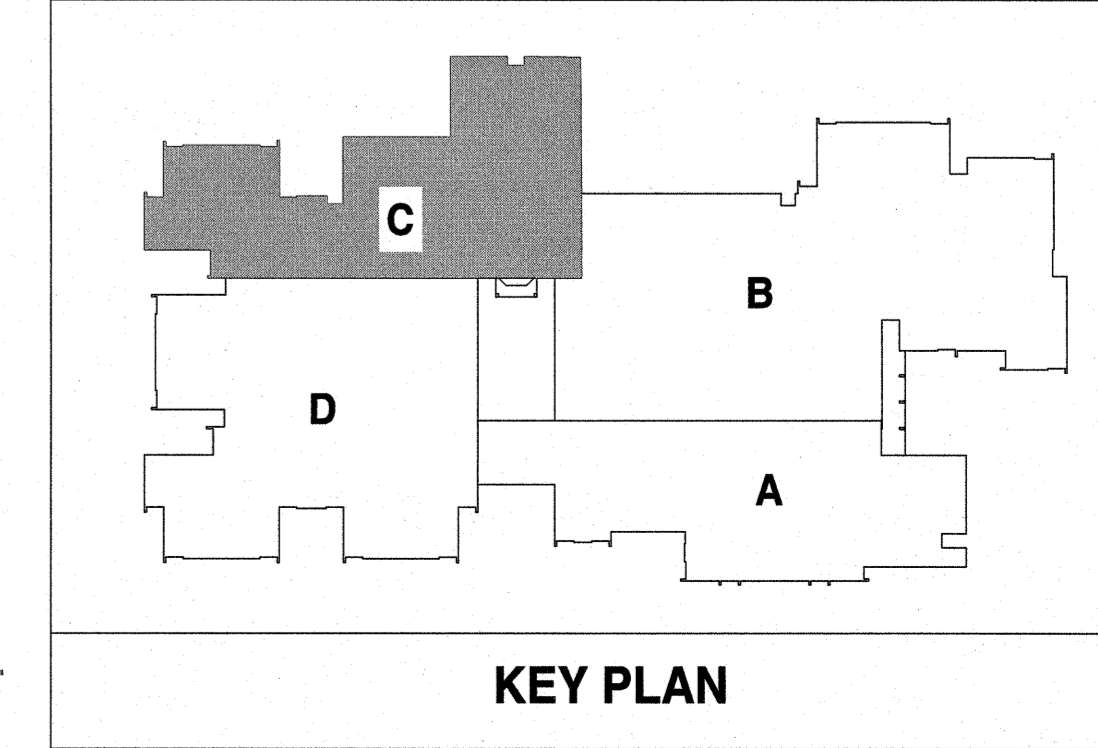
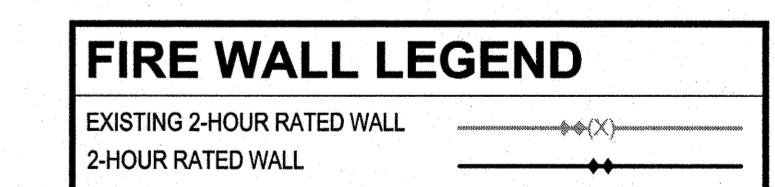
SHEET NUMBER
E2.01B



SHEET E2.01C
SHEET E2.01D

SHEET E2.01C
SHEET E2.01B

- KEYED NOTES**
- 1 INTERIOR LIGHTS: CONNECT FIXTURES TO EXISTING LIGHTING CIRCUIT UTILIZED PRIOR TO DEMOLITION IN EACH AREA.
 - 2 POWER SUPPLY(S) AND OCC SENSOR(S): SEE DETAILS ON E.03 FOR CONNECTION DIAGRAMS. CONTRACTOR SHALL PROVIDE A LABEL ON THE CEILING GRID T-BAR IDENTIFYING THE LOCATION ABOVE FOR LIGHTING CONTROL COMPONENTS. COORDINATE LABEL TYPE AND COLOR WITH ARCHITECT.
 - 3 SWITCH: UTILIZE EXISTING CONDUIT AND FLUSH MOUNTED BOX FOR INSTALLATION OF LV SWITCH AND CABLE. SEE DETAILS ON E.03 FOR SWITCHING DIAGRAMS. CONTRACTOR SHALL PROVIDE A LABEL ON THE CEILING GRID T-BAR IDENTIFYING THE LOCATION ABOVE FOR LIGHTING CONTROL COMPONENTS. COORDINATE LABEL TYPE AND COLOR WITH ARCHITECT.
 - 4 EXTERIOR EGRESS LIGHT: CONNECT TO EXISTING LIGHTING OUT PROTECTED DURING DEMOLITION, PROVIDE 2#12 & #12 GND EXISTING CONDUIT. PROVIDE 3/4" CONDUIT WHERE REQUIRED FOR NEW FIXTURES

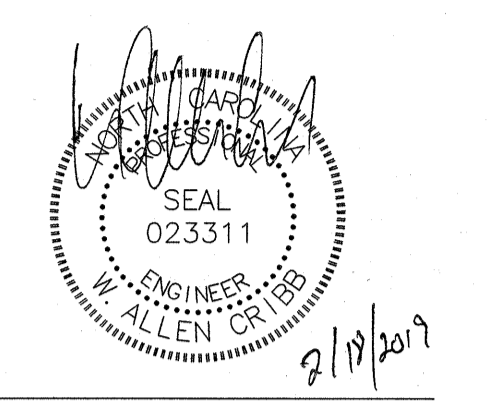


Renovations to:
M.C.S. Noble Middle School
6520 Market Street
Wilmington, North Carolina 28405

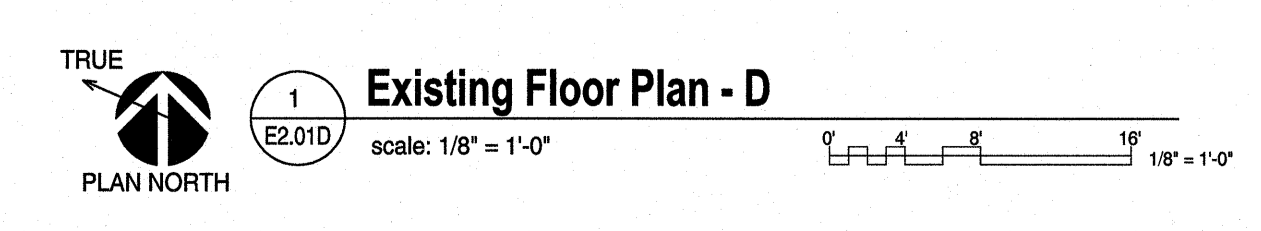
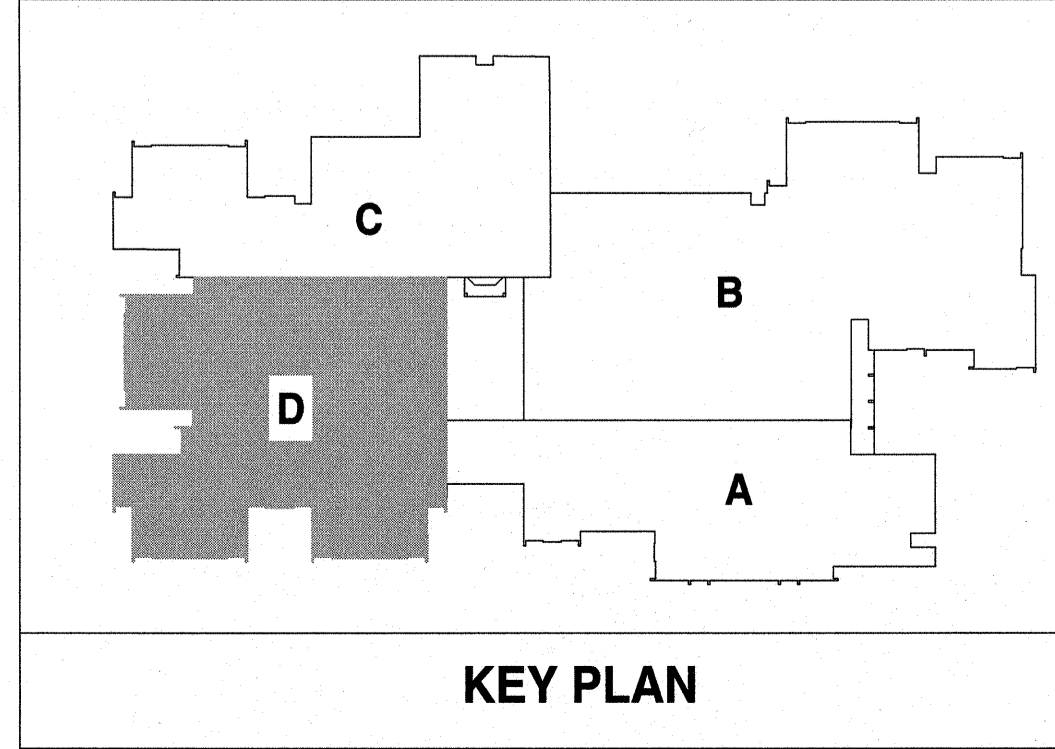
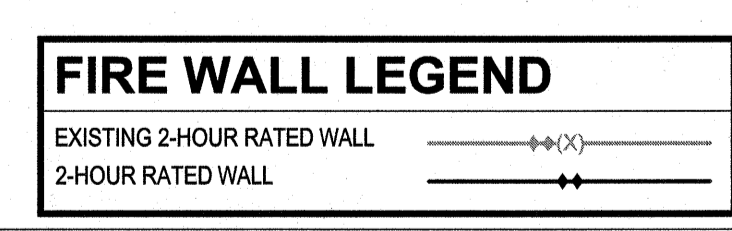
ELECTRICAL LIGHTING
FLOOR PLAN -
AREA C

JOB NUMBER
18005
DRAWN BY
HGH
CHECKED BY
WAC
DATE
02-04-2019
REVISIONS
ADDENDUM #1: DEPARTMENT
OF PUBLIC INSTRUCTION
RESPONSE 2-18-2019

SHEET NUMBER
E2.01C



- KEYED NOTES**
- 1 INTERIOR LIGHTS: CONNECT FIXTURES TO EXISTING LIGHTING CIRCUIT UTILIZED PRIOR TO DEMOLITION IN EACH AREA.
 - 2 POWER SUPPLY(S) AND OCC SENSOR(S): SEE DETAILS ON E.03 FOR CONNECTION DIAGRAMS. CONTRACTOR SHALL PROVIDE A LABEL ON THE CEILING GRID T-BAR IDENTIFYING THE LOCATION ABOVE FOR LIGHTING CONTROL COMPONENTS. COORDINATE LABEL TYPE AND COLOR WITH ARCHITECT.
 - 3 SWITCH: UTILIZE EXISTING CONDUIT AND FLUSH MOUNTED BOX FOR INSTALLATION OF LV SWITCH AND CABLE. SEE DETAILS ON E.03 FOR SWITCHING DIAGRAMS. CONTRACTOR SHALL PROVIDE A LABEL ON THE CEILING GRID T-BAR IDENTIFYING THE LOCATION ABOVE FOR LIGHTING CONTROL COMPONENTS. COORDINATE LABEL TYPE AND COLOR WITH ARCHITECT.
 - 4 EXTERIOR EGRESS LIGHT: CONNECT TO EXISTING LIGHTING CKT PROTECTED DURING DEMOLITION, PROVIDE 2#12 & 1#12GND EXISTING CONDUIT. PROVIDE 3/4" CONDUIT WHERE REQUIRED FOR NEW FIXTURES.

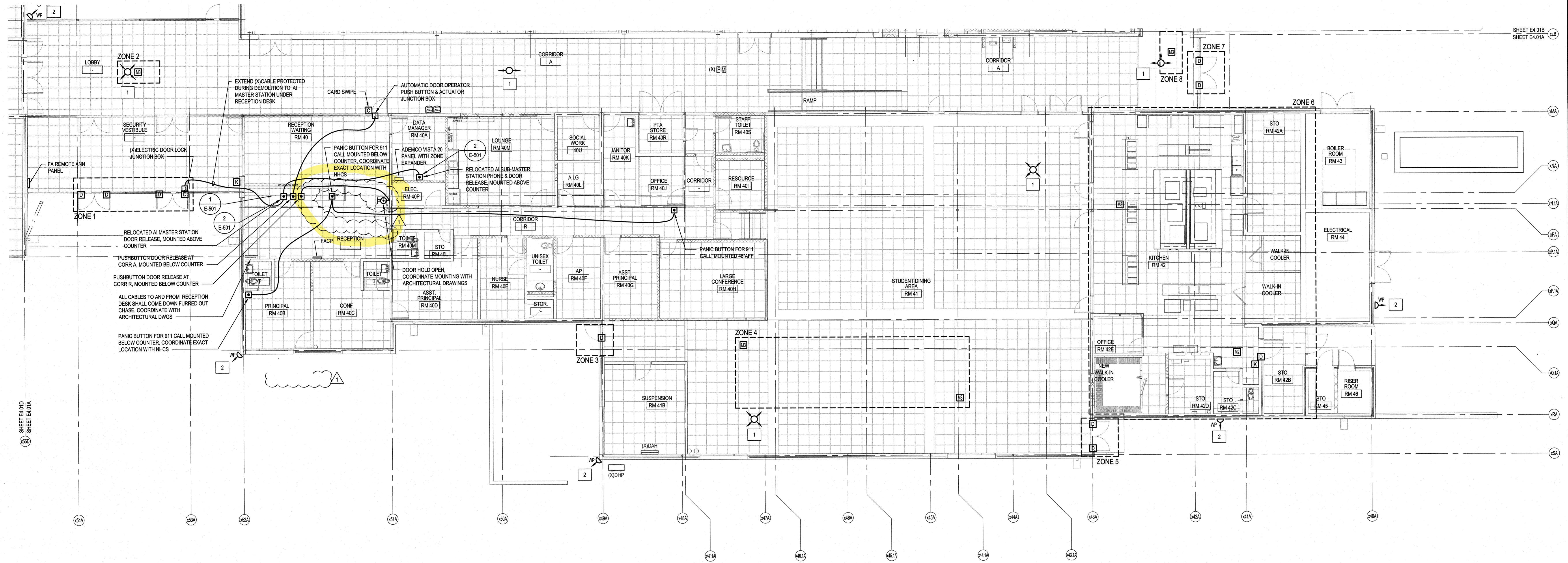
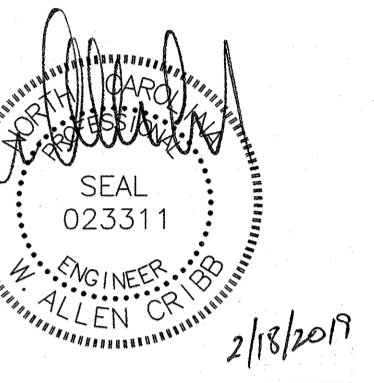


Renovations to:
M.C.S. Noble Middle School
 6520 Market Street
 Wilmington, North Carolina 28405

ELECTRICAL LIGHTING FLOOR PLAN - AREA D

JOB NUMBER 18005
 DRAWN BY HGH
 CHECKED BY WAC
 DATE 02-04-2019
 REVISIONS
 ADDENDUM #1: DEPARTMENT OF PUBLIC INSTRUCTION RESPONSE 2-18-2019

SHEET NUMBER
E2.01D

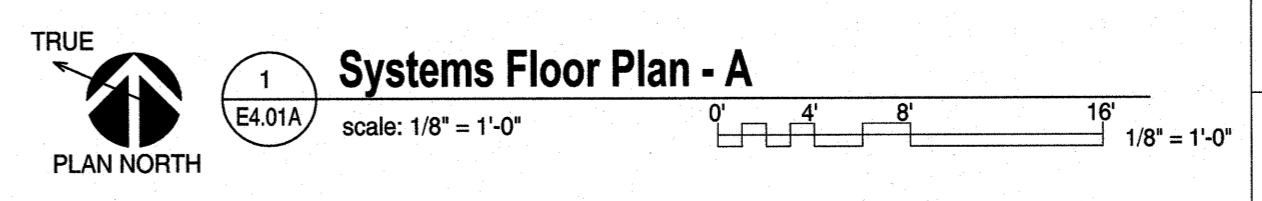
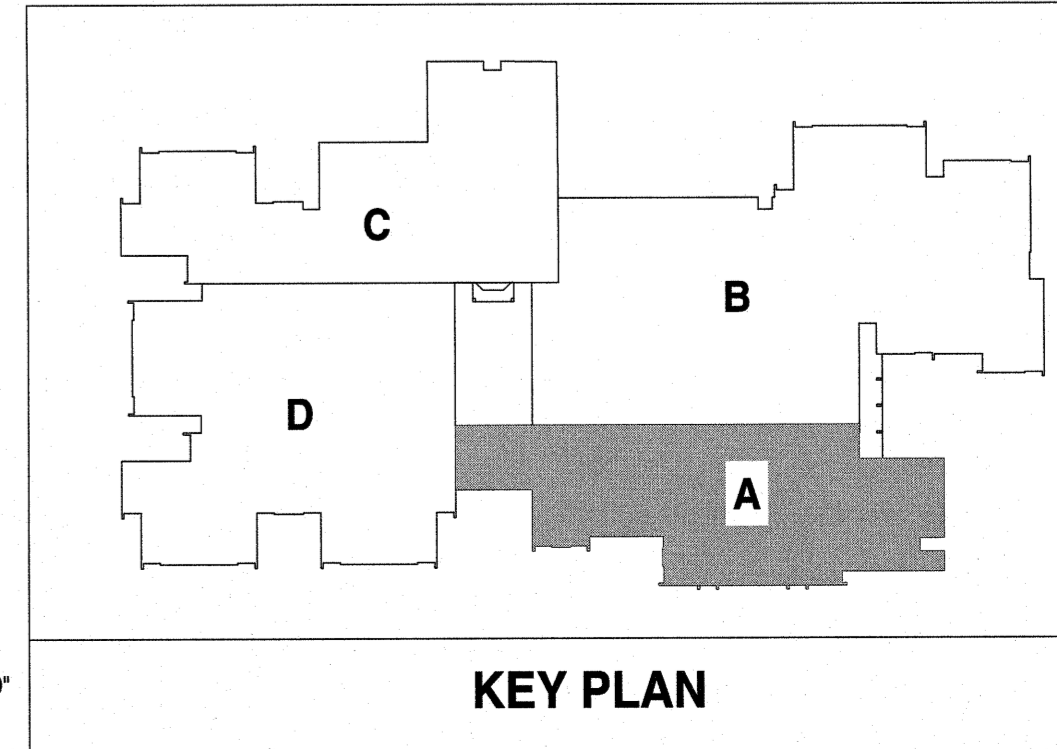


KEYED NOTES THIS SHEET ONLY

1	WALL/CEILING MOUNTED CAMERAS: CAMERA SHALL BE RE-INSTALLED IN ROOM PER LABEL ON CAMERA AND MOUNTED IN SAME LOCATION INSTALLED PRIOR TO DEMOLITION. RECONNECT TO EXISTING CABLE AND CONDUIT PROTECTED DURING DEMOLITION.
2	EXTERIOR CAMERAS: CONTRACTOR SHALL VERIFY CAMERA IS OPERATIONAL.

FIRE WALL LEGEND

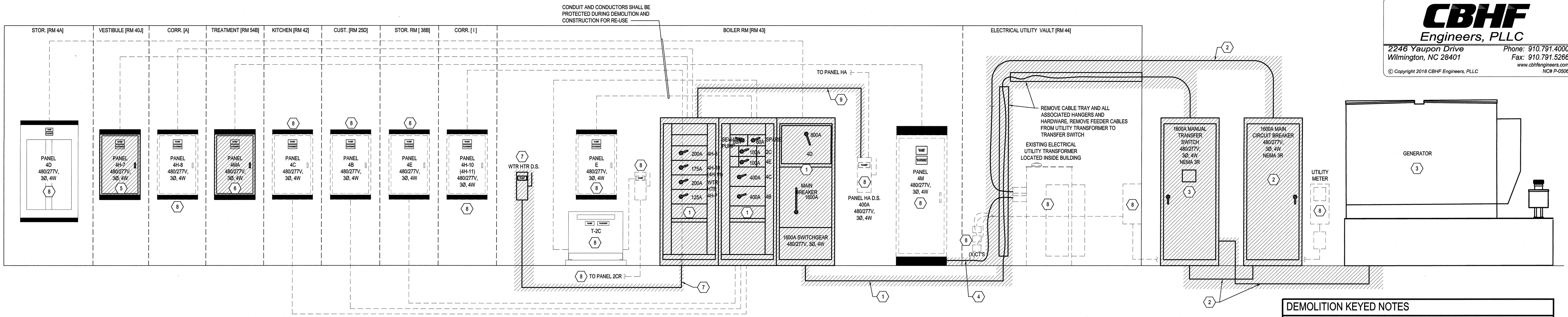
EXISTING 2-HOUR RATED WALL	---
2-HOUR RATED WALL	==



Renovations to:
M.C.S. Noble Middle School
6520 Market Street
Wilmington, North Carolina 28405

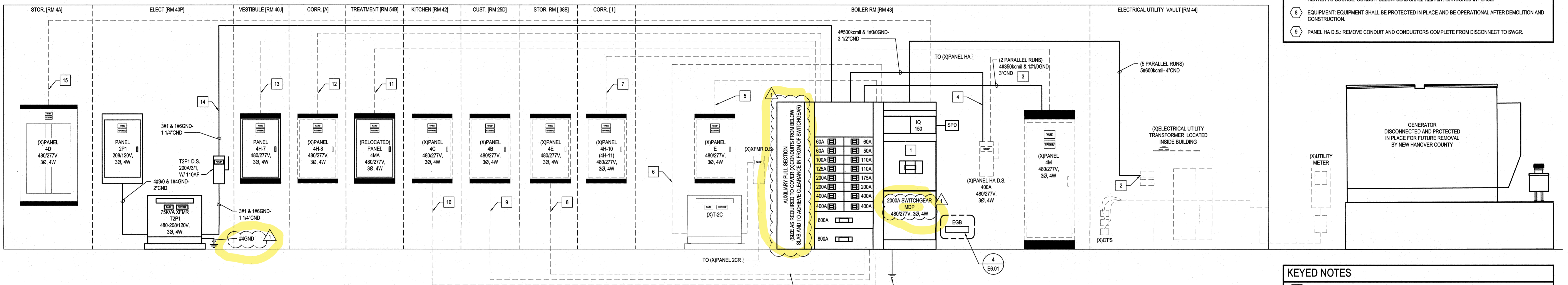
SYSTEMS FLOOR PLAN - AREA A

JOB NUMBER: 18005
DRAWN BY: GHG
CHECKED BY: WAC
DATE: 02-04-2019
REVISIONS: ADDENDUM #1: DEPARTMENT OF PUBLIC INSTRUCTION RESPONSE 2-18-2019



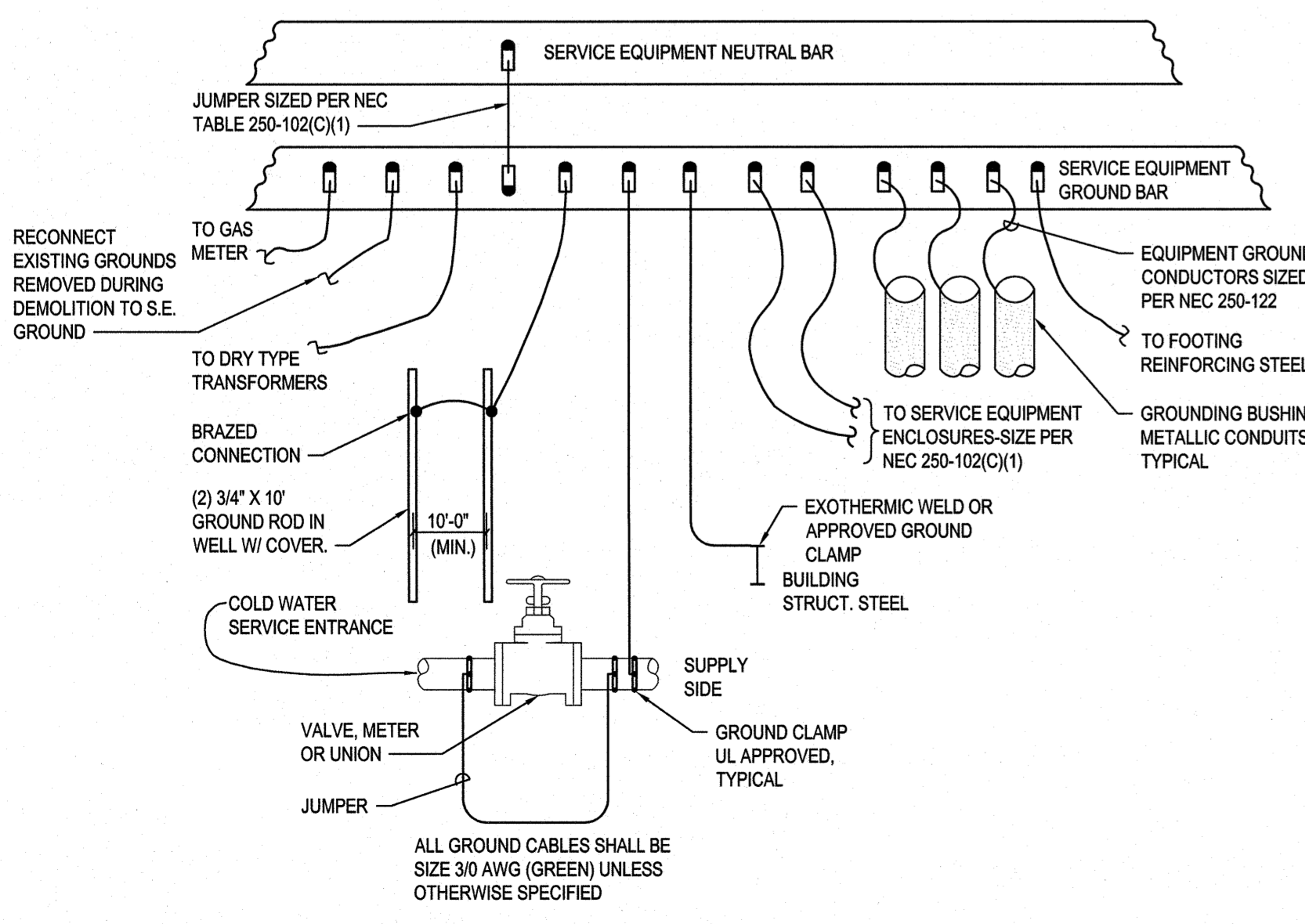
1 Riser Diagram - Demolition
E6.01 Not To Scale

- DEMOLITION KEYED NOTES**
- 1 MAIN SWGR: REMOVE MAIN SWGR. REMOVE CONDUIT AND CONDUCTORS FROM UTILITY. LABEL ALL BRANCH CIRCUITS PRIOR TO DISCONNECTION FROM MAIN SWGR AND PROTECT IN PLACE UNLESS LOAD IS SPECIFICALLY NOTED ON PLAN TO BE REMOVED. ELECTRICAL CONTRACTOR SHALL COORDINATE WITH OWNER THE REMOVAL OF BREAKERS PRIOR TO DEMOLITION. ELECTRICAL CONTRACTOR SHALL DELIVER BREAKERS TO OWNER SELECTED TO BE SALVAGED.
 - 2 MAIN CIRCUIT BREAKER: REMOVE CIRCUIT BREAKER, CONDUIT AND CONDUCTORS COMPLETE FROM UTILITY TO MANUAL TRANSFER SWITCH. CONCEALED UNDERGROUND CONDUIT SHALL REMAIN ABANDONED IN PLACE.
 - 3 GENERATOR AND MTS: GENERATOR AND MTS IS THE PROPERTY OF NEW HANOVER COUNTY. PROTECT GENERATOR IN PLACE. REMOVE MTS AND DELIVER TO NEW HANOVER COUNTY SCHOOLS FOR STORAGE. NEW HANOVER COUNTY SCHOOLS WILL DELIVER TO NEW HANOVER COUNTY AT A LATER DATE.
 - 4 PANELBOARD: REMOVE CONDUIT AND CONDUCTORS COMPLETE FROM UTILITY TO CIRCUIT BREAKER. CONDUIT AND CONDUCTORS FROM CIRCUIT BREAKER TO MAIN SWGR SHALL REMAIN PROTECTED IN PLACE.
 - 5 FLUSH PANELBOARD: REMOVE PANELBOARD. LABEL ALL BRANCH CIRCUITS PRIOR TO DISCONNECTION FROM PANEL AND PROTECT IN PLACE UNLESS LOAD IS SPECIFICALLY NOTED ON PLAN TO BE REMOVED. BRANCH CIRCUIT CONDUCTORS SHALL BE RECONNECTED TO NEW PANEL LOCATION.
 - 6 SURFACE PANELBOARD: REMOVE AND PROTECT PANEL FOR RELOCATION. LABEL ALL BRANCH CIRCUITS PRIOR TO DISCONNECTION FROM PANEL AND PROTECT IN PLACE UNLESS LOAD IS SPECIFICALLY NOTED ON PLAN TO BE REMOVED. PANELBOARD FEEDERS AND BRANCH CIRCUITS SHALL BE EXTENDED TO NEW PANEL LOCATION.
 - 7 WATER HEATER: REMOVE DISCONNECT. REMOVE CONDUIT AND CONDUCTORS COMPLETE FROM WATER HEATER TO SOURCE. CONDUIT BELOW SLAB SHALL REMAIN ABANDONED IN PLACE.
 - 8 EQUIPMENT: EQUIPMENT SHALL BE PROTECTED IN PLACE AND BE OPERATIONAL AFTER DEMOLITION AND CONSTRUCTION.
 - 9 PANEL HA D.S.: REMOVE CONDUIT AND CONDUCTORS COMPLETE FROM DISCONNECT TO SWGR.

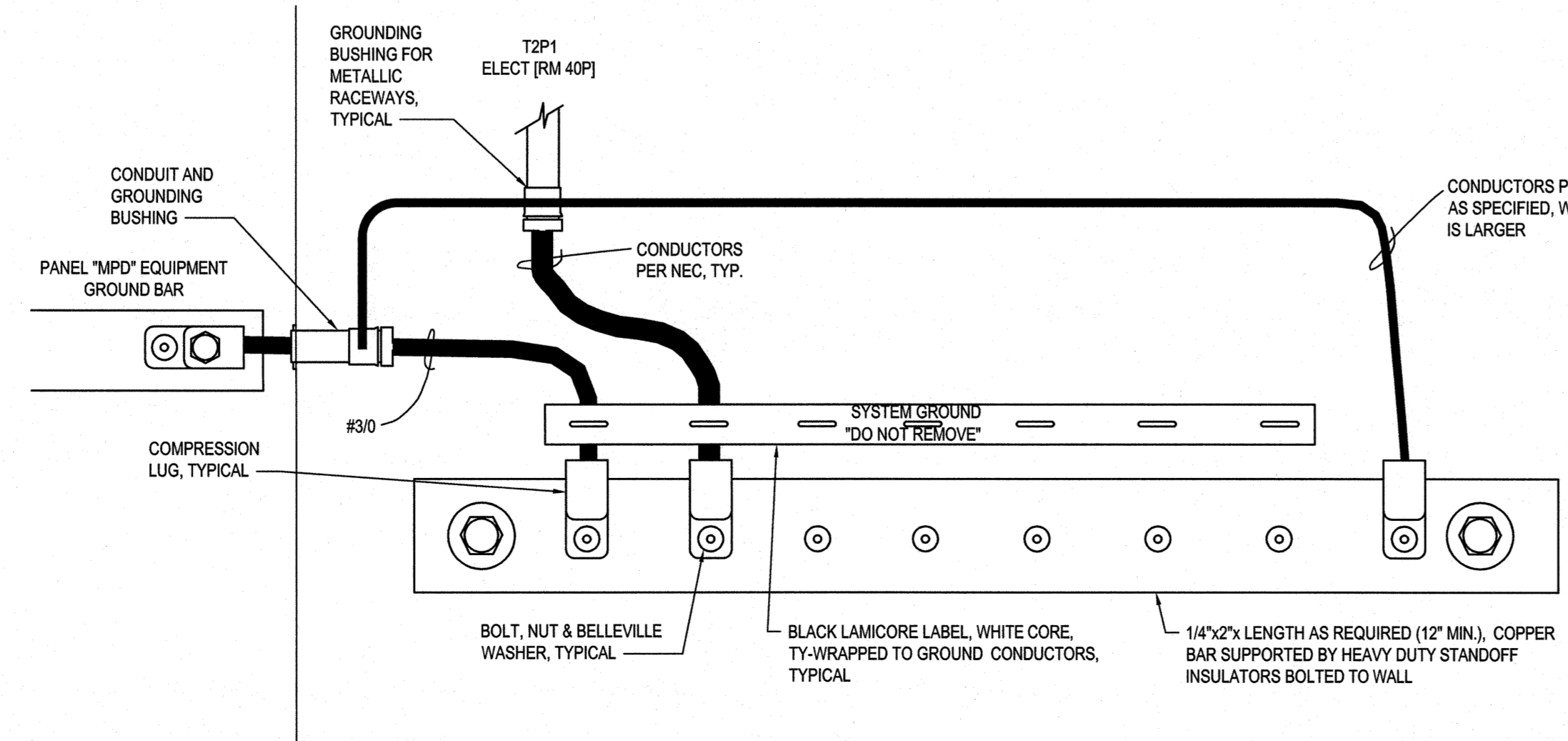


2 Riser Diagram
E6.01 Not To Scale

- KEYED NOTES**
- 1 MAIN SWGR: POSITION SWGR OVER EXISTING CONDUITS COMING UP THRU SLAB.
 - 2 PRIMARY FEEDER CONDUCTORS: PROVIDE AND INSTALL CONDUIT AND CONDUCTORS INDICATED, CONNECT TO EXISTING UTILITY TRANSFORMER AND TO MAIN SWGR. PER DUKE COORDINATION AND DIRECTION.
 - 3 (X)PANEL 4M: PROVIDE AND INSTALL CONDUIT AND CONDUCTORS INDICATED, CONNECT TO MAIN SWGR.
 - 4 (X)PANEL HA D.S.: PROVIDE AND INSTALL CONDUIT AND CONDUCTORS INDICATED.
 - 5 (X)PANEL E: RECONNECT #3 CONDUCTORS AND CONDUIT REMOVED AND PROTECTED DURING DEMOLITION. REWORK CONDUIT AS REQUIRED TO CONNECT TO SWGR.
 - 6 (X)PANEL 2C: RECONNECT #3 CONDUCTORS AND CONDUIT REMOVED AND PROTECTED DURING DEMOLITION. REWORK CONDUIT AS REQUIRED TO CONNECT TO SWGR.
 - 7 (X)PANEL 4H-10 (4H-11): RECONNECT #20 CONDUCTORS AND CONDUIT REMOVED AND PROTECTED DURING DEMOLITION. REWORK CONDUIT AS REQUIRED TO CONNECT TO SWGR.
 - 8 (X)PANEL E: RECONNECT #3 CONDUCTORS AND CONDUIT REMOVED AND PROTECTED DURING DEMOLITION. REWORK CONDUIT AS REQUIRED TO CONNECT TO SWGR.
 - 9 (X)PANEL 4B: RECONNECT (X)8500cmil CONDUCTORS AND CONDUIT REMOVED AND PROTECTED DURING DEMOLITION. REWORK CONDUIT AS REQUIRED TO CONNECT TO SWGR.
 - 10 (X)PANEL 4C: RECONNECT (X)8500cmil CONDUCTORS AND CONDUIT REMOVED AND PROTECTED DURING DEMOLITION. REWORK CONDUIT AS REQUIRED TO CONNECT TO SWGR.
 - 11 (X)PANEL 4MA: REWORK EXISTING CONDUIT AND CONDUCTORS TO ROUTE TO NEW LOCATION OF PANEL 4MA. SEE PLAN ON SHEET E1.01B.
 - 12 (X)PANEL 4H-8: RECONNECT (X)30 CONDUCTORS AND CONDUIT REMOVED AND PROTECTED DURING DEMOLITION. REWORK CONDUIT AS REQUIRED TO CONNECT TO SWGR.
 - 13 (X)PANEL 4H-7: RECONNECT (X)30 CONDUCTORS AND CONDUIT REMOVED AND PROTECTED DURING DEMOLITION. REWORK CONDUIT AS REQUIRED TO CONNECT TO SWGR.
 - 14 PANEL 2P1: PROVIDE AND INSTALL CONDUIT AND CONDUCTORS INDICATED, CONNECT TO MAIN SWGR.
 - 15 (X)PANEL 4D: RECONNECT (X)PARALLEL RUNS OF #500cmil CONDUCTORS AND CONDUIT REMOVED AND PROTECTED DURING DEMOLITION. REWORK CONDUIT AS REQUIRED TO CONNECT TO SWGR.



3 Service Grounding Detail
E6.01 Not To Scale

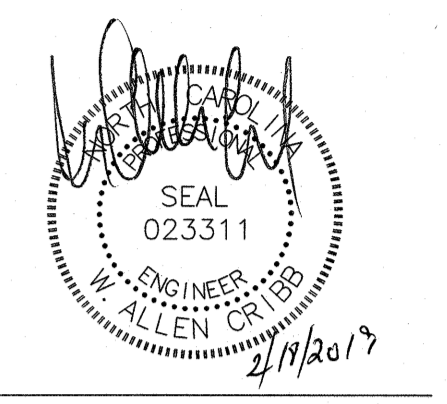


4 Ground Bar "EGB" Detail
E6.01 Not To Scale

CBHF
Engineers, PLLC
2246 Yaupon Drive
Wilmington, NC 28401
Phone: 910.791.4000
Fax: 910.791.5266
www.cbhfindesign.com
© Copyright 2018 CBHF Engineers, PLLC
NCB P-02059

bm
BOWMAN
MURRAY
HEMINGWAY
ARCHITECTS

514 Market Street
Wilmington, NC 28401
Tel - (910) 762-3521
Fax - (910) 762-8506

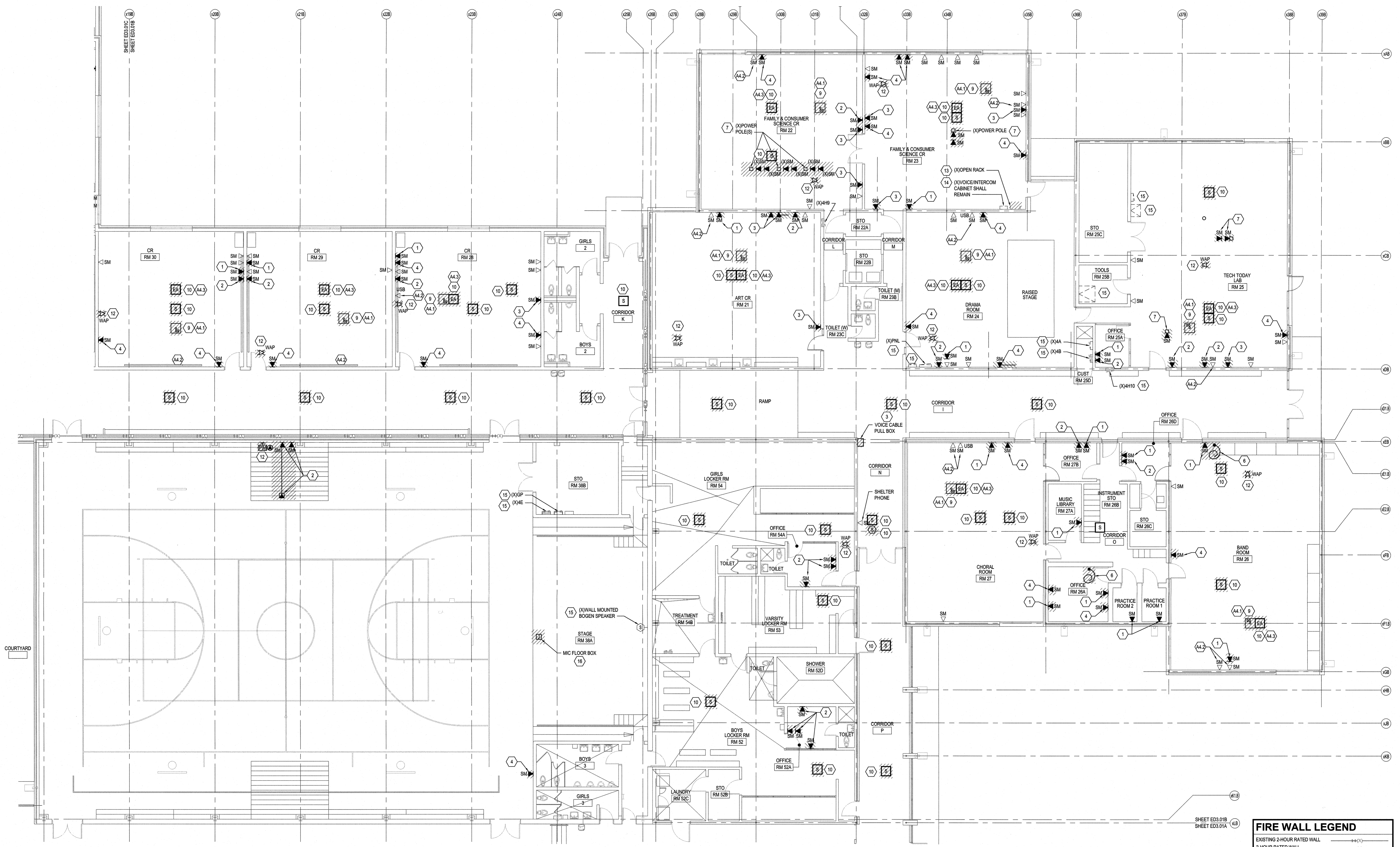
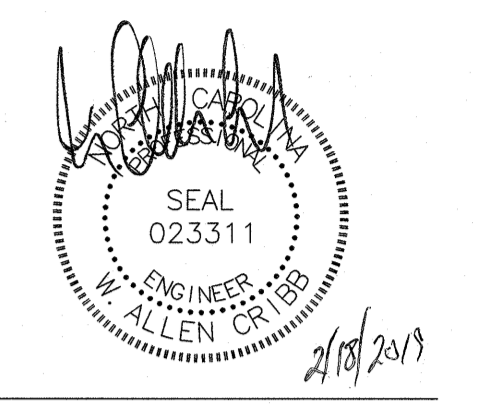


Renovations and Additions
M.C.S. Noble Middle School
6520 Market Street
Wilmington, North Carolina 28405

ELECTRICAL
DEMOLITION RISER
RISER DIAGRAM AND
DETAILS

JOB NUMBER
19005
DRAWN BY
HGH
CHECKED BY
MAC
DATE
12/21/2018
REVISIONS
ADDENDUM #1: DEPARTMENT
OF PUBLIC INSTRUCTION
RESPONSE 2-18-2019

SHEET NUMBER
E6.01

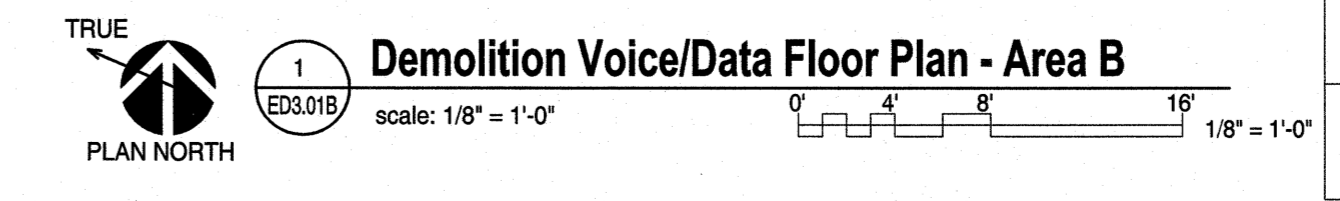
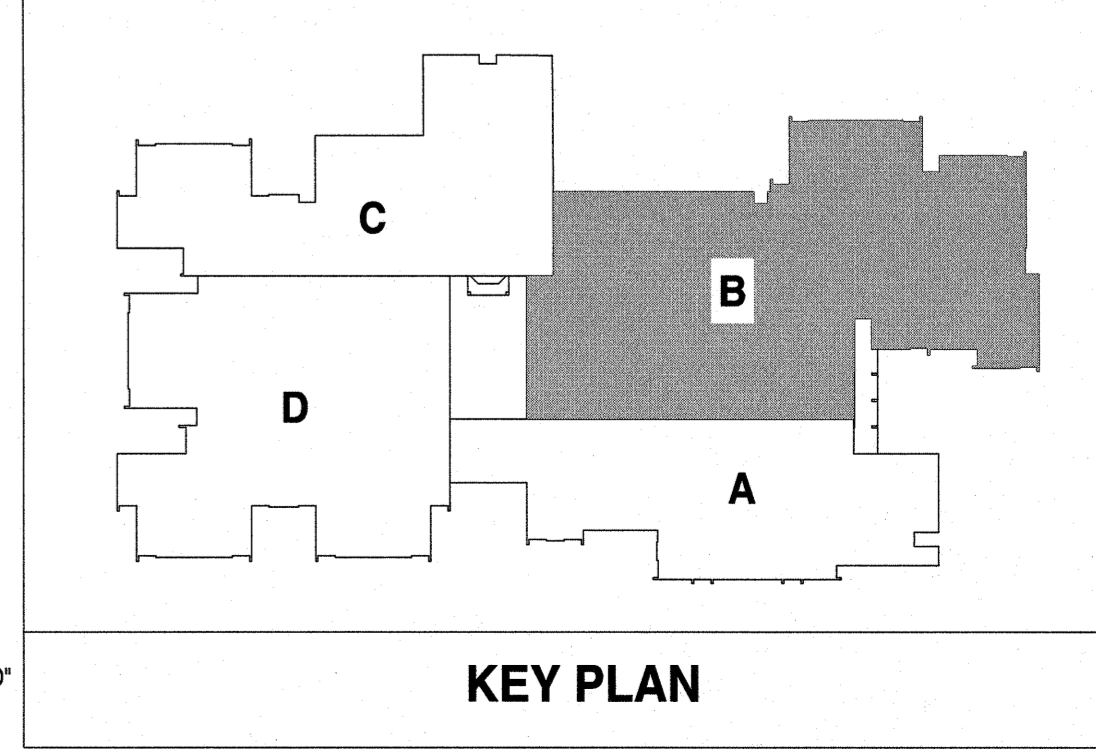
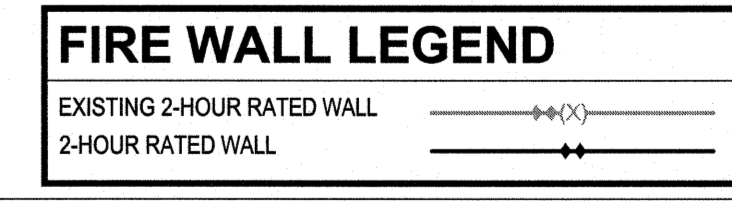


- DEMOLITION KEYED NOTES**
- REMOVE VOICE CABLE COMPLETE TO SOURCE. REMOVE RJ45 CONNECTOR AND PROVIDE BLANK IN OPEN RJ45 SPACE. CONTRACTOR SHALL VERIFY EXISTING REMAINING CAT6 DATA CABLES ARE OPERATIONAL AFTER DEMOLITION
 - REMOVE SURFACE RACEWAY AND BOX. REMOVE CABLE COMPLETE TO SOURCE.
 - REMOVE SURFACE RACEWAY.
 - REMOVE SURFACE RACEWAY AND BOX.
 - REMOVE SURFACE RACEWAY AND TOKEN RING CABLE.
 - REMOVE CABLE HANGING FROM CEILING COMPLETE TO SOURCE.
 - POWER POLE: REMOVE AND COIL DATA CABLES ABOVE CEILING AND PROTECT FOR RE-INSTALLATION. REMOVE POWER/DATA POLE.
 - REMOVE COVER AND PROVIDE BRUSHED STAINLESS BLANK COVER.
 - PROJECTOR: PROJECTOR SHALL BE REMOVED, STORED AND PROTECTED DURING DEMOLITION AND CONSTRUCTION BY A QUALIFIED VENDOR. PROJECTOR CEILING PAN SHALL BE STORED FOR INSTALLATION IN NEW CEILING GRID. PROTECT ALL CABLES FROM WALL BOX TO PROJECTOR CEILING PAN FOR RELOCATION.

- ALTERNATE KEYED NOTES**
- CEILING MOUNTED SPEAKERS: PRIOR TO DEMOLITION LABEL SPEAKER WITH CURRENT ROOM LOCATION. REMOVE SPEAKER AND PROTECT FOR RE-INSTALLATION. PROTECT CABLE AND CONDUIT IN PLACE FOR RECONNECTION
 - WALL MOUNTED PIM DEVICE: PRIOR TO DEMOLITION COORDINATE WITH NEW HANOVER COUNTY SCHOOLS SECURITY DEPT (JAMES DILLOW). NEW HANOVER COUNTY SCHOOLS SECURITY DEPT. SHALL REMOVE AND STORE PIM3 DEVICES AND EQUIPMENT DURING DEMOLITION AND CONSTRUCTION.
 - WAP: PRIOR TO DEMOLITION COORDINATE WITH NEW HANOVER COUNTY SCHOOLS IT DEPT (JAMES BLACKBURN). NEW HANOVER COUNTY SCHOOLS SECURITY DEPT. SHALL REMOVE AND STORE WAP DEVICES AND EQUIPMENT DURING DEMOLITION AND CONSTRUCTION.
 - REMOVE ABANDONED WALL CABINET.
 - REMOVE VOICE CABLE ONLY. INTERCOM CABLE AND WALL MOUNTED CABINET SHALL REMAIN OPERATIONAL.
 - EQUIPMENT: PROTECT IN PLACE. EQUIPMENT SHALL BE OPERATIONAL AFTER DEMOLITION AND CONSTRUCTION.
 - FLOOR MIC: REMOVE CONNECTOR AND CABLE COMPLETE TO SOURCE. PROVIDE BRASS BLANK COVER PLATE.

- ALTERNATE KEYED NOTES**
- PROJECTOR: PROJECTOR SHALL BE REMOVED BY A QUALIFIED VENDOR AND TURNED OVER TO OWNER. PROJECTOR CEILING PAN MOUNT SHALL BE STORED FOR INSTALLATION IN NEW CEILING GRID. REMOVE ALL AV CABLES FROM PROJECTOR CEILING PAN TO WALL MOUNTED AV BOXES. REMOVE PROJECTOR EXTENSION POLE AND PROVIDE BLANK COVER IN PROJECTOR CEILING PAN.
 - TEACHERS STATION: SMART BOARD SHALL BE REMOVED BY QUALIFIED VENDOR AND TURNED OVER TO OWNER. REMOVE ALL AV CABLING, AND CONNECTIONS IN EXISTING AV BOXES ASSOCIATED WITH TEACHERS STATION. PROVIDE BLANK FACEPLATE FOR REMAINING BOX. EXISTING DATA CABLES, DATA FACEPLATES AND RACEWAY SHALL REMAIN OPERATIONAL DURING DEMOLITION AND CONSTRUCTION. NOTE: NOT ALL CONDITIONS AT TEACHERS STATION ARE TYPICAL. PRIOR TO DEMOLITION CONTRACTOR SHALL VERIFY EACH TEACHERS STATION LOCATION WITH N. Co. IT DEPARTMENT.
 - EA SPEAKER: DISCONNECT AND REMOVE SPEAKER. REMOVE SPEAKER CABLE FROM SPEAKER TO SURFACE MOUNTED BOX AT TEACHERS STATION.

- DEMOLITION NOTES**
- FINISHES IN AREAS AROUND DEVICES SHALL BE REPAIRED/REPLACED TO MATCH EXISTING AREAS (EX. NEW CEILING TILE WHERE DEVICE AND BOX IS REMOVED, ETC.)
 - PROTECT ALL EXISTING DATA AND PUBLIC ADDRESS SYSTEMS AND MAINTAIN THEM IN OPERATION THROUGHOUT THE PROCESS OF THE WORK. NOTIFY THE OWNER AND ENGINEER IN WRITING IF SHUTDOWNS ARE REQUIRED PRIOR TO ANY OUTAGE OF SERVICE. WHERE THE DURATION OF A PROPOSED OUTAGE CANNOT BE TOLERATED BY THE OWNER, PROVIDE TEMPORARY CONNECTIONS AS REQUIRED TO MAINTAIN SERVICE.
 - ATTEMPT HAS BEEN MADE TO LOCATE AND SHOW ALL RECEPTACLE AND DATA DEVICES ON THESE PLANS AND ARE BELIEVED TO BE CORRECT. NOTWITHSTANDING, THE CONTRACTOR SHALL VERIFY ALL DEVICE LOCATIONS, CIRCUITS, AND WIRING ASSOCIATED WITH WORK FOR THIS PROJECT AND REPLACE ALL DEVICES EVEN IF NOT INDICATED ON PLANS.



Renovations to:
M.C.S. Noble Middle School
 6520 Market Street
 Wilmington, North Carolina 28405

DEMOLITION VOICE/DATA FLOOR PLAN - AREA B

JOB NUMBER: 18005
 DRAWN BY: HGH
 CHECKED BY: WAC
 DATE: 02-04-2019

REVISIONS:
 ADDENDUM #1: DEPARTMENT OF PUBLIC INSTRUCTION RESPONSE 2-18-2019

SHEET NUMBER: **ED3.01B**