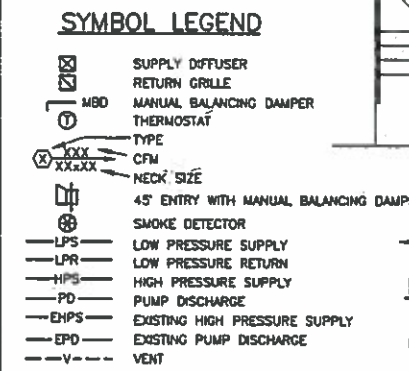
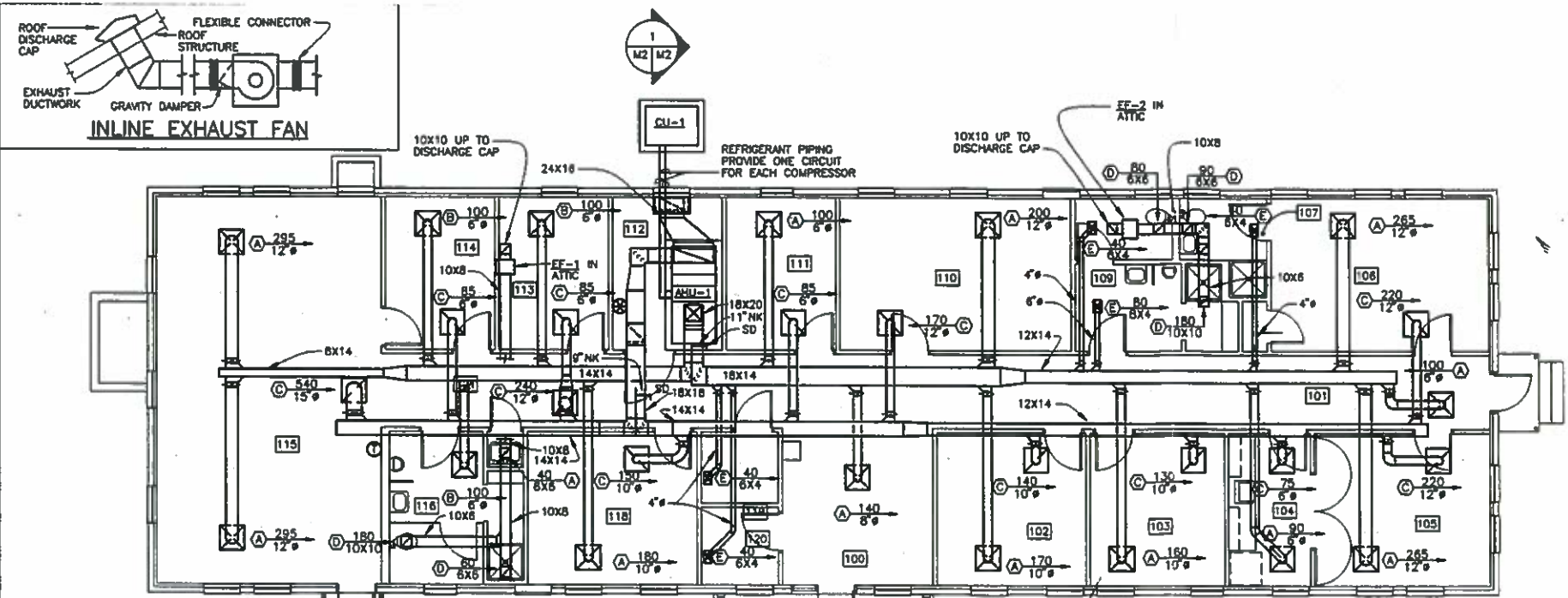
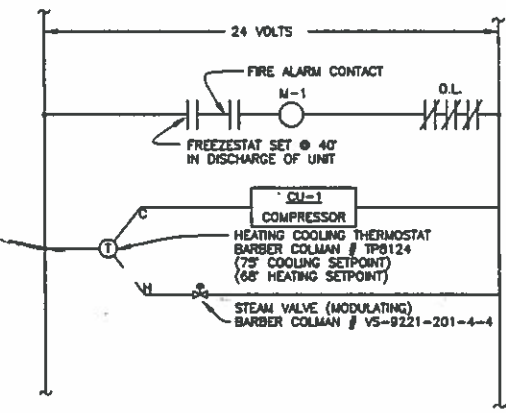


REVISIONS			
BY	DESCRIPTION	DATE	APPROVED



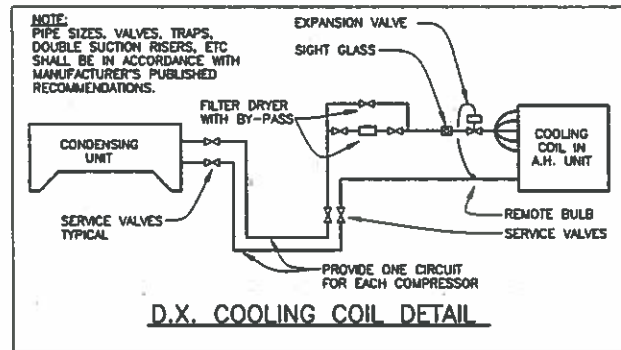
**RENOVATED FLOOR PLAN - HVAC**  
SCALE: 3/16" = 1'-0"

NOTE: ROUNOUT FOR DIFFUSERS AND RETURNS SHALL BE SAME SIZE AS NECK SIZE.



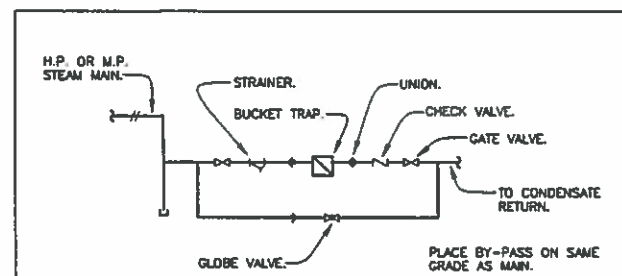
**ELECTRIC CONTROLS**

NOTE: BARBER COLMAN NUMBERS ARE UTILIZED TO ESTABLISH A COMPARISON FOR TYPE, QUALITY AND FUNCTION ONLY. CONTROL DEVICES BY OTHER MANUFACTURERS ARE ACCEPTABLE PROVIDED THEY PERFORM THE SAME FUNCTION AS THOSE INDICATED AND ARE OF EQUAL QUALITY.



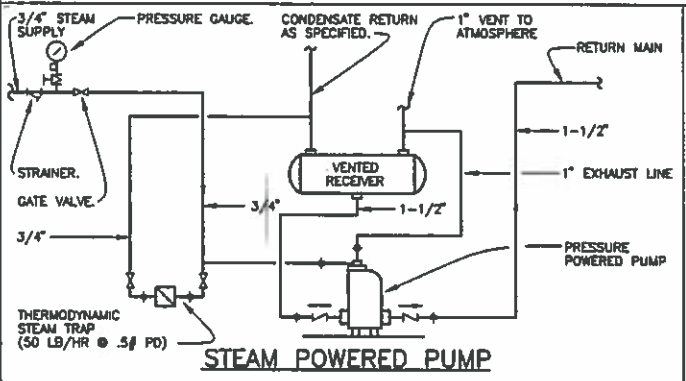
**D.X. COOLING COIL DETAIL**

AIR HANDLING UNITS	
A.H. UNIT NO.	AHU-1
SYSTEM TYPE	HORIZONTAL
<b>SUPPLY FAN</b>	
TOTAL CFM	2800
O.A. CFM (MIN)	860
TOTAL S.P./EXT. S.P.	1.48 / 0.5
FAN RPM / BHP	1026 / 1.0
HP, VOLTS, #	1, 208, 3
STARTER	MAG
FAN TYPE	12 FC
<b>COOLING COILS</b>	
TOTAL LOAD (MBH)	112.3
AIR OVER COIL (CFM)	2800
EAT (DB / WB)	82.5 / 68.2
LAT (DB / WB)	55.0 / 53.6
SST	38.0
MAX AIR PD	0.37
MAX FACE VEL.(FT/MIN)	500
<b>HEATING COILS</b>	
TOTAL LOAD (MBH)	92.5
AIR OVER COIL (CFM)	2800
EAT / LAT	90.0 / 57.0
EWT / LWT	AHU-1
LB/HR	92.8
STEAM PSI	2.0
MAX AIR PD	0.13
MAX FACE VEL.(FT/MIN)	500
<b>FILTERS</b>	
TYPE	Z' THROWAWAY
MIN EFF (HBS)	30
MAX PD (INITIAL)	0.18
MAX PD (FINAL)	0.51
MAX FACE VEL.(FT/MIN)	350
REMARKS	

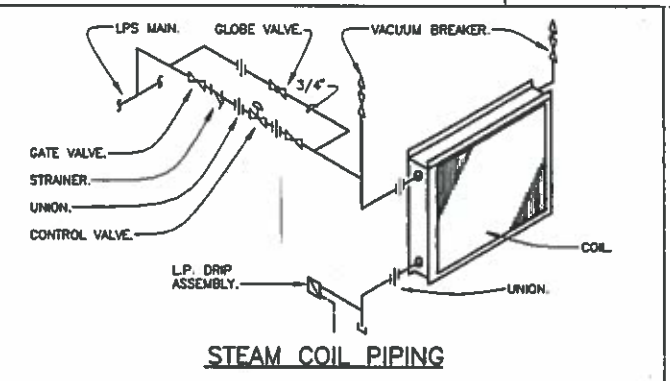


**MEDIUM & HIGH PRESSURE DRIP ASSEMBLY**  
SIZE DIRT LEG IN ACCORDANCE WITH TRAP MANUFACTURER RECOMMENDATIONS.

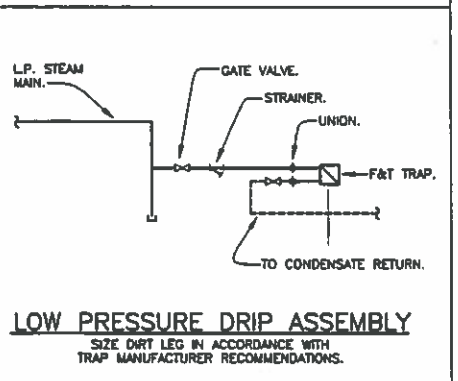
NO.	CAPACITY	SST	AMBIENT	EER	ELECTRICAL DATA				REMARKS	
					VOLTS	PHASE	COMPRESSORS	FANS		
CU-1	112.3	38.0	95°F	8.9	208	3	2 @ 18.7 RLA & 118.0 LRA	1 @ 6.0FLA	28.3	35



**STEAM POWERED PUMP**



**STEAM COIL PIPING**



**LOW PRESSURE DRIP ASSEMBLY**  
SIZE DIRT LEG IN ACCORDANCE WITH TRAP MANUFACTURER RECOMMENDATIONS.

SYMBOL	TYPE	FINISH	DAMPER	THROW	REMARKS
B	LAY-IN SQUARE LOUVER FACE SUPPLY	BOW*	YES	2-WAY	
C	LAY-IN EGG CRATE RETURN	BOW*	YES	-	
D	EGG CRATE	BOW*	YES	-	
E	CURVED BLADE	BOW*	YES	1-WAY	

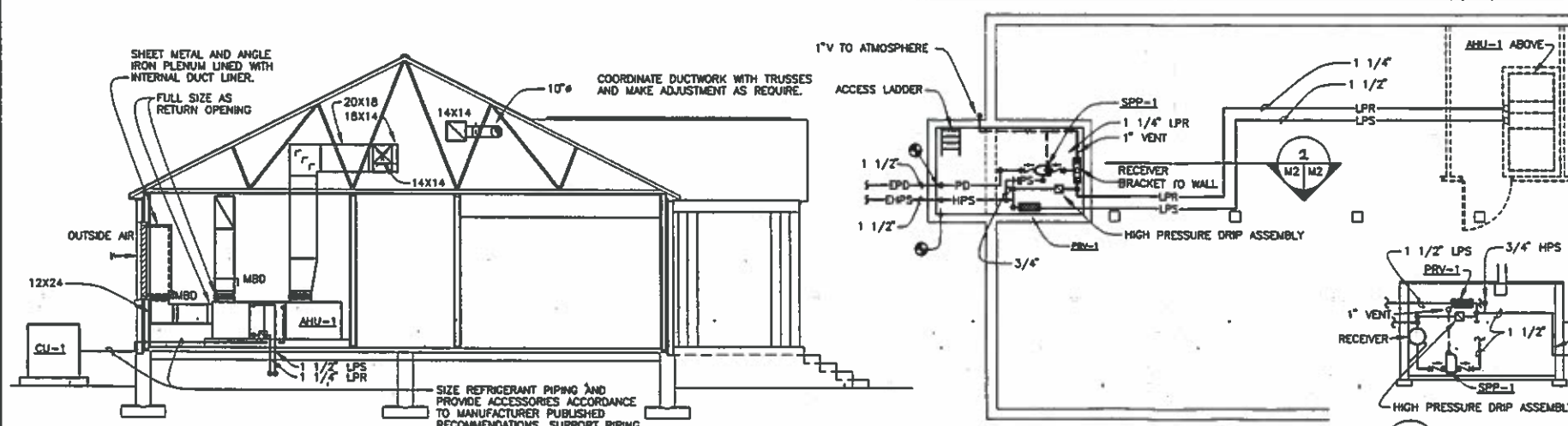
\* BAKED-ON WHITE

NO.	TYPE	DRIVE	CFM	SP	RPM	ELECTRICAL DATA			REMARKS	
						VOLTS	PHASE	WATTS		
EF-1	CENTRIFUGAL ROOF INLINE	BELT	280	3/8	1140	120	1	190	MAN	**
EF-2	CENTRIFUGAL ROOF INLINE	BELT	350	3/8	1140	120	1	190	MAN	

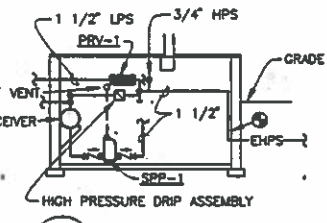
\*\*PROVIDE PITCHED ROOF DISCHARGE CAP AND SOLID STATE SPEED CONTROL.

NO.	SERVICE	LOCATION	PRESSURE (PSIG)		CAPACITY (LBS/HR)	REMARKS
			INLET	OUTLET		
PRV-1	HEATING	MECH ROOM	100	15	92.3	

NO.	GPM	INPUT	LIFT	RECEIVER SIZE	REMARKS

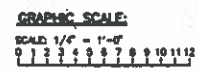


**UNDERFLOOR PLAN - HVAC**  
SCALE: 3/16" = 1'-0"



**SECTION 2**  
SCALE: 3/16" = 1'-0"

**SECTION 1**  
SCALE: 1/4" = 1'-0"



SCALE: 3/16" = 1'-0"  
0 1 2 3 4 5 6 7 8 9 10 11 12

CROCKFORD AND ASSOCIATES, INC. CONSULTING ENGINEERS P.O. BOX 34781 CHARLOTTE, NC 28234

STOCHER & KANDY, PA 615 EAST BROAD STREET ROCKINGHAM, NORTH CAROLINA

**MARINE CORPS BASE**  
CAMP LEJEUNE, NORTH CAROLINA

DES. MSW  
DR. MSW  
CHL. MSW

SUBMITTED BY: [Signature]  
DESIGN DR.

APPROVED: PWD OR OICC DATE: 7/12/99  
SATISFACTORY TO: [Signature]

**MAJOR INTERIOR/EXTERIOR REPAIRS TO BLDG RR-12**

**RENOVATED FLOOR PLANS**

NAVYAC DRAWING NO. 4326845  
CONSTR. CONTR. NO. 18R10-83-B-533

SCALE: NOTED | SPEC. 05-85-533 | SHEET 13 OF 17