

11/19/2020 2:45:50 PM

SCOPE GUIDANCE AND GENERAL NOTES

- THE WORK DESCRIBED IN THESE T-SERIES DRAWINGS APPLY TO SPECIFICATION SECTIONS 27 00 10, 27 00 50, 27 00 90, 27 10 00, 27 11 00.
- ELECTRICAL SCOPE:**
THE INFRASTRUCTURE PORTION OF THESE DOCUMENTS SHALL BE PROVIDED AND INSTALLED BY THE ELECTRICAL CONTRACTOR AND SHALL INCLUDE, BUT NOT BE LIMITED TO, THE FOLLOWING:
3.1 TELECOM SPACES
3.1.1 TELECOM RELAY RACKS AND EQUIPMENT CABINETS
3.1.2 CABLE RUNWAY AND TRAY IN TELECOM ROOMS
3.1.3 PATCH PANELS
3.1.4 TERMINATION BLOCKS
3.1.5 VERTICAL AND HORIZONTAL CABLING MANAGEMENT
3.1.6 BONDING AND GROUNDING OF EQUIPMENT TO GROUND BUS (AS PROVIDED BY ELECTRICAL PORTION)
- CABLING AND CONNECTIVITY**
3.2.1 ALL COPPER AND FIBER CABLING PATCH CORDS
3.2.2 ALL COPPER AND FIBER CONNECTORS AND JACKS
3.2.3 ALL COPPER AND FIBER TERMINATIONS
3.2.4 ALL DATA CABLING REQUIRED TO SUPPORT SECURITY AND ACCESS CONTROL INFRASTRUCTURE. (CAMERAS, CARD READERS, MEDIA CONVERTERS, ETC.)
3.2.5 WORKSTATION FACEPLATES
3.2.6 CONSOLIDATION POINTS
3.2.7 EXTERIOR/OUTSIDE PLANT CABLING, INCLUDING TERMINATIONS AND TESTING.
- INTERIOR & EXTERIOR PATHWAYS**
3.3.1 SEALING OF TELECOM CONDUITS AND SLEEVES
- WIRELESS ACCESS POINTS**
3.4.1 WIRELESS ACCESS POINTS SHALL BE OWNER FURNISHED, CONTRACTOR INSTALLED
3.4.2 ASSUME THAT WIRELESS ACCESS POINTS WILL BE PROVIDED WITH STANDARD MOUNTING ACCESSORIES ONLY. ANY SPECIAL MOUNTING EQUIPMENT, FITTINGS OR ACCESSORIES SHALL BE PROVIDED BY THE CONTRACTOR.
3.4.3 CONTRACTOR TO PROVIDE MOCK-UP INSTALLATION PRIOR TO ROUGH-IN OF UNITS TO BE INSTALLED IN EACH CEILING INSTALLATION TYPE.
3.4.4 CONTRACTOR SHALL REVIEW INSTALLATION ON ALL CEILING TYPES WITH OWNER PRIOR TO ROUGH-IN
3.4.5 CONTRACTOR TO PROVIDE ALL PATCH CORDS, LABELING, AND AS-BUILT DOCUMENTATION
3.4.6 CONTRACTOR TO SUBMIT FOR APPROVAL ANY DIVIATIONS FROM THE DETAILS INCLUDED IN THESE DESIGN DOCUMENTS.
- THE CONTRACTOR RESPONSIBLE FOR THE ELECTRICAL PORTION SHALL PROVIDE AND INSTALL ALL INCIDENTAL EQUIPMENT AND MATERIALS RELATED TO THEIR WORK AND REQUIRED BY THE COMMUNICATIONS CABLING DOCUMENTS. FOR EXAMPLE, INSULATING BUSHINGS FOR CONDUIT ENDS SHALL BE PROVIDED BY THE ELECTRICAL CONTRACTOR.
- THE CONTRACTOR RESPONSIBLE FOR THE CABLING PORTION SHALL PROVIDE AND INSTALL ALL INCIDENTAL EQUIPMENT AND MATERIALS RELATED TO THEIR WORK AND REQUIRED BY THE COMMUNICATION CABLING DOCUMENTS. FOR EXAMPLE, CABLE TIES NECESSARY FOR CABLE MANAGEMENT SHALL BE PROVIDED BY THE CABLING CONTRACTOR.
- FOR THE INFRASTRUCTURE PORTION, ANY AND ALL DEVIATIONS FROM THE CONTRACT DOCUMENTS REQUIRED BY FIELD CONDITIONS SHALL BE RESOLVED THROUGH THE RFI (REQUEST FOR INFORMATION) PROCESS TO AVOID INADEQUATE OR INCORRECT INFRASTRUCTURE FOR USE BY THE CABLING CONTRACTOR.
- THE CABLING CONTRACTOR SHALL NOTE THAT SECURITY DRAWINGS REQUIRE CABLING TO BE RUN BY THE STRUCTURED CABLING CONTRACTOR.
- CONDUITS AND OTHER RACEWAYS USED FOR ANY PURPOSE, INCLUDING WIRING AND CABLING FOR BUILDING WITHIN ARCHITECTURAL SHAFTS AND ENCLOSURES INDICATED ON THE DRAWING OR CONCEALED WITHIN THE CONCRETE STRUCTURE, EXCEPT WHERE ROUTING IS SPECIFICALLY SHOWN OR DETAILED TO BE EXPOSED ON THE DRAWINGS, THE CONTRACTOR SHALL COORDINATE ROUTING OF RACEWAY WITHIN CONCRETE SLABS, BEAMS, AND COLUMNS WITH THE SUBCONTRACTORS. RACEWAY CONCEALED IN STRUCTURE SHALL NOT EXCEED 1" DIAMETER AND ROUTING OF SUCH RACEWAY SHALL BE MODIFIED TO COMPLY WITH THE CONCEALMENT AND SPACING REQUIREMENTS INDICATED ON THE STRUCTURAL DRAWINGS. RACEWAY SHALL NOT BE VISIBLE FROM THE FINISHED SPACE.
- PROVIDE A PROPERLY SIZED PULLBOX IN CONDUIT PATHWAYS WHERE CONDUIT WOULD EXCEED 100' OF CONTINUOUS PATHWAY OR 180 DEGREES OF BEND BETWEEN PULLBOXES OR THE ENDS OF THE CONDUIT PATHWAY.

INFORMACAST SPEAKER NOTES

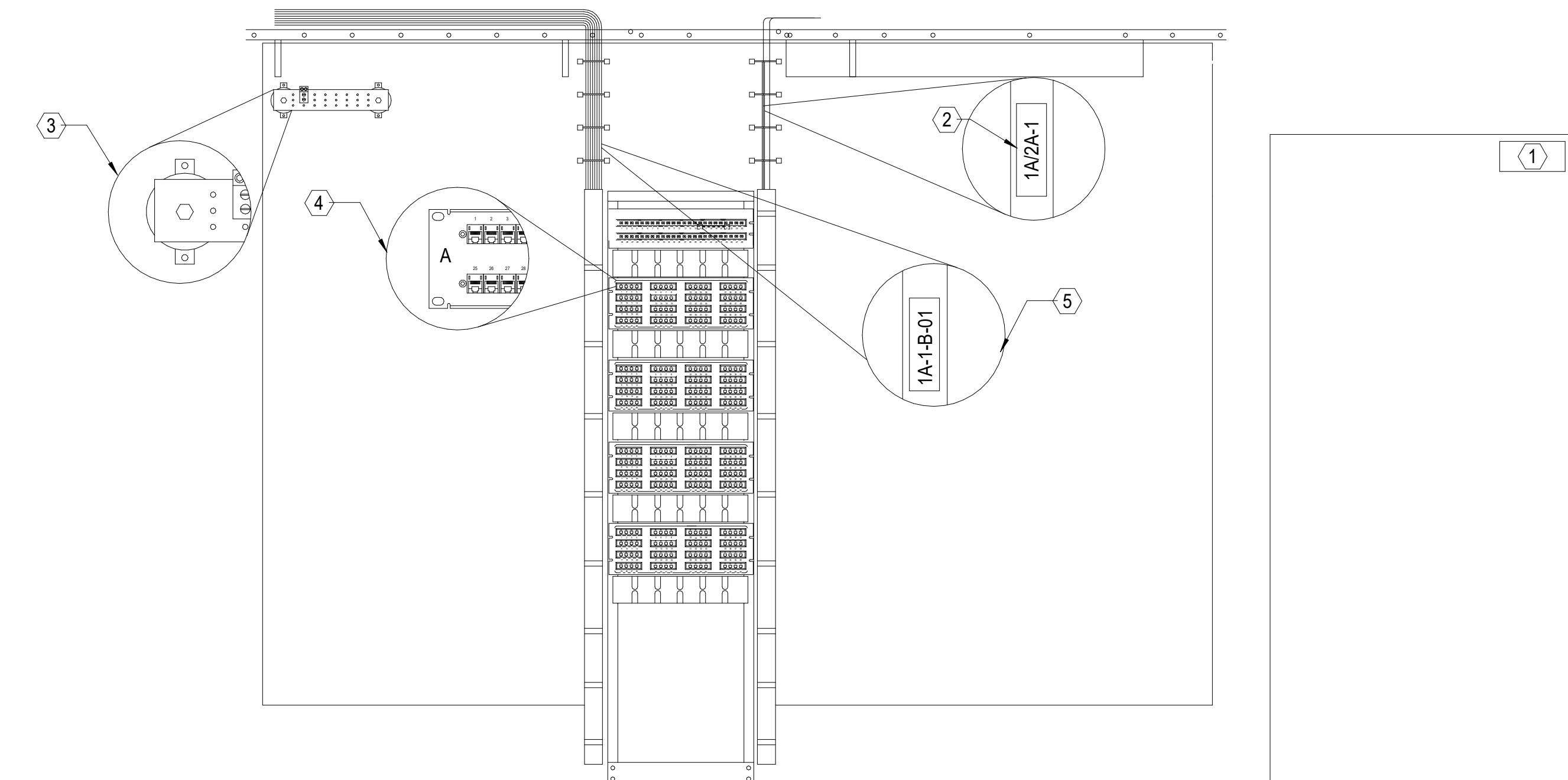
- THE INFORMACAST FUSION SYSTEM IS CURRENTLY IN USE THROUGHOUT NEW HANOVER COUNTY. ALL SPEAKERS INDICATED ON THESE DRAWINGS ARE ADDITIONAL END DEVICES THAT WILL BE INTEGRATED INTO THE EXISTING INFORMACAST FUSION SYSTEM.
- AT ALL SPEAKER LOCATIONS AS INDICATED ON THE FLOOR PLANS, CONTRACTOR SHALL FURNISH AND INSTALL AN 8" ROUND INFORMACAST-COMPLIANT CEILING SPEAKER (VALCOM #VIP-120A-IC) WITH TILE BRIDGE (VALCOM #V-9916M).
- CONTRACTOR SHALL FURNISH AND INSTALL A CATEGORY-6 PATCH CORD, AND CONNECT THE PATCH CORD BETWEEN THE INFORMACAST SPEAKER TO THE BISCUIT JACK IN THE CEILING. PATCHES IN THE TELECOMMUNICATIONS ROOMS TO THE POE-ENABLED NETWORK SWITCH WILL BE PERFORMED BY THE OWNER.
- ADDITIONAL LICENSES FOR EACH END DEVICE (INFORMACAST SPEAKERS) SHALL BE PROVIDED BY THE CONTRACTOR. CONTACT BRAD JUNGEMANN AT SINGLEWIRE SOFTWARE AT 608-441-1286 OR BRAD.JUNGEMANN@SINGLEWIRE.COM FOR PRICING INFORMATION.

SERVER ROOM EQUIPMENT

SERVER ROOM EQUIPMENT PROVIDED AS PART OF CUSTOMIZED SOLUTION THAT INCLUDES CABINETS, TERMINATION ACCESSORIES, CABLE MANAGEMENT, HOT AISLE CONTAINMENT, UPS AND BATTERY CABINET AS WELL AS OTHER HARDWARE AND ACCESSORIES. APC QUOTE/PART NUMBER ISX0001852536-0005

SOLUTION NUMBER : ISX0001852536-0005
DESIGN NAME : ISXD DESIGN 1
DESIGN NOTES FOR ISXD DESIGN 1

FOR MORE INFORMATION SEE BOM MATERIALS FILE INCLUDED WITH THE TELECOM DRAWINGS OR/AND CONTACT APC REPRESENTATIVE :
JIMMY JACK - TEL. 803 833 3046
JJACK@CRITICALCOMPONENTS.NET



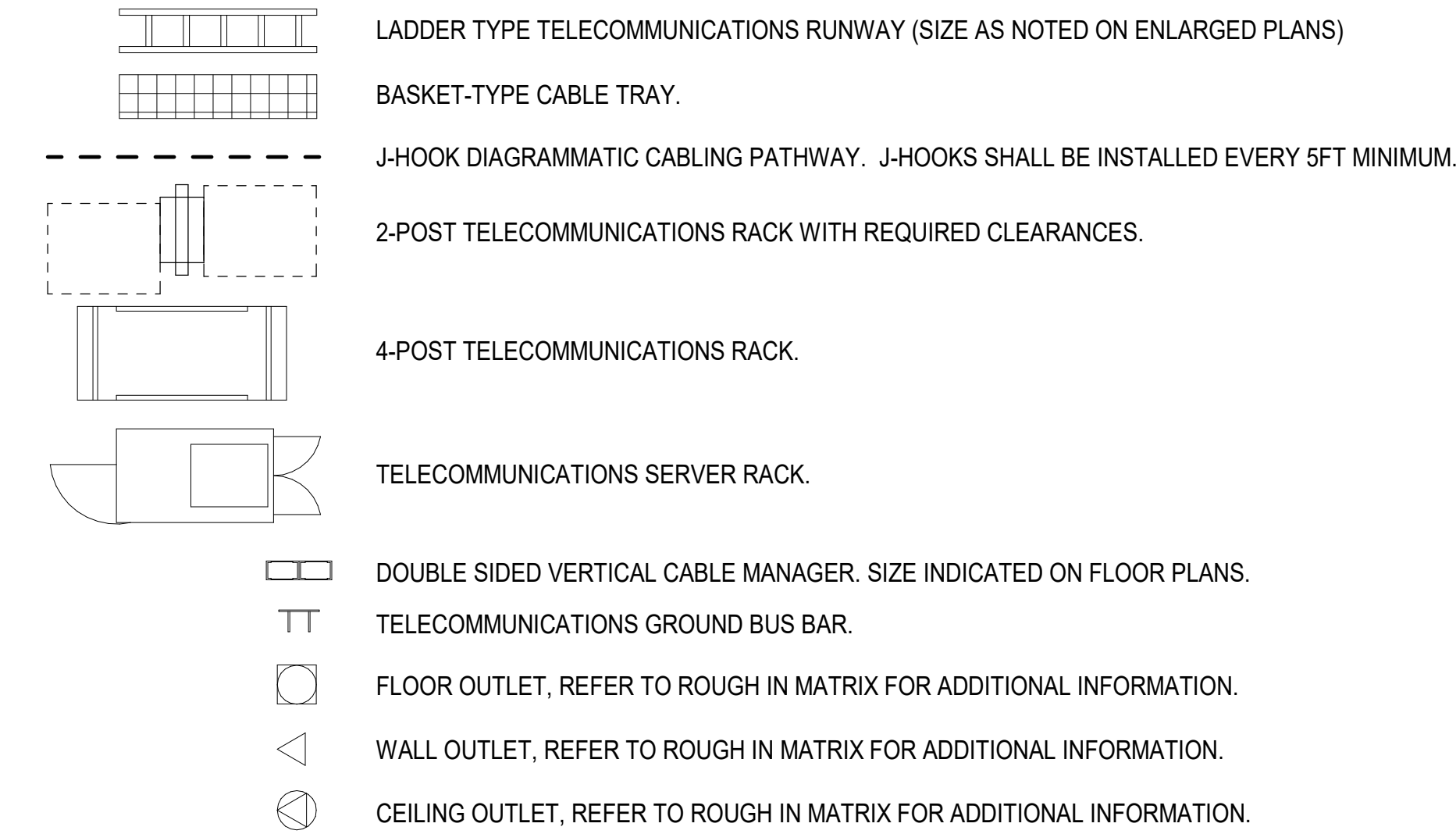
OUTLET ROUGH-IN AND CABLING REQUIREMENT MATRIX

DRAWING SYMBOL	NAME	BACKBOX SIZE	MOUNTING HEIGHT AFF	CONDUIT SIZE	FACEPLATE TYPE	TERMINATION	PORT TYPE QUANTITIES			CABLING TYPE	CABLING COLOR	JACK COLOR	NOTES	GENERAL NOTES
							VOICE	DATA	COAX					
#D	UNIVERSAL DATA OUTLET	2G	18"	1"	SINGLE GANG 2-PORT	RJ-45	#			CAT 6	BLUE	BLUE	# INDICATED ON FLOOR PLANS REPRESENTS QUANTITY OF DATA CABLE DROPS REQUIRED	1. ALL INFORMATION IS TYPICAL AS INDICATED IN THIS MATRIX UNLESS OTHERWISE NOTED ELSEWHERE. 2. ALL OUTLETS SHALL BE LOCATED ADJACENT TO POWER RECEPTACLES WHERE APPLICABLE. 3. FINAL HEIGHT AND MOUNTING LOCATIONS SHALL BE COORDINATED WITH THE ARCHITECTURAL ELEVATIONS. 4. ALL OUTLET CONDUITS SHALL BE ROUTED TO THE NEAREST ACCESSIBLE CEILING SPACE IN THE CORRIDOR, UON. 5. PROVIDE BLANK MODULES FOR ALL UNUSED PORTS. 6. REAM AND BUSH ALL CONDUIT ENDS. 7. PROVIDE SINGLE GANG PLASTER RING FOR DOUBLE GANG BOXES WITH SINGLE GANG FACEPLATES. 8. PROVIDE DOUBLE GANG PLASTER RING FOR DOUBLE GANG BOXES WITH DOUBLE GANG FACEPLATES. 9. REFER TO FACEPLATE DETAILS FOR OUTLET PORT CONFIGURATION
#D	UNIVERSAL DATA OUTLET - ABOVE COUNTER	2G	SEE NOTE	1"	SINGLE GANG 2-PORT	RJ-45	#			CAT 6	BLUE	BLUE	MOUNT AT 8'-12" ABOVE COUNTER TOP COORDINATE WITH ELECTRICAL # INDICATED ON FLOOR PLANS REPRESENTS QUANTITY OF DATA CABLE DROPS REQUIRED.	
W	STANDARD WALL PHONE OUTLET	1G	48"	1"	WALL PHONE FACEPLATE	RJ-45	1			CAT 6	BLUE	BLUE		
DP	AV DISPLAY OUTLET	SEE NOTE	PER ARCH. ELEVATIONS	1"	SINGLE GANG 4-PORT	RJ-45/F-TYPE	2	1		CAT 6	BLUE	BLUE	FURNISH AND INSTALL RECESSED BACKBOX PER DETAIL 1/T-501.	
B/A	POKE THRU - MODULAR FURNITURE INFEEED	NA	FLOOR	1.5"	SEE DETAIL	RJ-45	2 PER SEAT			CAT 6	BLUE	BLUE	SEE DETAIL 2 ON SHEET T-501 FOR MORE INFORMATION.	
P/B	POKE THRU - SHARED DATA / ELECTRICAL	NA	FLOOR	1.25"	DATA ADAPTER PLATE	RJ-45	2			CAT 6	BLUE	BLUE	TERMINATE DATA CABLES IN POKE-THRU. COORDINATE WITH ELECTRICAL.	
P	FLOOR BOX WITH UNIVERSAL DATA OUTLET	NA	FLOOR	1.25"	4-PORT INSERT	RJ-45	2			CAT 6	BLUE	BLUE	REFER TO ELECTRICAL DETAIL SHEET. ROUTE DATA CABLES TO DESK AS INDICATED.	
C/FB	POKE THRU - SHARED AV DATA / ELECTRICAL	NA	FLOOR	1.25"	DATA ADAPTER PLATE	RJ-45	2			CAT 6	BLUE	BLUE	TERMINATE DATA CABLES IN POKE-THRU. COORDINATE WITH ELECTRICAL.	
AP	UNIVERSAL DATA OUTLET FOR WIRELESS ACCESS POINT	NA	CEILING	1"	2-PORT BISCUIT BOX	RJ-45	2			CAT 6A	BLUE	BLUE	SEE DETAIL X ON SHEET T-501 FOR MORE INFORMATION. ACCESS POINT TO BE PROVIDED BY OWNER. COORDINATE EXACT LOCATION WITH VENDOR/OWNER PRIOR TO INSTALLATION.	
S	UNIVERSAL DATA OUTLET FOR INFORMACAST SPEAKER	NA	CEILING	1"	2-PORT BISCUIT BOX	RJ-45	1			CAT 6	BLUE	BLUE	CONTRACTOR TO FURNISH AND INSTALL ALL INFORMACAST SPEAKERS AND ASSOCIATED HARDWARE. SEE INFORMACAST SPEAKER NOTES.	
PRJ	PROJECTOR OUTLET	NA	CEILING	1"	2-PORT BISCUIT BOX	RJ-45	1			CAT 6	BLUE	BLUE	COORDINATE WITH FURNITURE MANUFACTURER PRIOR TO INSTALLATION. PROVIDE A 1.5" FLEX CONDUIT BETWEEN FURNITURE AND WALL. SEE DETAIL X ON SHEET T-501.	
J	MODULAR FURNITURE OUTLET(S)	NA	SEE NOTE	NA	2-PORT INSERT	RJ-45	2			CAT 6	BLUE	BLUE	COORDINATE WITH FURNITURE MANUFACTURER PRIOR TO INSTALLATION. PROVIDE A 1.25" FLEX CONDUIT BETWEEN FURNITURE AND WALL.	
J	WALL FED MODULAR FURNITURE OUTLET(S)	NA	SEE NOTE	1.25"	2-PORT INSERT	RJ-45	1			CAT 6	BLUE	BLUE	COORDINATE WITH FURNITURE MANUFACTURER PRIOR TO INSTALLATION. PROVIDE A 1.25" FLEX CONDUIT BETWEEN FURNITURE AND WALL.	
AP	VIDEO SURVEILLANCE CAMERA (OWNER FURNISHED)	2G	AS NOTED	SEE FLOOR PLANS	1-PORT BISCUIT BOX	RJ-45	1			CAT-6	BLUE	BLUE	CAT-6 FOR INDOOR OR BUILDING ATTACHED CAMERAS. HYBRID CABLING FOR SITE CAMERAS.	

STANDARD ABBREVIATIONS

- APC/ARF/AF/GRF - ABOVE FINISHED CEILING/FLOOR/GRADE/RAISED FLOOR
 AP - ACCESS POINT
 ARCH - ARCHITECT/ARCHITECTURAL
 BCKBD - BACKBOARD
 BFC - BELOW FINISHED CEILING
 C - CONDUIT
 CONN - CONNECTION
 CKT - CIRCUIT
 CLG - CEILING
 EC - ELECTRICAL CONTRACTOR
 EMT - ELECTRICAL METALLIC TUBING
 EQUIP - EQUIPMENT
 EXIST - EXISTING
 F - FIBER
 FA - FIRE ALARM
 FOC - FIBER OPTIC CABLING
 G - GROUND
 HC - HORIZONTAL CROSS-CONNECT
 IDC - INSTALLATION DISPLACEMENT CONNECTOR
 IDS - INTRUSION DETECTION SYSTEM
 JB - JUNCTION BOX
 MM - MULTI-MODE
 MTD - MOUNTED
 NIC - NOT IN CONTRACT
 NTS - NOT TO SCALE
 OC - ON CENTER
 OFCI - OWNER FURNISHED, CONTRACTOR INSTALLED
 OSP - OUTSIDE PLANT
 PNL - PANEL
 PR - PAIR
 SPEC - SPECIFICATION
 RR - RISER RATED
 SM - SINGLE MODE
 ST - STRAND
 SW - SWITCH
 TGB - TELECOM GROUNDING BUS BAR
 TMGB - TELECOM MAIN GROUNDING BUS BAR
 WP - WEATHERPROOF
 UON - UNLESS OTHERWISE NOTED
 XFMR - TRANSFORMER

LOW VOLTAGE SYMBOLS LEGEND



LABELING REQUIREMENTS - ANSI-TIA 606-C

EQUIPMENT LOCATION AND SIZE ARE OUT OF SCALE FOR CLARITY. PORTIONS OF CABLE MANAGEMENT NOT SHOWN FOR CLARITY.

- ROOM IDENTIFIER - PROVIDE A PLASTIC ENGRAVED LABEL WITH TEXT 2" HIGH. FORMAT SHALL BE "####".** WHERE #### REPRESENTS THE ROOM NUMBER OF THE TELECOMMUNICATIONS SPACE. FOR EXAMPLE : A1020 = AMENITIES BUILDING FLOOR TELECOM ROOM
- BACKBONE CABLE - PROVIDE A MACHINE PRINTED LABEL SECURED WITH SHRINK WRAP TO EACH BACKBONE CABLE. FORMAT SHALL BE "####1####2 - N"** WHERE ####1 IS THE ORIGINATOR TS AND ####2 IS THE TERMINATION TS AND N IS THE CABLE NUMBER. FOR EXAMPLE : "A1020/A2020-1" = CABLE 1 ROUTED BETWEEN A1020 ON FIRST FLOOR AND A2020 ON THE SECOND FLOOR.
- GROUND BUS - PROVIDE A MACHINE PRINTED LABEL PERMANENTLY FIXED TO THE BUS BAR. FORMAT SHALL BE "####-TGB"** WHERE TS IS THE TS THAT CONTAINS THE TGB. FOR EXAMPLE : "A1020-TGB" = TELECOM SPACE A1020 TELECOM GROUNDING BUS BAR.
- PATCH PANELS - PROVIDE MACHINE PRINTED LABELS PERMANENTLY FIXED TO THE PATCH PANEL. FORMAT SHALL BE "AN"** WHERE A IS THE PATCH PANEL ALPHA NUMERIC ID AND N IS THE PATCH PANEL'S PORT NUMBER. FOR EXAMPLE "A07" = PATCH PANEL A PORT POSITION 07.
- HORIZONTAL CABLE - PROVIDE MACHINE PRINTED LABEL SECURED WITH SHRINK WRAP TO EACH END OF EVERY HORIZONTAL CABLE.** WHERE THE CABLE IS HOMERUN. FORMAT SHALL "####-N-A-N". WHERE #### IS THE TS IDENTIFIER AND N-A-N IS THE TERMINATION LOCATION. FOR EXAMPLE "A1020-1-B-01" = A1020, RACK 1, PATCH PANEL B, PORT 01. WHERE THE CABLE IS RUN TO A CONSOLIDATION POINT. FORMAT SHALL "FS-N-N". WHERE FS IS THE TS IDENTIFIER AND N-N IS THE TERMINATION LOCATION. FOR EXAMPLE "A1020-1-01" = A1020, CONSOLIDATION POINT 1, PORT 01.



CAPE FEAR FD STONEMASTER



101 NORTH THIRD STREET, SUITE 500
WILMINGTON, NORTH CAROLINA 28401
TEL. 910.790.3111 FAX. 910.790.9901
WWW.LS3P.COM

NHC Government Center 7702-190810

NOT FOR CONSTRUCTION
 NEW HANOVER COUNTY
 GOVERNMENT CENTER
 GOVERNMENT CENTER DRIVE
 WILMINGTON, NC 28403
 LS3P PROJECT: 7702-190810

DATE DESCRIPTION

DATE	DESCRIPTION

SHEET NAME:
TELECOM LEGEND
AND NOTES

DATE:
CURRENT: 2020.11.20

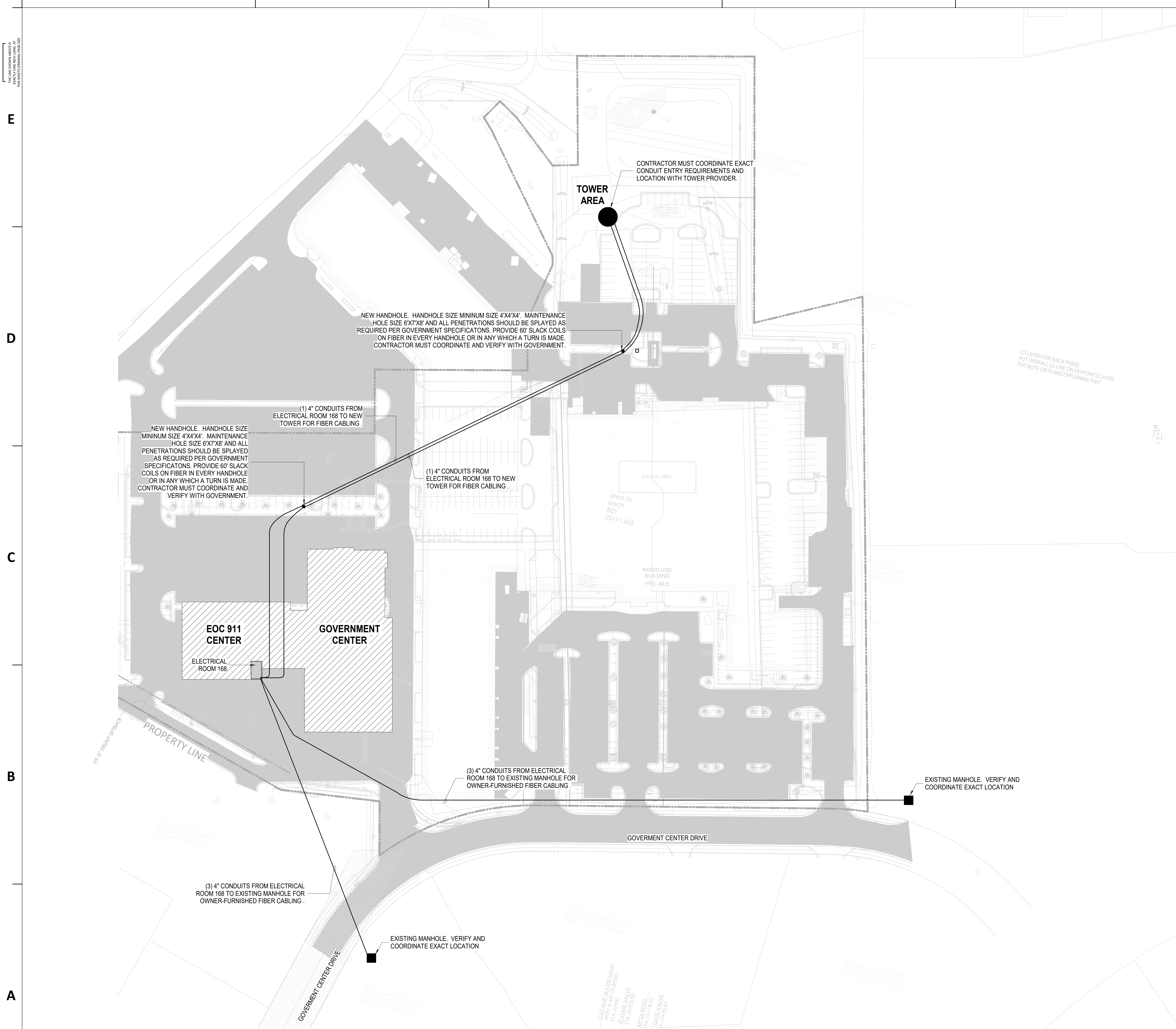
TI GMP SET

SHEET:

T-001

TI GMP SET

Newcomb & Boyd
CONSULTANTS AND ENGINEERS
Consulting Engineering Group
5425 Page Rd
Suite 215
Durham, NC 27703
T 919 783-7812
Contact: Paul J. Kitchens
N&B PROJECT: 19N342
Firm License No. F-0312



- GENERAL NOTES:**
- REFER TO CIVIL PLANS FOR LOCATIONS OF OTHER UTILITIES. FIELD VERIFY AND COORDINATE LOCATIONS OF EXISTING UTILITIES PRIOR TO INSTALLATION.
 - UNDERGROUND CONDUIT ROUTES SHOWN ARE DIAGRAMMATIC AND FINAL ROUTES SHOULD BE COORDINATED WITH IN-FIELD CONDITIONS AND SURROUNDING UTILITIES IDENTIFIED ON THE CIVIL PLANS.
 - CONDUITS ENTERING INTO THE EXISTING MANHOLE SHALL TERMINATE IN THE LOWEST AVAILABLE WINDOW AND ALWAYS SLOPE TOWARDS INTO THE MANHOLE STRUCTURE TO PREVENT WATER BACK-FLOW INTO THE BUILDING.
 - CONDUITS ENTERING INTO THE BUILDING SHALL SLOPE AWAY FROM THE BUILDING ENTRANCE ROOM AND TOWARD THE UNDERGROUND MANHOLE / HAND HOLE STRUCTURES.



CAPE FEAR FD STONEWATER



101 NORTH THIRD STREET, SUITE 500
WILMINGTON, NORTH CAROLINA 28401
TEL. 910.790.3111 FAX. 910.790.9901
WWW.LS3P.COM

NOT FOR
CONSTRUCTION

NHC Government Center 7702-190810

NEW HANOVER COUNTY
GOVERNMENT CENTER
GOVERNMENT CENTER DRIVE
WILMINGTON, NC 28403
LS3P PROJECT: 7702-190810

DATE	DESCRIPTION

SHEET NAME:
TELECOM - SITE PLAN

DATE:
CURRENT: 2020.11.20
TI GMP SET

SHEET:
T-100

Newcomb & Boyd
CONSULTANTS AND ENGINEERS
Consulting Engineering Group
5425 Page Rd
Suite 215
Durham, NC 27703
T 919 783-7812
Contact: Paul J. Kitchens
N&B PROJECT: 19N342
Firm License No. F-0312

THE SEVERAL ADJUSTMENTS
INDICATED BY THIS SYMBOL
SHALL BE MADE TO THE
DIMENSIONS AS SHOWN ON
THIS DRAWING.

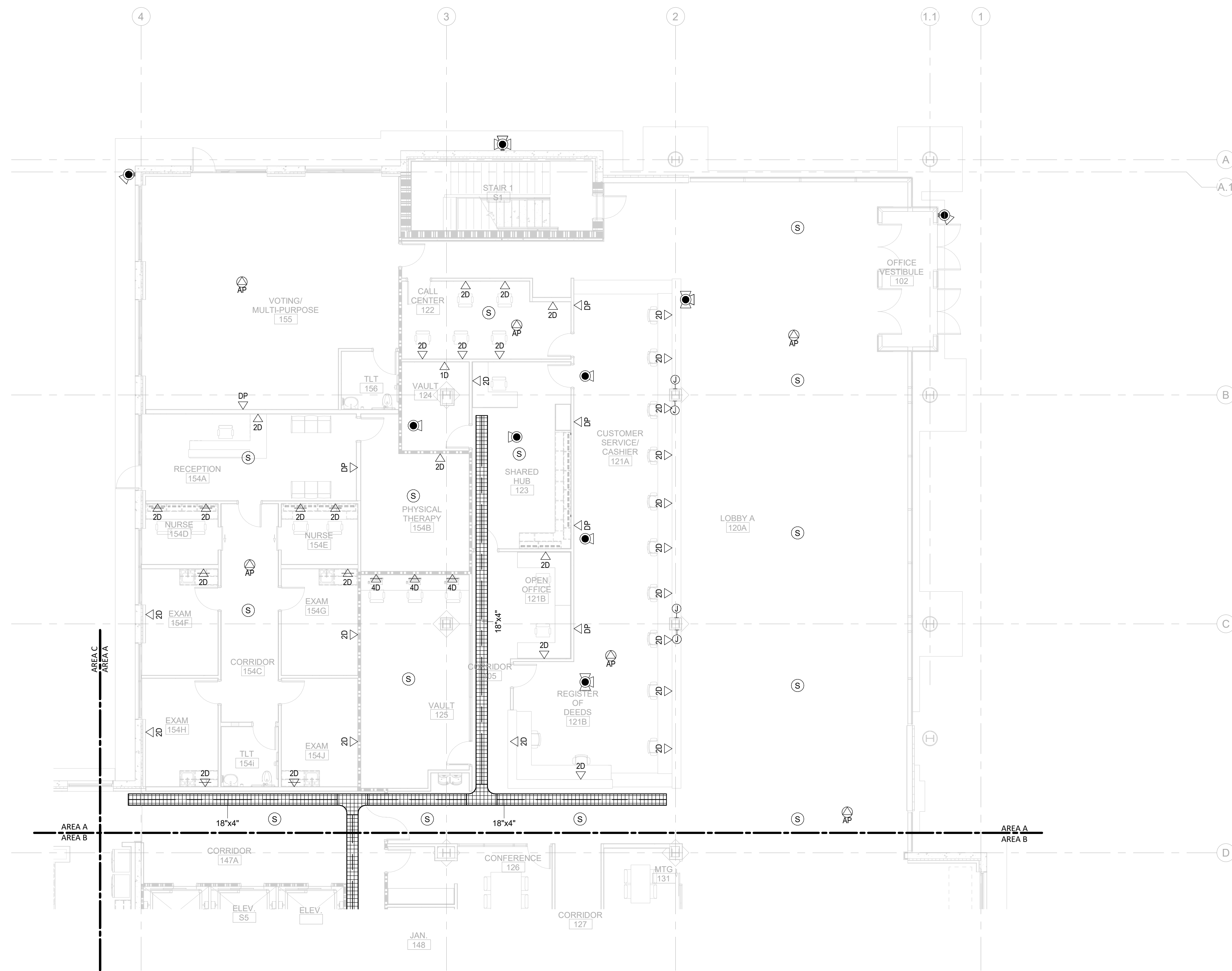
E

D

C

B

A



GENERAL NOTES:

1. ALL HORIZONTAL CABLING ON THIS SHEET SHALL TERMINATE IN HORIZONTAL CABLING RACK IN COMM ROOM 103.
2. COORDINATE OUTLET IN FURNITURE WITH FURNITURE PROVIDER AND ELECTRICAL DRAWINGS. OUTLET MAY BE MOUNTED IN COMMUNICATIONS RACEWAY IF PROVIDED WITH FURNITURE.



CAPE FEAR FD STONEWATER



101 NORTH THIRD STREET, SUITE 500
WILMINGTON, NORTH CAROLINA 28401
TEL. 910.790.3111 FAX. 910.790.9901
WWW.LS3P.COM

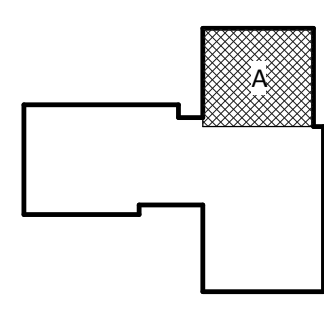
NOT FOR CONSTRUCTION

NHC Government Center 7702-190810

NEW HANOVER COUNTY
GOVERNMENT CENTER
GOVERNMENT CENTER DRIVE
WILMINGTON, NC 28403
LS3P PROJECT: 7702-190810

DATE	DESCRIPTION

KEY PLAN:



SHEET NAME:
TELECOM FLOOR
PLAN - LEVEL 1 - AREA
A

DATE:
CURRENT: 2020.11.20
TI GMP SET

SHEET:
T-101A

Newcomb & Boyd
CONSULTANTS AND ENGINEERS
Consulting Engineering Group
5425 Page Rd
Suite 215
Durham, NC 27703
T 919 783-7812
Contact: Paul J. Kitchens
N&B PROJECT: 19N342
Firm License No. F-0312



E

D

C

B

A

THE USER ASSUMES ALL LIABILITY FOR ANY DAMAGE TO THE ORIGINAL DRAWING OR THE INFORMATION CONTAINED THEREIN.



GENERAL NOTES:

- 1. ALL HORIZONTAL CABLING ON THIS SHEET SHALL TERMINATE IN HORIZONTAL CABLING RACK IN COMM ROOM 103.
- 2. COORDINATE OUTLET IN FURNITURE WITH FURNITURE PROVIDER AND ELECTRICAL DRAWINGS. OUTLET MAY BE MOUNTED IN COMMUNICATIONS RACEWAY IF PROVIDED WITH FURNITURE.

TELCOM KEY NOTES:

- (1) (4) 4" FIRESTOPPED SLEEVES



CAPE FEAR FD STONEWATER



101 NORTH THIRD STREET, SUITE 500
WILMINGTON, NORTH CAROLINA 28401
TEL. 910.790.3111 FAX. 910.790.9901
WWW.LS3P.COM

NOT FOR CONSTRUCTION

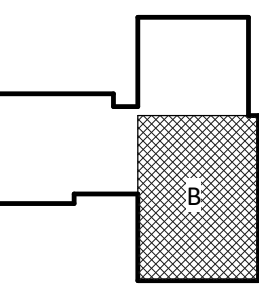
NHC Government Center 7702-190810

**NEW HANOVER COUNTY
GOVERNMENT CENTER**
GOVERNMENT CENTER DRIVE
WILMINGTON, NC 28403

LS3P PROJECT: 7702-190810

DATE	DESCRIPTION

KEY PLAN:



SHEET NAME:
**TELCOM FLOOR
PLAN - LEVEL 1 - AREA
B**

DATE:
CURRENT: 2020.11.20
TI GMP SET

SHEET:
T-101B

Newcomb & Boyd
CONSULTANTS AND ENGINEERS
Consulting Engineering Group
5425 Page Rd
Suite 215
Durham, NC 27703
T 919 783-7812
Contact: Paul J. Kitchens
N&B PROJECT: 19N342
Firm License No. F-0312



1/8" = 1'-0"

11/19/2020 2:46:05 PM

1
T-101B
TELCOM TI FLOOR PLAN - PARTIAL - LEVEL 1 - AREA B

1

2

3

4

5

6

TI GMP SET

THE USER ASSUMES ALL RESPONSIBILITY FOR THE ACCURACY OF THE INFORMATION SHOWN ON THIS DRAWING.

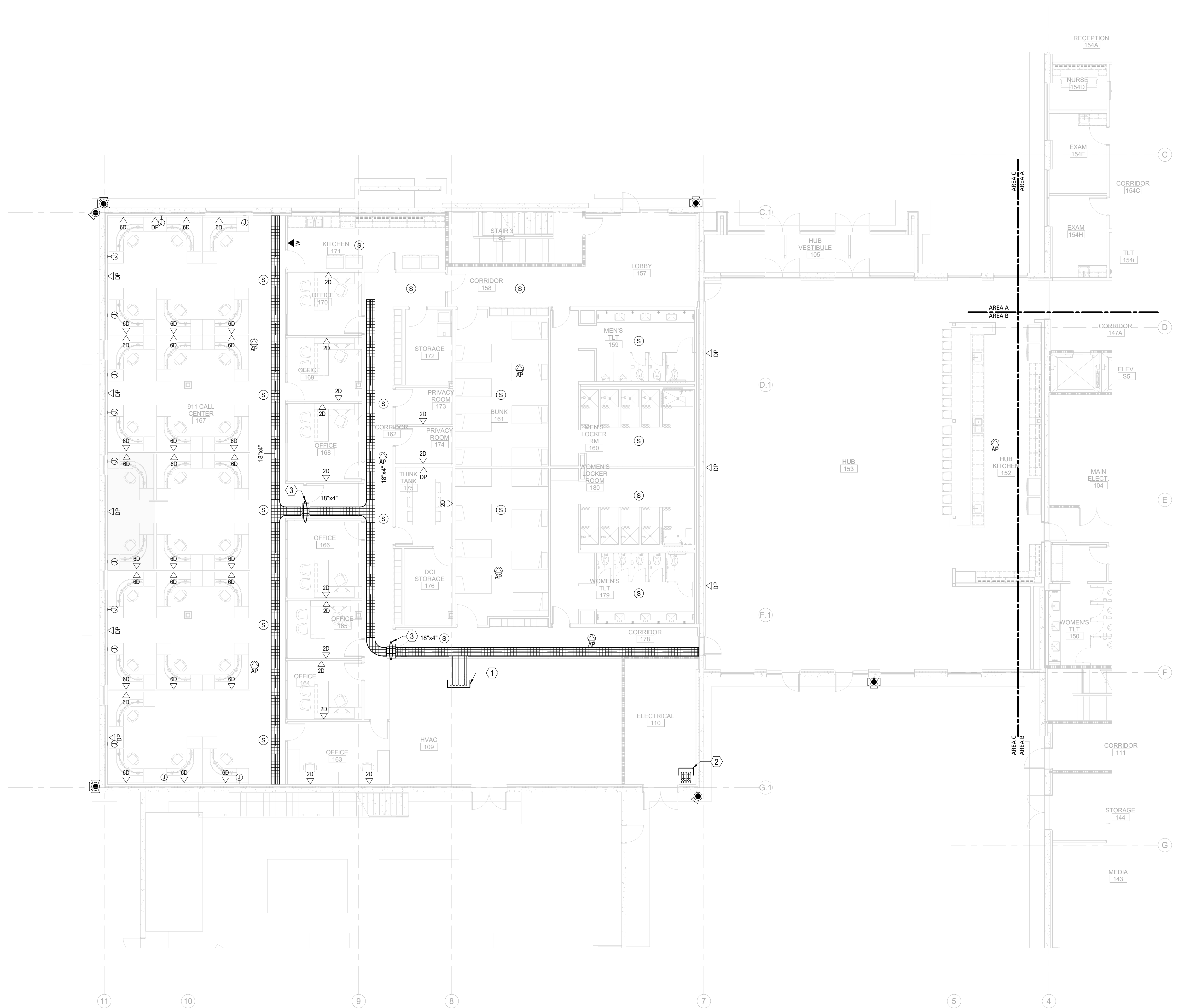
E

D

C

B

A



GENERAL NOTES:

1. ALL HORIZONTAL CABLING ON THIS SHEET SHALL TERMINATE IN HORIZONTAL CABLING CABINETS IN SERVER ROOM 206.
2. COORDINATE OUTLET IN FURNITURE WITH FURNITURE PROVIDER AND ELECTRICAL DRAWINGS. OUTLET MAY BE MOUNTED IN COMMUNICATIONS RACEWAY IF PROVIDED WITH FURNITURE.

TELCOM KEY NOTES:

- ① (6) 4" CONDUITS FROM SERVER ROOM ABOVE FOR LEVEL 1 HORIZONTAL DISTRIBUTION
- ② UNDERGROUND CONDUITS PATHWAY TO FLOOR ABOVE.
-(6) 4" CONDUITS FOR SERVICE PROVIDER FIBER.
-(2) 4" CONDUITS FOR FIBER REDUNDANCY TO TOWER AREA.
SEE TELCOM SITE PLAN FOR DETAILS.
- ③ (6) 4" FIRESTOPPED SLEEVES



CAPE FEAR FD STONEWATER



101 NORTH THIRD STREET, SUITE 500
WILMINGTON, NORTH CAROLINA 28401
TEL. 910.790.3111 FAX. 910.790.9901
WWW.LS3P.COM

NOT FOR CONSTRUCTION

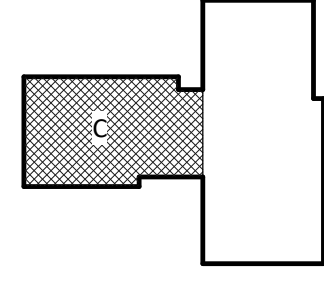
NHC Government Center 7702-190810

**NEW HANOVER COUNTY
GOVERNMENT CENTER**
GOVERNMENT CENTER DRIVE
WILMINGTON, NC 28403

LS3P PROJECT: 7702-190810

DATE	DESCRIPTION

KEY PLAN:

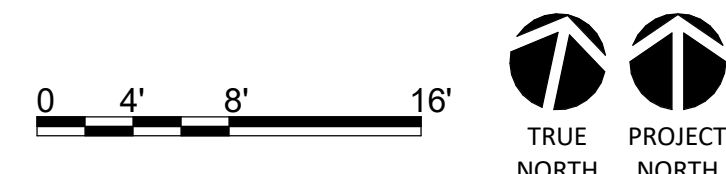


SHEET NAME:
**TELCOM FLOOR
PLAN - LEVEL 1 - AREA
C**

DATE:
CURRENT: **2020.11.20**
TI GMP SET

SHEET:
T-101C

Newcomb & Boyd
CONSULTANTS AND ENGINEERS
Consulting Engineering Group
5425 Page Rd
Suite 215
Durham, NC 27703
T 919 783-7812
Contact: Paul J. Kitchens
N&B PROJECT: 19N342
Firm License No. F-0312



1/8" = 1'-0"

11/19/2020 2:46:14 PM
1
T-101C
TELCOM TI FLOOR PLAN - PARTIAL - LEVEL 1 - AREA C

1

2

3

4

5

6

TI GMP SET

THE USER SHALL VERIFY THE ACCURACY OF ALL DIMENSIONS AND THE INFORMATION PROVIDED HEREON.

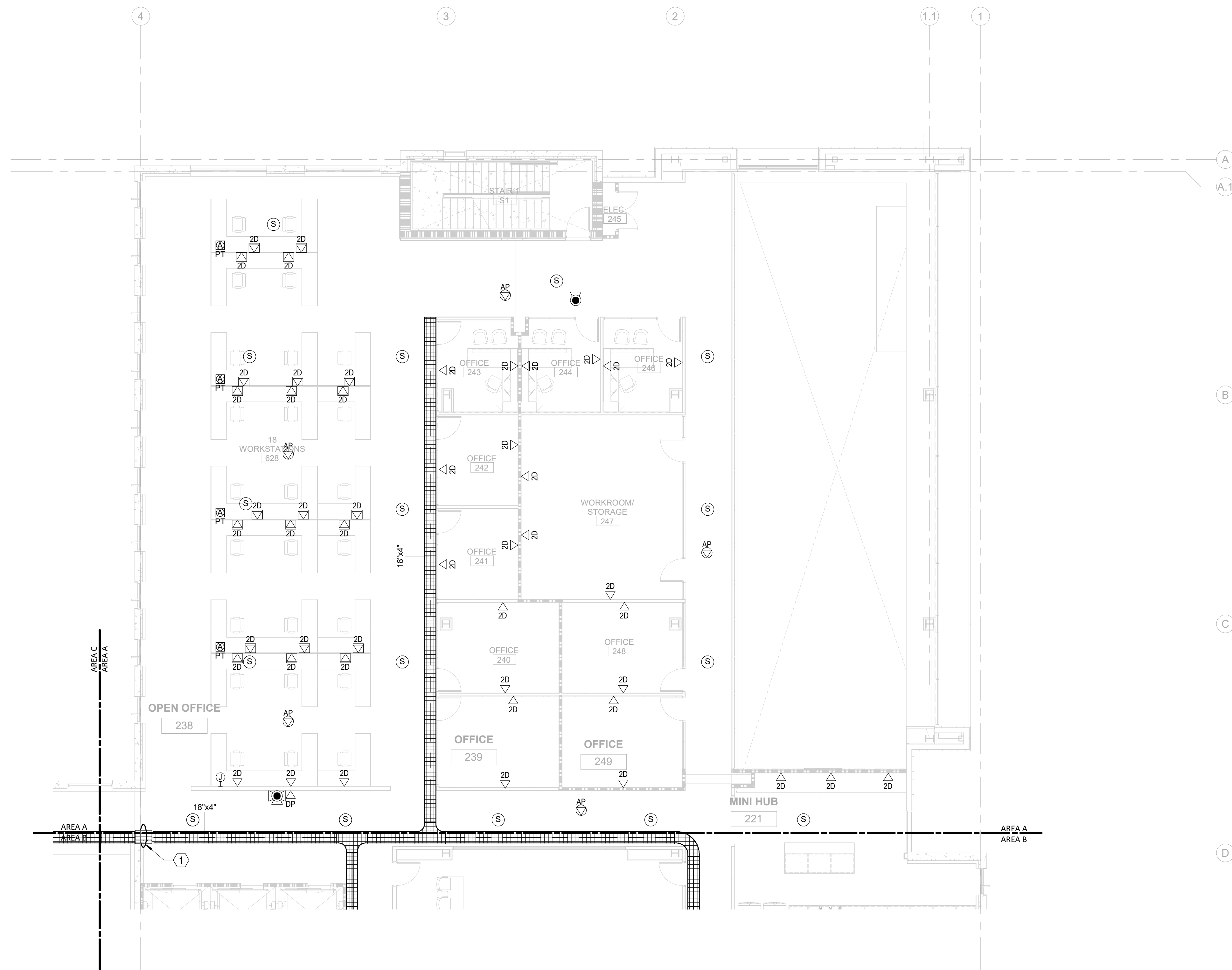
E

D

C

B

A



GENERAL NOTES:

1. ALL HORIZONTAL CABLING ON THIS SHEET SHALL TERMINATE IN HORIZONTAL CABLING RACK IN COMM ROOM 203.
2. COORDINATE OUTLET IN FURNITURE WITH FURNITURE PROVIDER AND ELECTRICAL DRAWINGS. OUTLET MAY BE MOUNTED IN COMMUNICATIONS RACEWAY IF PROVIDED WITH FURNITURE.

TELCOM KEY NOTES:

- ① (6) 4" FIRESTOPPED SLEEVES



CAPE FEAR FD STONEWATER



101 NORTH THIRD STREET, SUITE 500
WILMINGTON, NORTH CAROLINA 28401
TEL. 910.790.3111 FAX. 910.790.9901
WWW.LS3P.COM

NOT FOR CONSTRUCTION

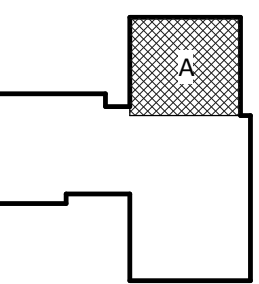
NHC Government Center 7702-190810

**NEW HANOVER COUNTY
GOVERNMENT CENTER**
GOVERNMENT CENTER DRIVE
WILMINGTON, NC 28403

LS3P PROJECT: 7702-190810

DATE	DESCRIPTION

KEY PLAN:

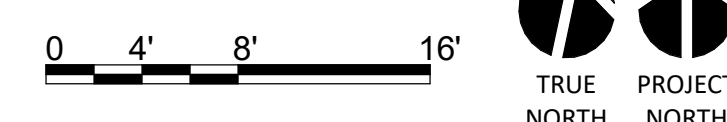


SHEET NAME:
TELCOM FLOOR
PLAN - LEVEL 2 - AREA
A

DATE:
CURRENT: 2020.11.20
TI GMP SET

SHEET:
T-102A

Newcomb & Boyd
CONSULTANTS AND ENGINEERS
Consulting Engineering Group
5425 Page Rd
Suite 215
Durham, NC 27703
T 919 783-7812
Contact: Paul J. Kitchens
N&B PROJECT: 19N342
Firm License No. F-0312



THE USER ASSUMES ALL RESPONSIBILITY FOR THE PROPER USE OF THIS DRAWING.

E

D

C

B

A



GENERAL NOTES:

1. ALL HORIZONTAL CABLING ON THIS SHEET SHALL TERMINATE IN HORIZONTAL CABLING RACK IN COMM ROOM 203.
2. COORDINATE OUTLET IN FURNITURE WITH FURNITURE PROVIDER AND ELECTRICAL DRAWINGS. OUTLET MAY BE MOUNTED IN COMMUNICATIONS RACEWAY IF PROVIDED WITH FURNITURE.

TELCOM KEY NOTES:

- ① (6) 4" FIRESTOPPED SLEEVES



CAPE FEAR FD STONEWATER



101 NORTH THIRD STREET, SUITE 500
 WILMINGTON, NORTH CAROLINA 28401
 TEL. 910.790.3111 FAX. 910.790.9901
 WWW.LS3P.COM

NOT FOR CONSTRUCTION

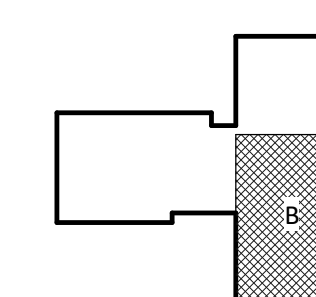
NHC Government Center 7702-190810

**NEW HANOVER COUNTY
 GOVERNMENT CENTER**
 GOVERNMENT CENTER DRIVE
 WILMINGTON, NC 28403

LS3P PROJECT: 7702-190810

DATE	DESCRIPTION

KEY PLAN:



SHEET NAME:
 TELECOM FLOOR
 PLAN - LEVEL 2 - AREA
 B

DATE:
 CURRENT: 2020.11.20
 TI GMP SET

SHEET:
T-102B

Newcomb & Boyd
 CONSULTANTS AND ENGINEERS
 Consulting Engineering Group
 5425 Page Rd
 Suite 215
 Durham, NC 27703
 T 919 783-7812
 Contact: Paul J. Kitchens
 N&B PROJECT: 19N342
 Firm License No. F-0312



11/19/2020 2:46:25 PM

1
 T-102B TELECOM TI FLOOR PLAN - PARTIAL - LEVEL 2 - AREA B

1/8" = 1'-0"

1

2

3

4

5

6

TI GMP SET

THE USER ASSUMES ALL RESPONSIBILITY FOR THE PROPER INSTALLATION AND MAINTENANCE OF THE SYSTEM.

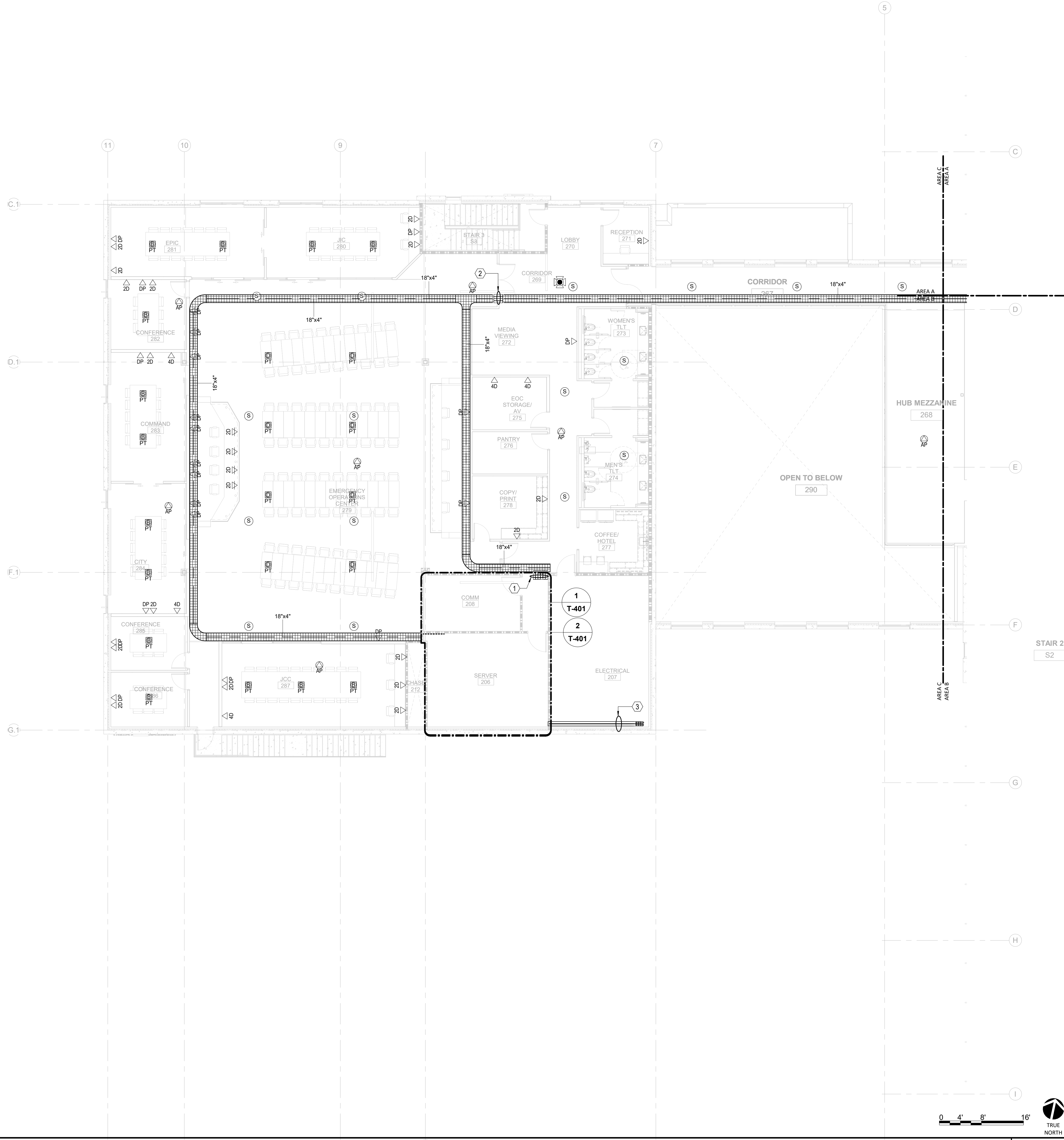
E

D

C

B

A



GENERAL NOTES:

1. ALL HORIZONTAL CABLING ON THIS SHEET SHALL TERMINATE IN HORIZONTAL CABLING CABINETS IN SERVER ROOM 206.
2. COORDINATE OUTLET IN FURNITURE WITH FURNITURE PROVIDER AND ELECTRICAL DRAWINGS. OUTLET MAY BE MOUNTED IN COMMUNICATIONS RACEWAY IF PROVIDED WITH FURNITURE.

KEYNOTES (THIS SHEET ONLY)

- ① (6) 4" FIRESTOPPED SLEEVES FOR HORIZONTAL DISTRIBUTION
- ② (4) 4" FIRESTOPPED SLEEVES
- ③ UNDERGROUND CONDUITS PATHWAY FROM FIRST FLOOR.
 - (6) 4" CONDUITS FOR SERVICE PROVIDER FIBER.
 - (2) 4" CONDUITS FOR FIBER REDUNDANCY TO TOWER AREA. SEE TELECOM SITE PLAN FOR DETAILS.



CAPE FEAR FD STONEWATER



101 NORTH THIRD STREET, SUITE 500
WILMINGTON, NORTH CAROLINA 28401
TEL. 910.790.3111 FAX. 910.790.9901
WWW.LS3P.COM

NOT FOR CONSTRUCTION

NHC Government Center 7702-190810

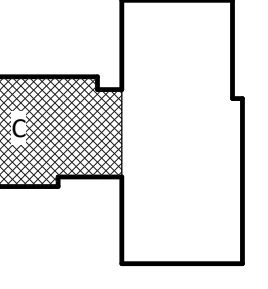
NEW HANOVER COUNTY GOVERNMENT CENTER

GOVERNMENT CENTER DRIVE
WILMINGTON, NC 28403

LS3P PROJECT: 7702-190810

Δ	DATE	DESCRIPTION

KEY PLAN:

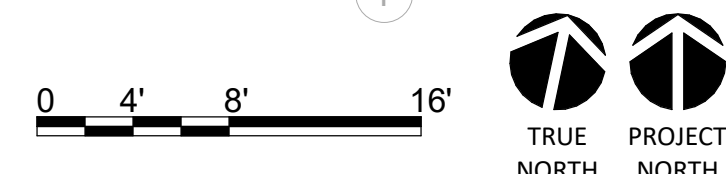


SHEET NAME:
TELECOM FLOOR PLAN - LEVEL 2 - AREA C

DATE: 2020.11.20
CURRENT: TI GMP SET

SHEET: T-102C

Newcomb & Boyd
CONSULTANTS AND ENGINEERS
Consulting Engineering Group
5425 Page Rd
Suite 215
Durham, NC 27703
T 919 783-7812
Contact: Paul J. Kitchens
N&B PROJECT: 19N342
Firm License No. F-0312



THE USER ASSUMES ALL RESPONSIBILITY FOR THE ACCURACY OF THE INFORMATION SHOWN ON THIS DRAWING.

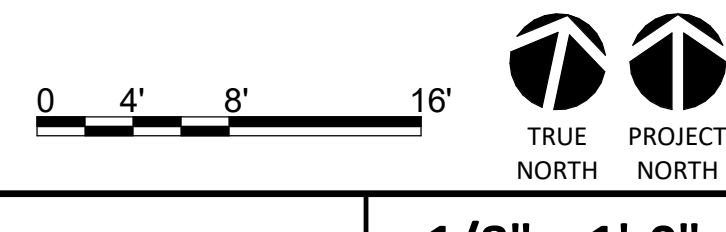
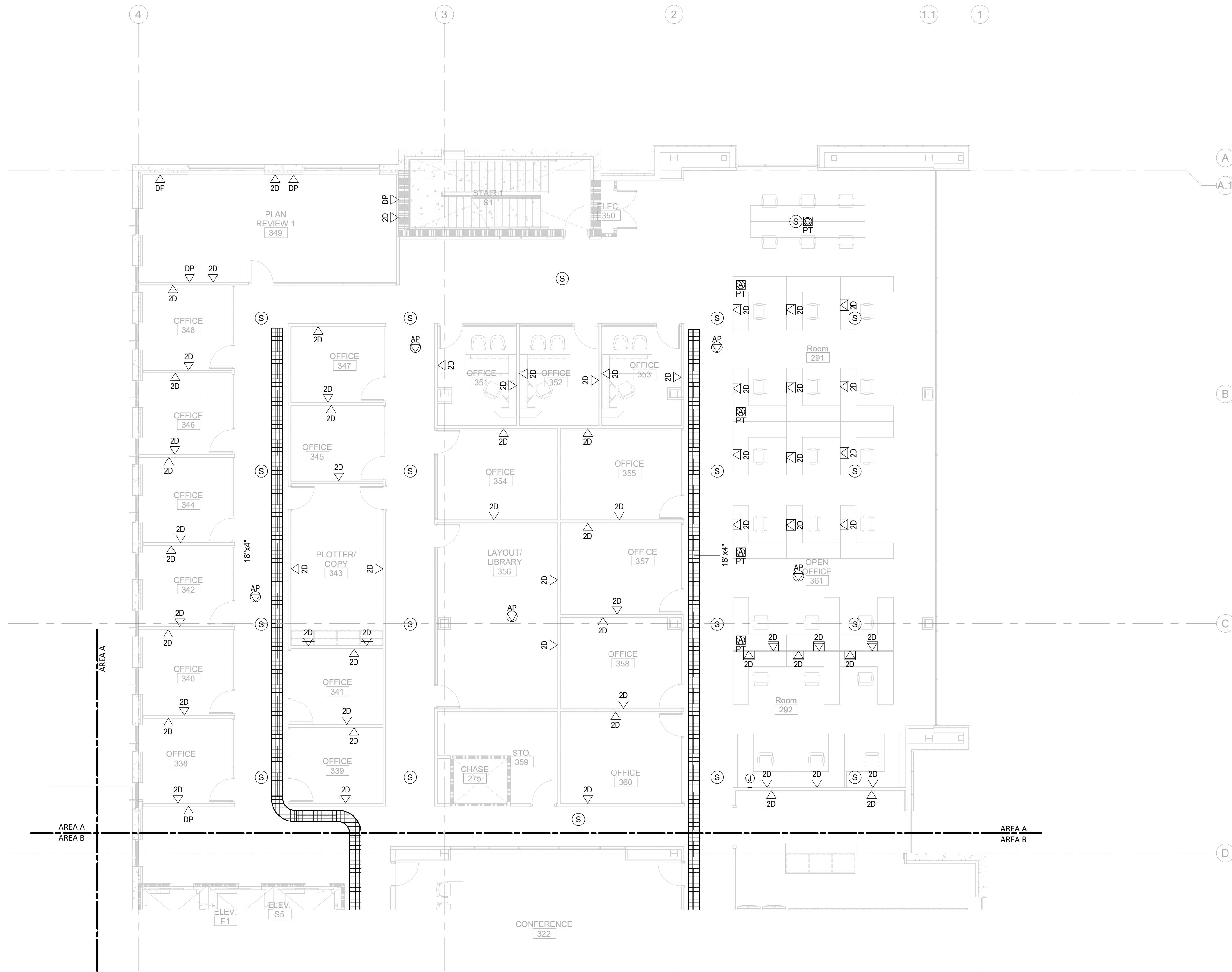
E

D

C

B

A



GENERAL NOTES:

1. ALL HORIZONTAL CABLING ON THIS SHEET SHALL TERMINATE IN HORIZONTAL CABLING RACK IN SERVER ROOM 303.
2. COORDINATE OUTLET IN FURNITURE WITH FURNITURE PROVIDER AND ELECTRICAL DRAWINGS. OUTLET MAY BE MOUNTED IN COMMUNICATIONS RACEWAY IF PROVIDED WITH FURNITURE.



CAPE FEAR FD STONEWATER



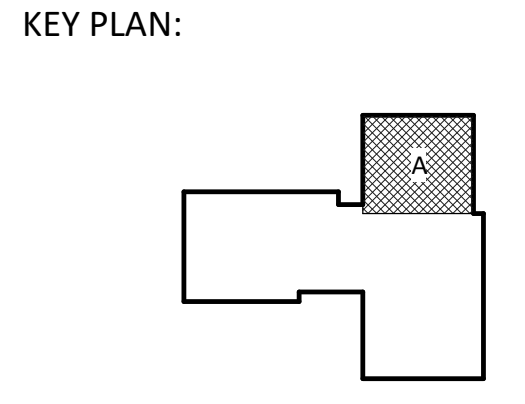
101 NORTH THIRD STREET, SUITE 500
WILMINGTON, NORTH CAROLINA 28401
TEL. 910.790.3111 FAX. 910.790.9901
WWW.LS3P.COM

NOT FOR
CONSTRUCTION

NHC Government Center 7702-190810

**NEW HANOVER COUNTY
GOVERNMENT CENTER**
GOVERNMENT CENTER DRIVE
WILMINGTON, NC 28403
LS3P PROJECT: 7702-190810

DATE	DESCRIPTION



SHEET NAME:
**TELECOM FLOOR
PLAN - LEVEL 3 - AREA A**

DATE:
CURRENT: **2020.11.20**
TI GMP SET

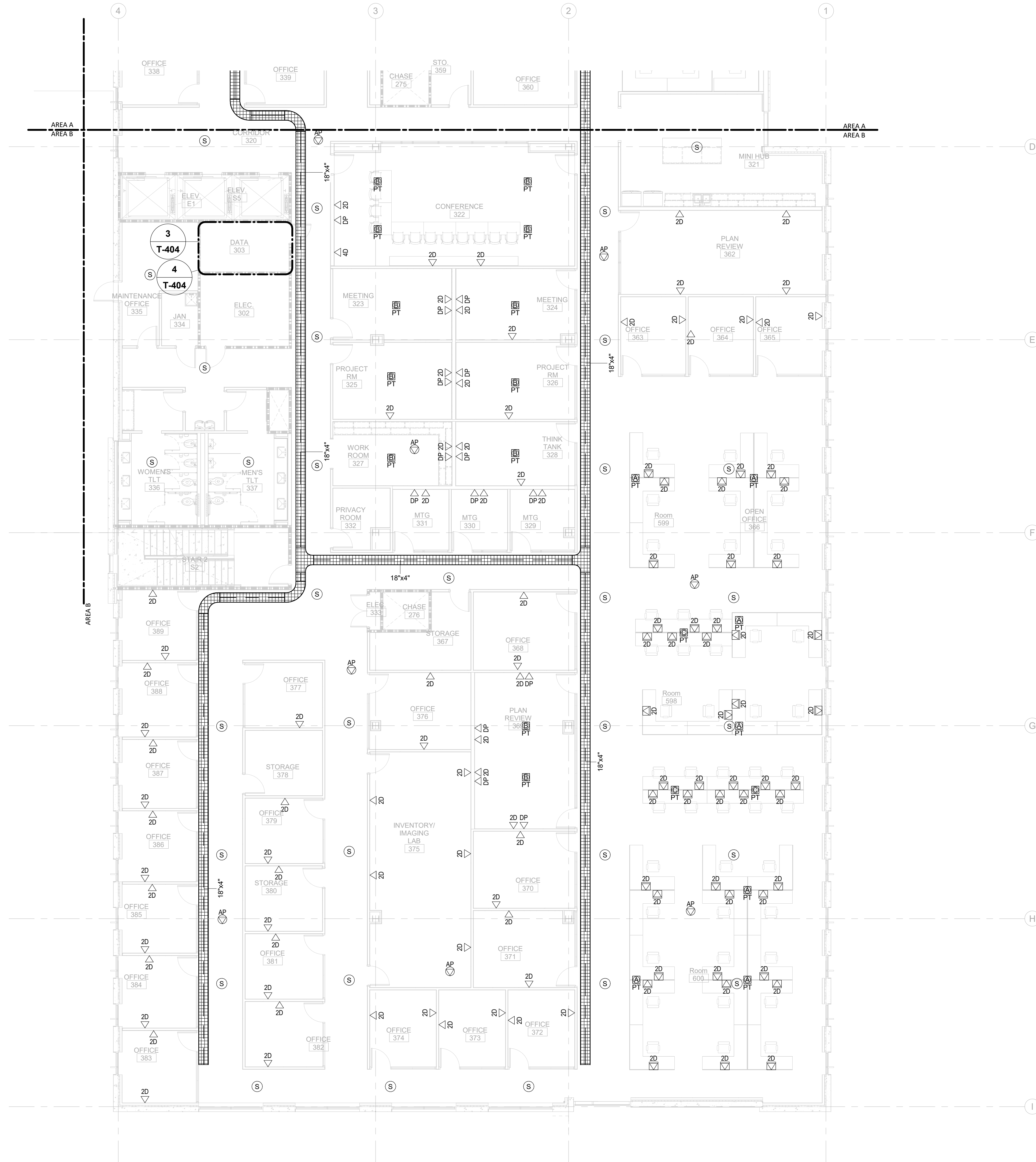
SHEET:
T-103A

Newcomb & Boyd
CONSULTANTS AND ENGINEERS
Consulting Engineering Group
5425 Page Rd
Suite 215
Durham, NC 27703
T 919 783-7812
Contact: Paul J. Kitchens
N&B PROJECT: 19N342
Firm License No. F-0312

11/19/2020 2:46:34 PM
1
T-103A
TELECOM TI FLOOR PLAN - PARTIAL - LEVEL 3 - AREA A

1/8" = 1'-0"

TI GMP SET



GENERAL NOTES:

1. ALL HORIZONTAL CABLING ON THIS SHEET SHALL TERMINATE IN HORIZONTAL CABLING RACK IN SERVER ROOM 303.
2. COORDINATE OUTLET IN FURNITURE WITH FURNITURE PROVIDER AND ELECTRICAL DRAWINGS. OUTLET MAY BE MOUNTED IN COMMUNICATIONS RACEWAY IF PROVIDED WITH FURNITURE.



CAPE FEAR FD STONEWATER



101 NORTH THIRD STREET, SUITE 500
WILMINGTON, NORTH CAROLINA 28401
TEL. 910.790.3111 FAX. 910.790.9901
WWW.LS3P.COM

NOT FOR CONSTRUCTION

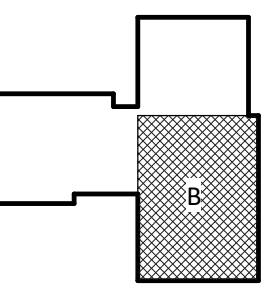
NHC Government Center 7702-190810

**NEW HANOVER COUNTY
GOVERNMENT CENTER**
GOVERNMENT CENTER DRIVE
WILMINGTON, NC 28403

LS3P PROJECT: 7702-190810

DATE	DESCRIPTION

KEY PLAN:

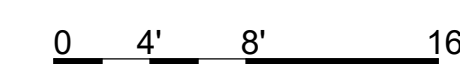


SHEET NAME:
TELECOM FLOOR
PLAN - LEVEL 3 - AREA
B

DATE:
CURRENT: 2020.11.20
TI GMP SET

SHEET:
T-103B

Newcomb & Boyd
CONSULTANTS AND ENGINEERS
Consulting Engineering Group
5425 Page Rd
Suite 215
Durham, NC 27703
T 919 783-7812
Contact: Paul J. Kitchens
N&B PROJECT: 19N342
Firm License No. F-0312



1/8" = 1'-0"



CAPE FEAR FD STONEWATER



101 NORTH THIRD STREET, SUITE 500
WILMINGTON, NORTH CAROLINA 28401
TEL. 910.790.3111 FAX. 910.790.9901
WWW.LS3P.COM

NOT FOR
CONSTRUCTION

NHC Government Center 7702-190810

**NEW HANOVER COUNTY
GOVERNMENT CENTER**
GOVERNMENT CENTER DRIVE
WILMINGTON, NC 28403

LS3P PROJECT: 7702-190810

Δ DATE	DESCRIPTION

SHEET NAME:
TELECOM - 911 EQUIP.
& SERVER ROOM
PART PLANS

DATE:
CURRENT: 2020.11.20
TI GMP SET

SHEET:
T-401

TI GMP SET

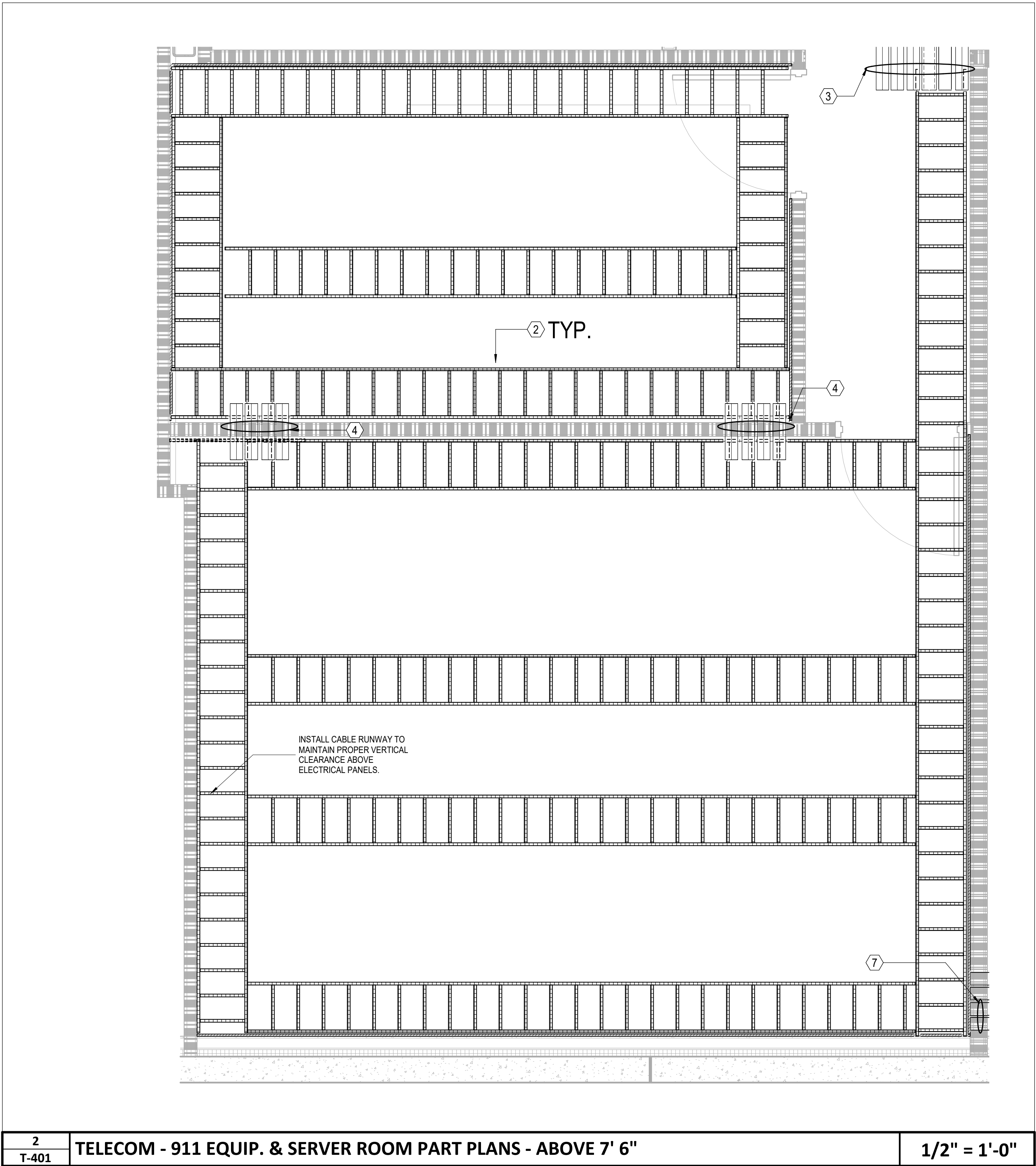
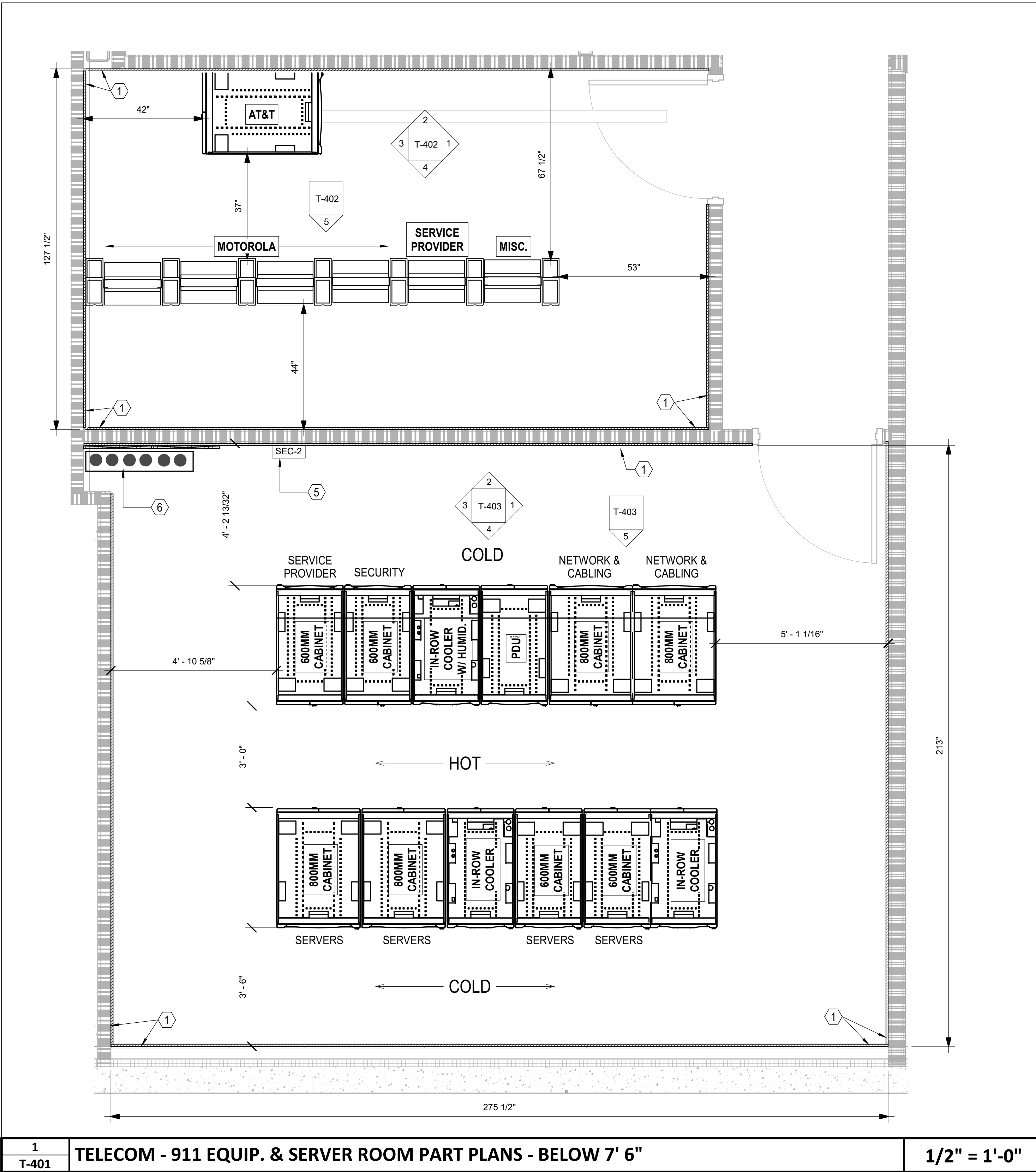
Newcomb & Boyd
CONSULTANTS AND ENGINEERS
Consulting Engineering Group
5425 Page Rd
Suite 215
Durham, NC 27703
T 919 783-7812
Contact: Paul J. Kitchens
N&B PROJECT: 19N342
Firm License No. F-0312

GENERAL NOTES (THIS SHEET ONLY)

- 1. AT ALL VERTICAL SLEEVE LOCATIONS, FURNISH AND INSTALL 24"W CABLE RUNWAY MOUNTED VERTICALLY TO ALLOW FOR PROPER SUPPORT OF CABLES TO FLOOR BELOW.

KEYNOTES (THIS SHEET ONLY)

- ① 0.75" PLYWOOD BACKBOARD
- ② 18"W CABLE RUNWAY
- ③ (6) 4" FIRESTOPPED SLEEVES FOR HORIZONTAL DISTRIBUTION
- ④ (4) 4" FIRESTOPPED SLEEVES FOR HORIZONTAL DISTRIBUTION
- ⑤ SECURITY PANEL BY OWNER'S SECURITY INTEGRATOR
- ⑥ (6) 4" CONDUITS FROM SERVER ROOM TO FLOOR BELOW FOR LEVEL 1 HORIZONTAL DISTRIBUTION
- ⑦ UNDERGROUND CONDUITS PATHWAY FROM FIRST FLOOR.
(6) 4" CONDUITS FOR SERVICE PROVIDER FIBER
(2) 4" CONDUITS FOR FIBER REDUNDANCY TO TOWER AREA.
SEE TELECOM SITE PLAN FOR DETAILS.



SERVER ROOM EQUIPMENT

SERVER ROOM EQUIPMENT PROVIDED AS PART OF CUSTOMIZED SOLUTION THAT INCLUDES CABINETS, TERMINATION ACCESSORIES, CABLE MANAGEMENT, HOT AISLE CONTAINMENT, UPS AND BATTERY CABINET AS WELL AS OTHER HARDWARE AND ACCESSORIES. APC QUOTE/PART NUMBER ISX0001852536-0005

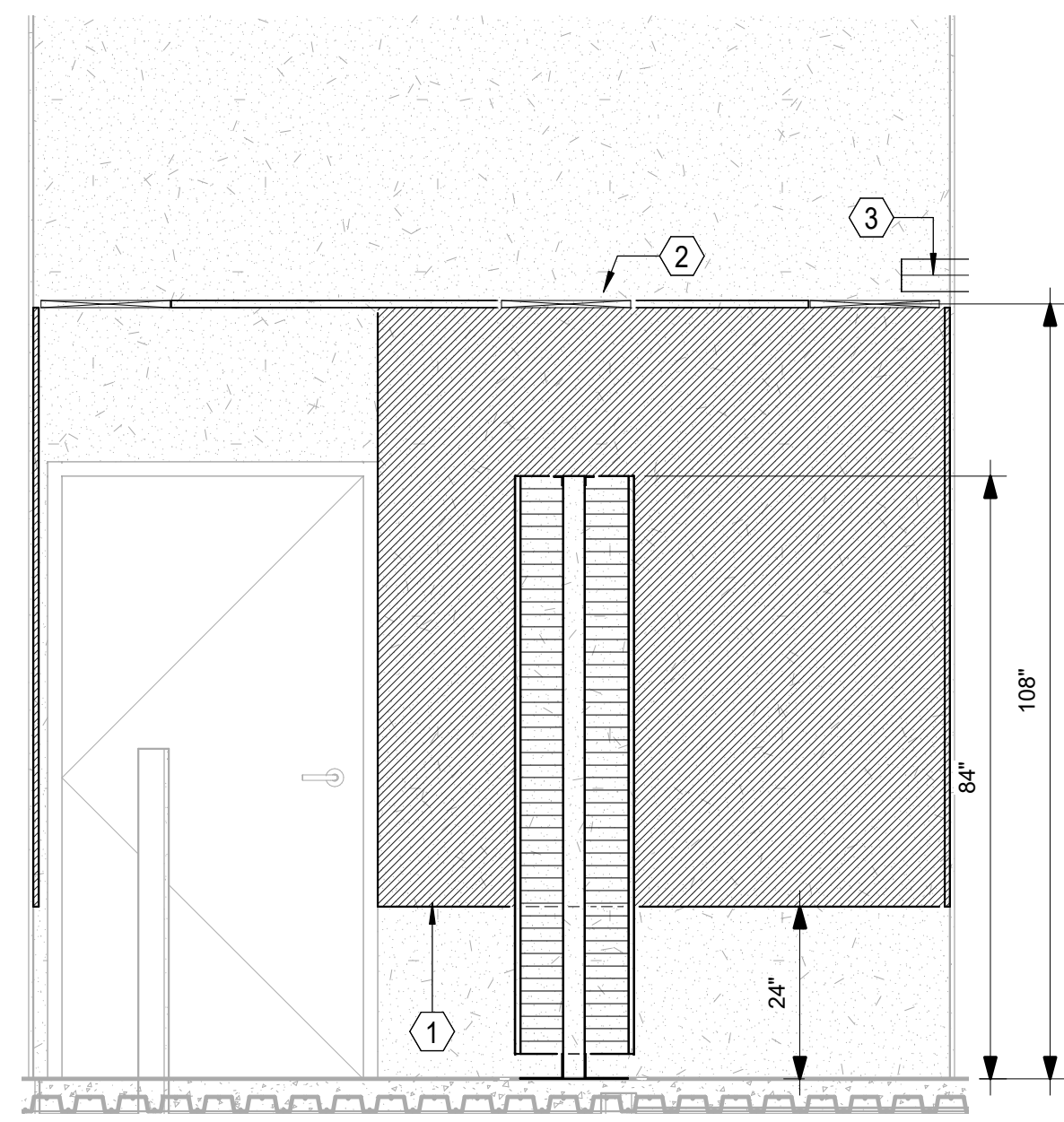
SOLUTION NUMBER : ISX0001852536-0005
DESIGN NAME : ISXD DESIGN 1
DESIGN NOTES FOR ISXD DESIGN 1

FOR MORE INFORMATION SEE BOM MATERIALS FILE INCLUDED WITH THE TELECOM DRAAWINGS OR/AND CONTACT APC REPRESENTATIVE :
JIMMY JACK - TEL: 803 833 3046
JJACK@CRITICALCOMPONENTS.NET

11/19/2020 2:46:57 PM

THE USER ASSUMES ALL RESPONSIBILITY FOR THE ACCURACY OF THE INFORMATION CONTAINED HEREIN.

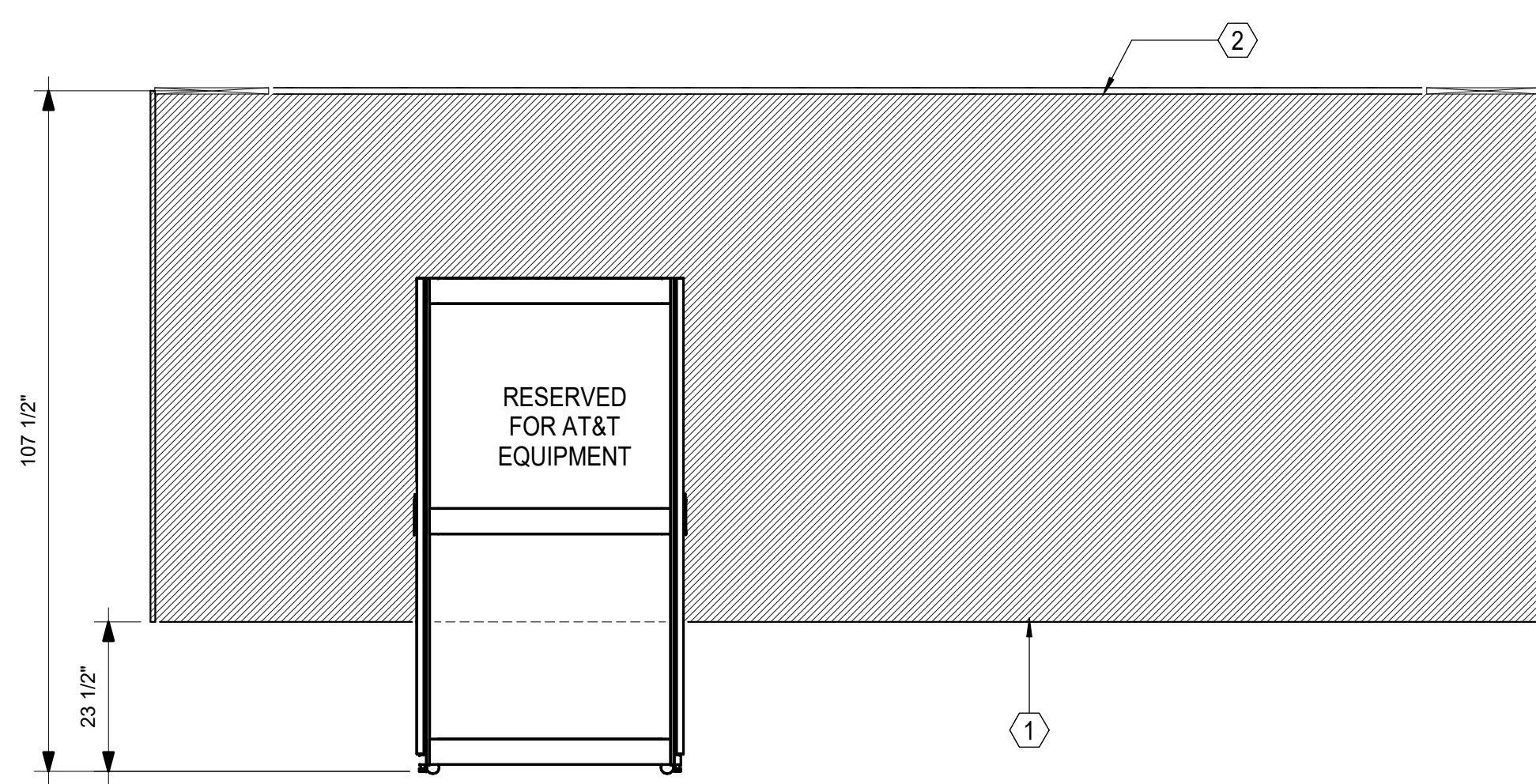
E



D

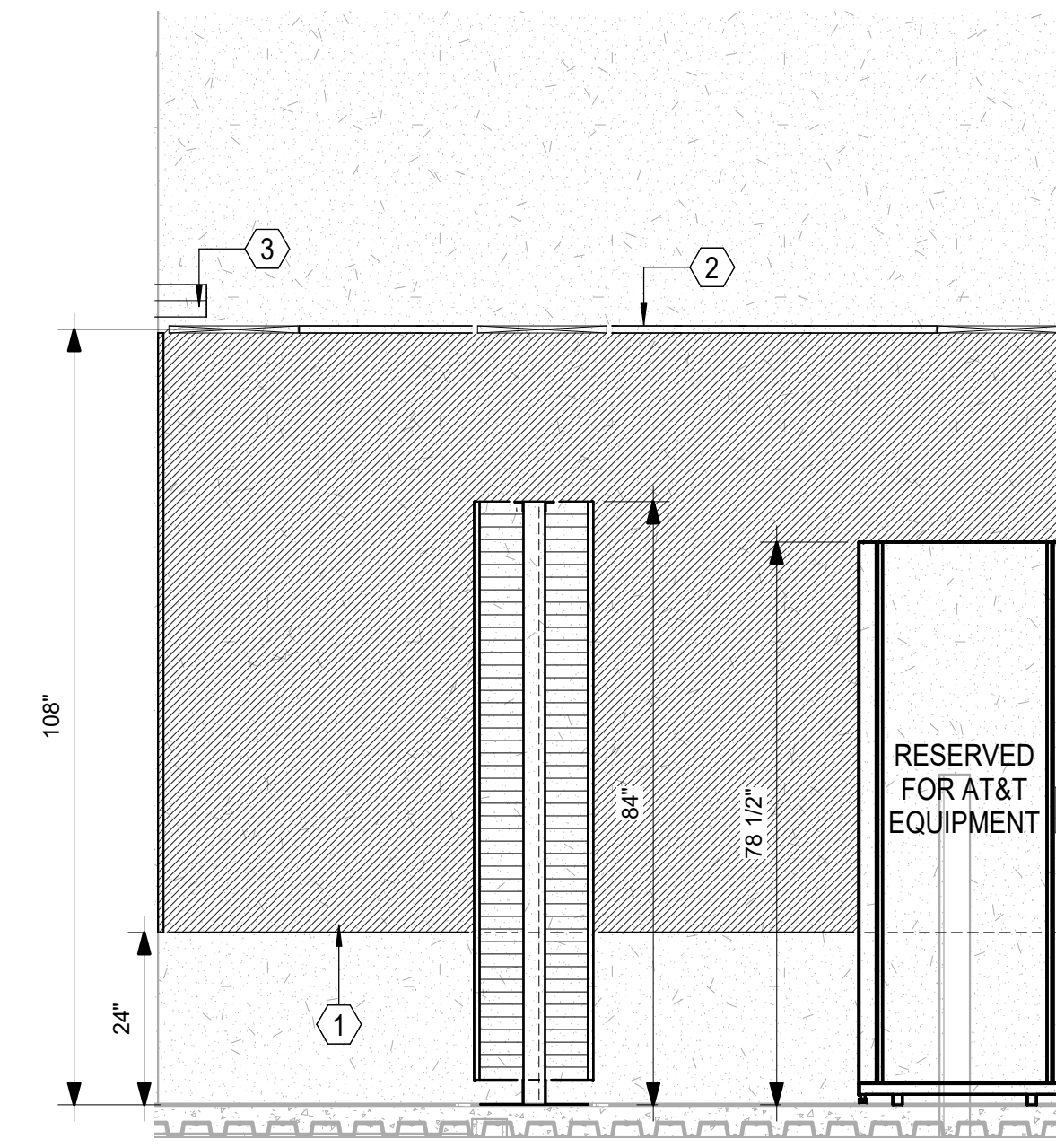
1 T-402 911 EQUIPMENT ROOM - EAST ELEVATION 1/2" = 1'-0"

D



2 T-402 911 EQUIPMENT ROOM - NORTH ELEVATION 1/2" = 1'-0"

D

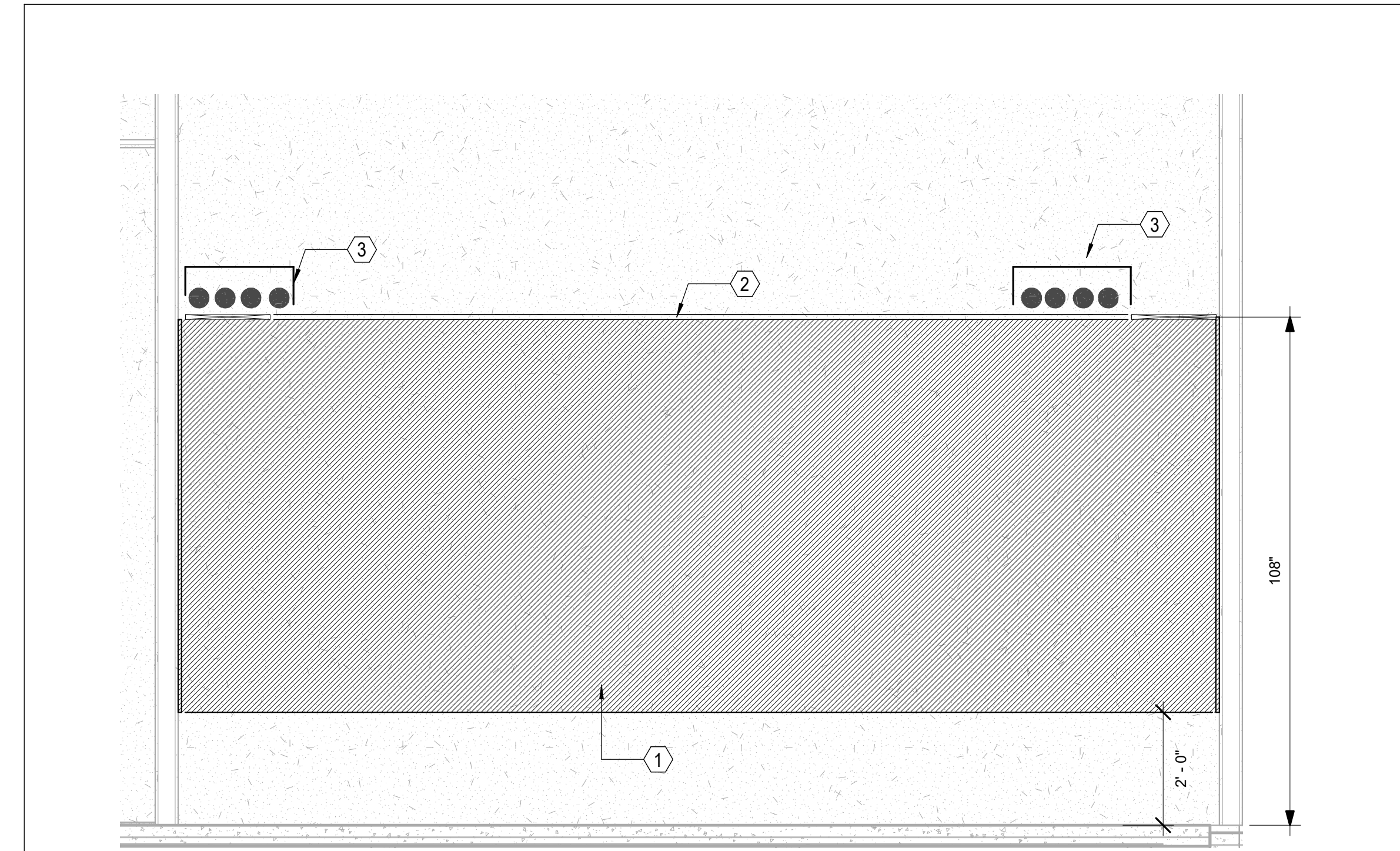


3 T-402 911 EQUIPMENT ROOM - WEST ELEVATION 1/2" = 1'-0"

KEYNOTES (THIS SHEET ONLY)

- 1 0.75" PLYWOOD BACKBOARD
2 18"W CABLE RUNWAY
3 (4) 4" FIRESTOPPED SLEEVES FOR HORIZONTAL DISTRIBUTION

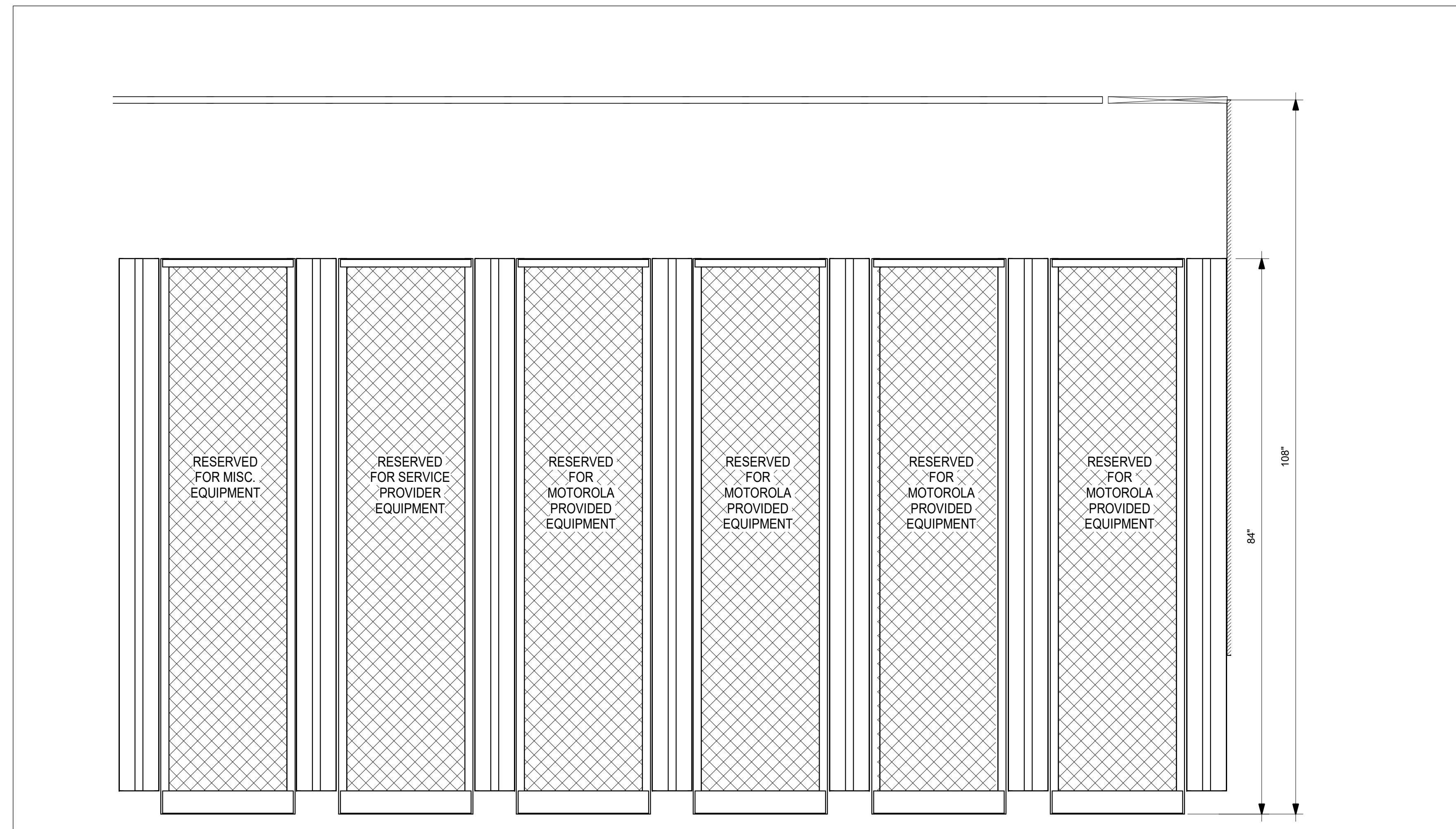
C



B

4 T-402 911 EQUIPMENT ROOM - SOUTH ELEVATION 1/2" = 1'-0"

A



5 T-402 911 EQUIPMENT ROOM - RACK ELEVATION 1" = 1'-0"



CAPE FEAR FD STONEWATER



101 NORTH THIRD STREET, SUITE 500
WILMINGTON, NORTH CAROLINA 28401
TEL. 910.790.3111 FAX. 910.790.9901
WWW.LS3P.COM

NOT FOR CONSTRUCTION

NHC Government Center 7702-190810

NEW HANOVER COUNTY
GOVERNMENT CENTER
GOVERNMENT CENTER DRIVE
WILMINGTON, NC 28403

LS3P PROJECT: 7702-190810

Table with columns for DATE and DESCRIPTION.

Newcomb & Boyd
CONSULTANTS AND ENGINEERS
Consulting Engineering Group
5425 Page Rd
Suite 215
Durham, NC 27703
T 919 783-7812
Contact: Paul J. Kitchens
N&B PROJECT: 19N342
Firm License No. F-0312

SHEET NAME:
TELECOM - 911
EQUIPMENT ROOM
ELEVATIONS

DATE:
CURRENT: 2020.11.20
TI GMP SET

SHEET:
T-402

TI GMP SET

11/19/2020 2:47:02 PM

1

2

3

4

5

6

GENERAL NOTES (THIS SHEET ONLY)

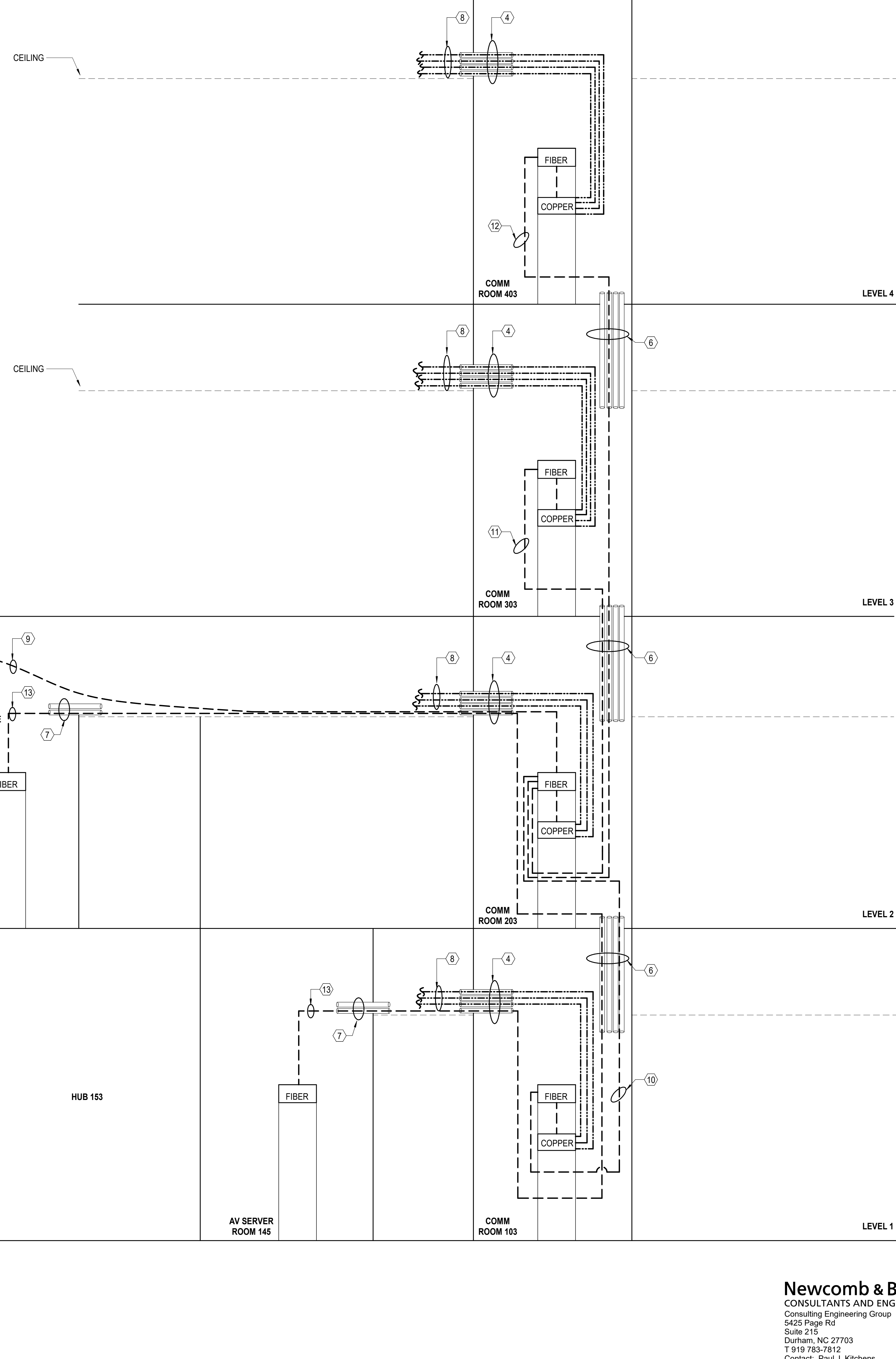
1. AT ALL VERTICAL SLEEVE LOCATIONS, FURNISH AND INSTALL 12"W CABLE RUNWAY MOUNTED VERTICALLY TO ALLOW FOR PROPER SUPPORT OF CABLES.

KEYNOTES (THIS SHEET ONLY)

- ① (6) 4" CONDUITS FOR SERVICE PROVIDER FIBER TO EXISTING MANHOLES. CONTRACTOR MUST VERIFY AND COORDINATE EXACT LOCATIONS. SEE TELECOM SITE PLAN FOR DETAILS.
- ② (2) 4" CONDUITS FOR FIBER REDUNDANCY FROM SERVER ROOM 206 TO TOWER AREA. CONTRACTOR MUST VERIFY AND COORDINATE EXACT LOCATION. SEE TELECOM SITE PLAN FOR DETAILS.
- ③ (6) 4" CONDUITS FROM SERVER ROOM 206 TO FLOOR BELOW FOR LEVEL 1 HORIZONTAL DISTRIBUTION CABLES VIA HVAC ROOM 109 CEILING TO BASKET TRAY IN CORRIDOR 178
- ④ (4) 4" FIRESTOPPED SLEEVES FOR HORIZONTAL DISTRIBUTION
- ⑤ (6) 4" FIRESTOPPED SLEEVES FOR HORIZONTAL DISTRIBUTION
- ⑥ (4) 4" FIRESTOPPED SLEEVES TO COMM ROOM ABOVE
- ⑦ AUDIOVISUAL FIRESTOPPED SLEEVES BY OTHERS. SEE AUDIOVISUAL DRAWINGS FOR DETAILS.
- ⑧ HORIZONTAL DISTRIBUTION CABLES (TYPICAL)
- ⑨ 72 STRAND SINGLEMODE FIBER FROM SERVER ROOM 206 TO COMM ROOM 203
- ⑩ 12 STRAND SINGLEMODE FIBER FROM COMM 203 TO FLOOR BELOW TO COMM 103.
- ⑪ 12 STRAND SINGLEMODE FIBER FROM COMM 203 TO FLOOR ABOVE TO COMM ROOM 303.
- ⑫ 12 STRAND SINGLEMODE FIBER FROM COMM 203 TO FLOOR ABOVE TO COMM ROOM 403.
- ⑬ 12 STRAND SINGLEMODE FIBER FROM AV ROOM SERVER ROOM 145 TO EOC/STORAGE ROOM 275. SEE AV DRAWINGS FOR DETAILS.
- ⑭ (8) 4" FIRESTOPPED SLEEVES FOR HORIZONTAL DISTRIBUTION FROM DEMARC ROOM 208 TO SERVER ROOM 206
- ⑮ TELEPHONE SERVICE PROVIDER CABLING. COORDINATE WITH SERVICE PROVIDER AND OWNER.
- ⑯ SERVICE PROVIDER CABLING. COORDINATE WITH SERVICE PROVIDER AND BUILDING OWNER PRIOR TO ORDERING.

GOVERNMENT CENTER

ROOF



EOC 911 CENTER

EOC ROOF

SERVER ROOM 206

DEMARC COMM ROOM 208

TELEPHONE DEMARCATION

ELECTRICAL ROOM 207

EOC/STORAGE ROOM 275

FIBER

HUB 153

AV SERVER ROOM 145

COMM ROOM 103

COMM ROOM 203

COMM ROOM 303

COMM ROOM 403

LEVEL 2

LEVEL 3

LEVEL 4

LEVEL 1

LEVEL 2

LEVEL 1

E
D
C
B
A



101 NORTH THIRD STREET, SUITE 500
WILMINGTON, NORTH CAROLINA 28401
TEL. 910.790.3111 FAX. 910.790.9901
WWW.LS3P.COM

NOT FOR CONSTRUCTION

NHC Government Center 7702-190810

NEW HANOVER COUNTY
GOVERNMENT CENTER
GOVERNMENT CENTER DRIVE
WILMINGTON, NC 28403
LS3P PROJECT: 7702-190810

DATE	DESCRIPTION

SHEET NAME:
TELECOM RISER DIAGRAM

DATE:
CURRENT: **2020.11.20**
TI GMP SET

SHEET:
T-601

TI GMP SET

Newcomb & Boyd
CONSULTANTS AND ENGINEERS
Consulting Engineering Group
5425 Page Rd
Suite 215
Durham, NC 27703
T 919 783-7812
Contact: Paul J. Kitchens
N&B PROJECT: 19N342
Firm License No. F-0312