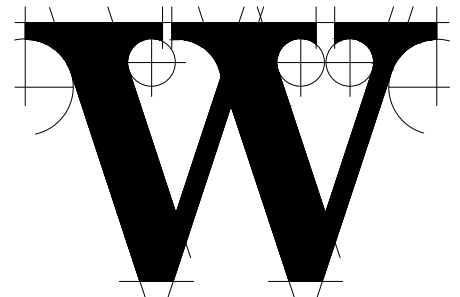




GFO Hangar
Wilmington International Airport
1740 Airport Boulevard
Wilmington, NC 28405



THE WILSON GROUP
- ARCHITECTS -

PO BOX 5510
CHARLOTTE, NC 28299
(704) 331-9747
www.twgarchitects.com
NC Cert. No. 51140

CIVIL ENGINEER
WK DICKSON
AN ARDURRA COMPANY
300 N. Third Street, Suite 301
Wilmington, NC 28401

STRUCTURAL ENGINEER
WOODS
ENGINEERING, PA
254 N. Front St., Suite 201
Wilmington, NC 28401

MECHANICAL, ELECTRICAL AND PLUMBING ENGINEER
CBHF
ENGINEERS, PLLC
2246 Yaupon Drive
Wilmington, NC 28401

GEOTECHNICAL ENGINEER
ENGINEERING
CONSULTING SERVICES
(ECS)
6714 Netherlands Drive
Wilmington, NC 28405

GENERAL CONTRACTOR
MONTEITH
CONSTRUCTION
206 Princess Street
Wilmington, NC 28401

COPYRIGHT © 2024
THE WILSON GROUP ARCHITECTS
ALL RIGHTS RESERVED

PRINTED OR ELECTRONIC DRAWINGS AND DOCUMENTATION MAY NOT BE REPRODUCED IN ANY FORM WITHOUT WRITTEN PERMISSION FROM THE WILSON GROUP ARCHITECTS

REVISIONS

DATE 12/04/2024
PROJECT NUMBER 20240591.00.WK
SHEET TITLE

GRADE
COMPARISON
FIGURE

SHEET NUMBER

FIG 1

NOTES:

- ELEVATIONS IN THE TABLE GREATER THAN 0 INDICATE THE DEPTH OF FILL. ELEVATION LESS THAN 0 INDICATE THE DEPTH OF CUT. AN ELEVATION OF 0 INDICATES EXISTING GRADES EQUAL TO THAT OF THE PROPOSED GRADES.
- PER THE GEOTECH REPORT, THE CUT AND FILL VOLUMES ARE BASED ON THE ASSUMPTION THAT THE TOP 4 INCHES OF TOPSOIL WITHIN THE GRADING LIMITS WILL BE STRIPPED.
- THE CUT AND FILL VOLUMES ARE BASED ON THE PAVEMENTS AND TOPSOIL SUBGRADES, AND THE VOLUMES ASSOCIATED WITH THE PAVEMENT SECTION (INCLUDING BASE COURSE AND ASPHALT/CONCRETE LAYERS) ARE NOT INCLUDED IN THESE CALCULATIONS.
- EARTHWORK QUANTITIES SHOWN ARE APPROXIMATE AND ARE BASED ON THE PROPOSED GRADING PLAN. THESE CALCULATIONS DO NOT ACCOUNT FOR VOLUMES ASSOCIATED WITH THE CONCRETE CURBS AND GUTTER, MOW STRIPS, UNDERCUT FOR UNSUITABLE SOILS, SLAB THICKENED EDGES, COLUMN FOOTINGS OR UTILITY TRENCHES. ADDITIONALLY EXCAVATION OR BACKFILL REQUIRED FOR STORMWATER MANAGEMENT FEATURES, RETAINING WALL STRUCTURES, OR ANY NON-GRADING-RELATED SITE ELEMENTS HAS NOT BEEN INCLUDED.
- ALL QUANTITIES ARE FOR REFERENCE ONLY AND MAY VARY DEPENDING ON FIELD CONDITIONS, ACTUAL CONSTRUCTION METHODS, AND MATERIAL SHRINKAGE OR SWELL.

SURVEY REFERENCES:

- TOPOGRAPHIC DATA WITHIN THE SURVEY BOUNDARY WAS OBTAINED FROM STEWART, P.L.C. SURVEY DATED MAY 2024. SURVEY SIGNED AND SEALED BY DURWARD S. LEGGETT, LICENSE # L-5085.
- TOPOGRAPHIC DATA OUTSIDE THE SURVEY BOUNDARY FROM HISTORIC DRAWINGS BY TALBERT AND BRIGHT DATED JULY 18, 2018. J M SMITH ENGINEERING DATED SEPTEMBER 14, 2020 AND FROM AERIAL LIDAR DATA AND IMAGERY. THIS DATA IS PROVIDED FOR REFERENCE ONLY AND IS APPROXIMATE.

Elevations Table			
Number	Minimum Elevation	Maximum Elevation	Color
1	-1.965	-1.000	Red
2	-1.000	0.000	Orange
3	0.000	1.000	Yellow
4	1.000	2.000	Light Green
5	2.000	3.000	Green
6	3.000	3.919	Dark Green

PAVEMENT SECTIONS			
DESCRIPTION	PAV. THICKNESS (IN.)	BASE LAYER THICKNESS (IN.)	PAV. SECTION TOTAL (IN.)
SOG-12	12	6	18
SOG-8	8	6	14
SOG-4	4	6	10
STD. DUTY ASPHALT	2	6	8
CONC. APRON	9.5	6	15.5
CONC. SIDEWALK	4	0	4

EARTHWORK QUANTITIES	
CUT VOLUME (CY)	324.45
FILL VOLUME (CY)	1846.62
NET FILL (CY)	1522.17

*APPROXIMATELY 756 CY OF TOPSOIL STRIPPING WITHIN THE LIMITS OF GRADING (SEE NOTES 2 & 3).

